



38 The Pavilion St. Stephens Road, Norwich

Guide Price £130,000 - £150,000

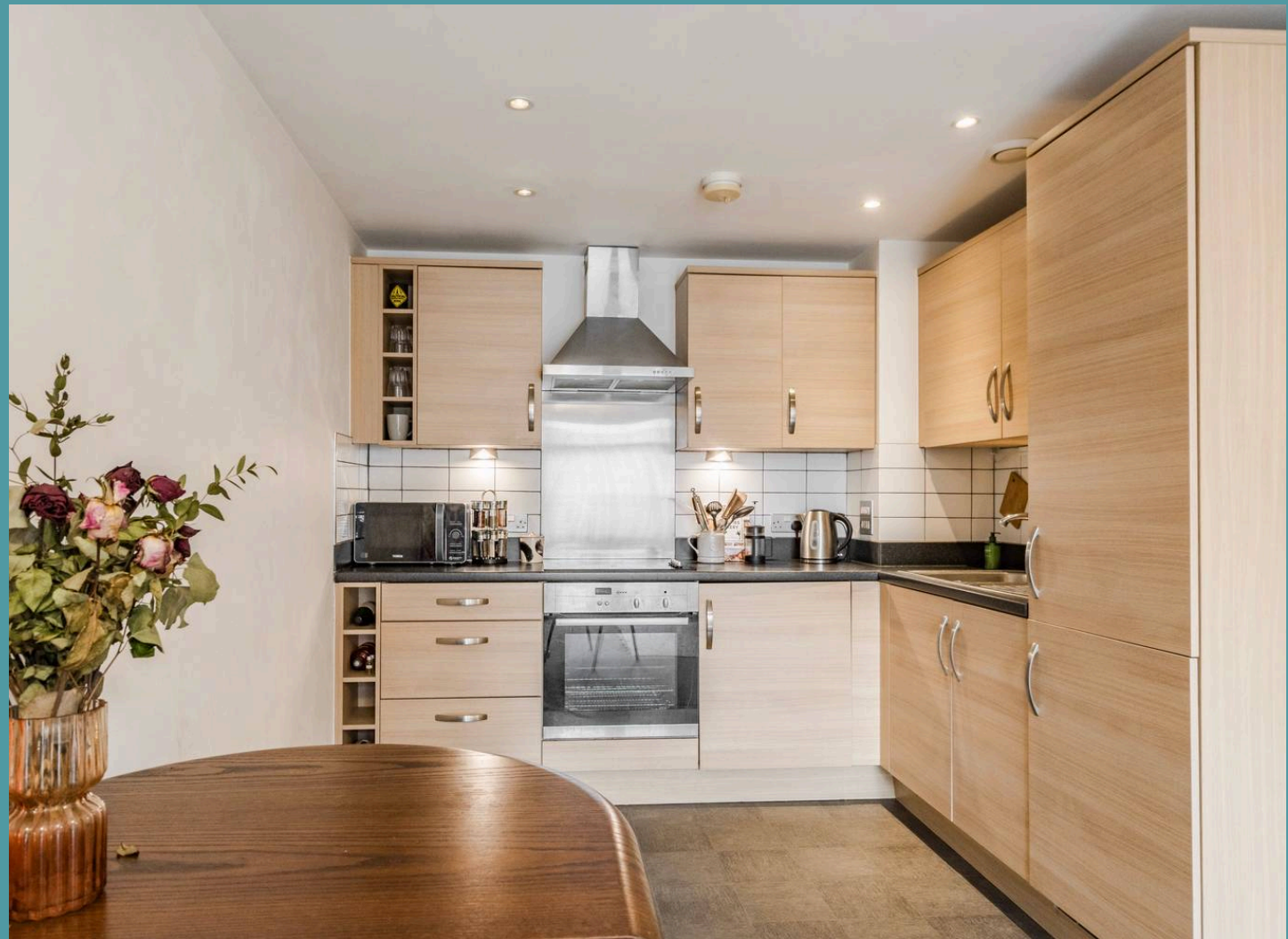
38 The Pavilion St. Stephens Road

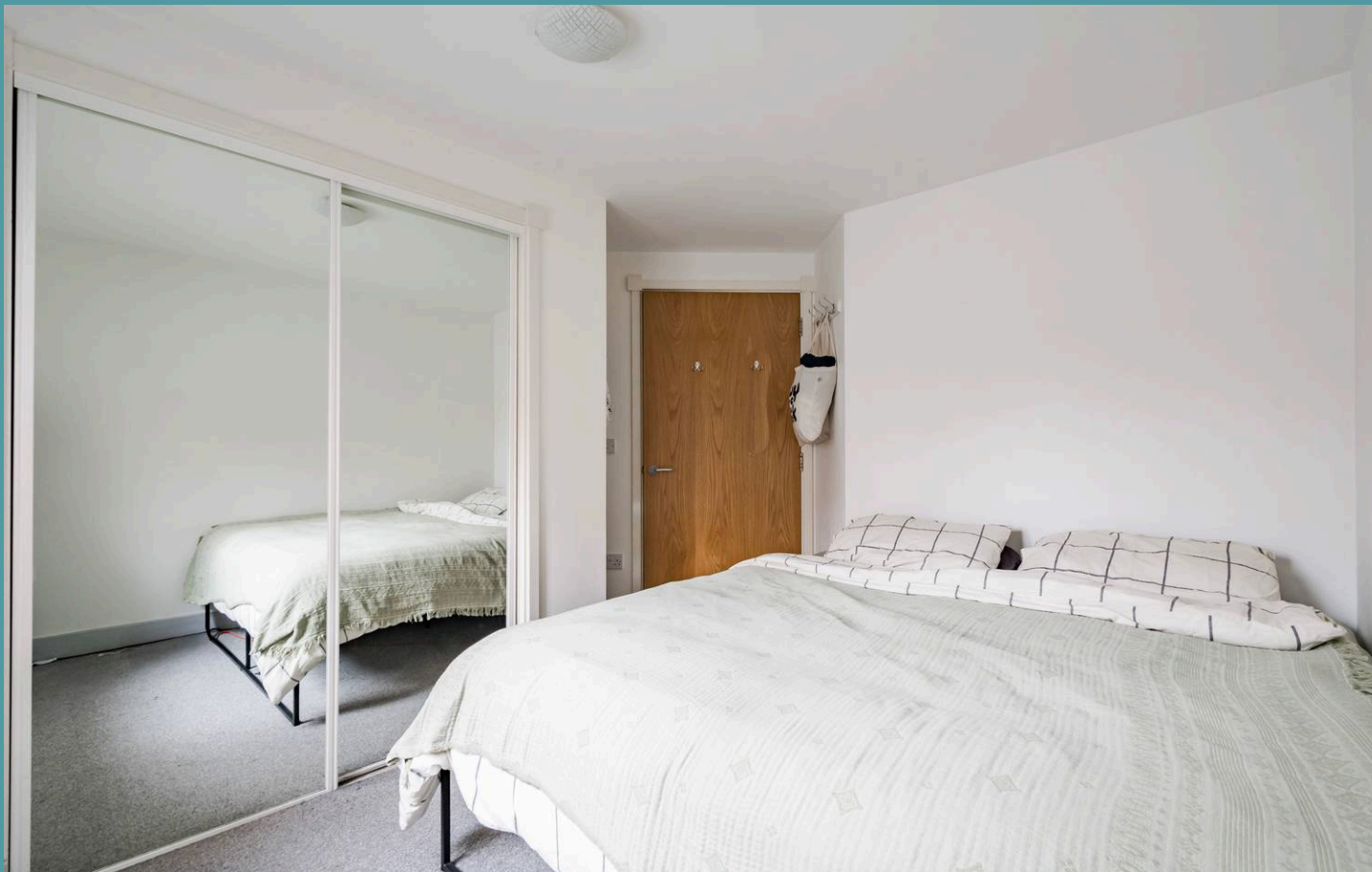
Norwich

Set within the heart of the vibrant city of Norwich, lies this one-bedroom flat that offers a modern and convenient lifestyle. Perfectly suited to first time buyers or investors, this flat showcases an open-plan kitchen/dining/living room, a double bedroom and a contemporary bathroom suite. Its prime positioned is just moments away from a plethora of amenities, including shopping centres, transport links, education and healthcare facilities. Don't miss out on the chance to make this property your own and experience the best of city living in Norwich.

Location

Located in the heart of Norwich, the NR1 postcode area offers a vibrant mix of historic charm and modern convenience. Home to the iconic Norwich Cathedral and just a short walk from the lively Riverside entertainment complex, NR1 blends cultural heritage with contemporary living. The area boasts excellent transport links, including Norwich Train Station and major road access, making it ideal for commuters and visitors alike. With an array of shops, cafes, restaurants, and scenic spots along the River Wensum, NR1 is a dynamic and desirable location for residents, businesses, and tourists.





38 The Pavilion St. Stephens Road

Norwich

Upon entering this flat, you are immediately drawn to the bright and airy interior, which sets the tone for the rest of the home. The open-plan kitchen/dining/living area is thoughtfully designed to maximise space and natural light, creating a welcoming environment for both relaxation and entertainment. The kitchen is equipped with quality fixtures and fittings, ensuring a seamless cooking experience. The double bedroom is thoughtfully designed to offer the utmost comfort and privacy, complemented by a built-in wardrobe for your personal belongings. The bathroom comprises of a contemporary three piece suite, adding a luxury touch to your everyday routine.

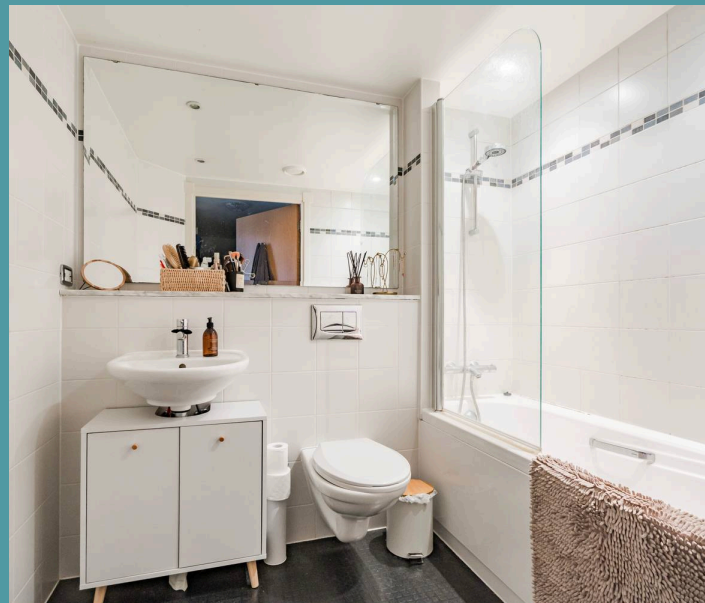
Agents notes

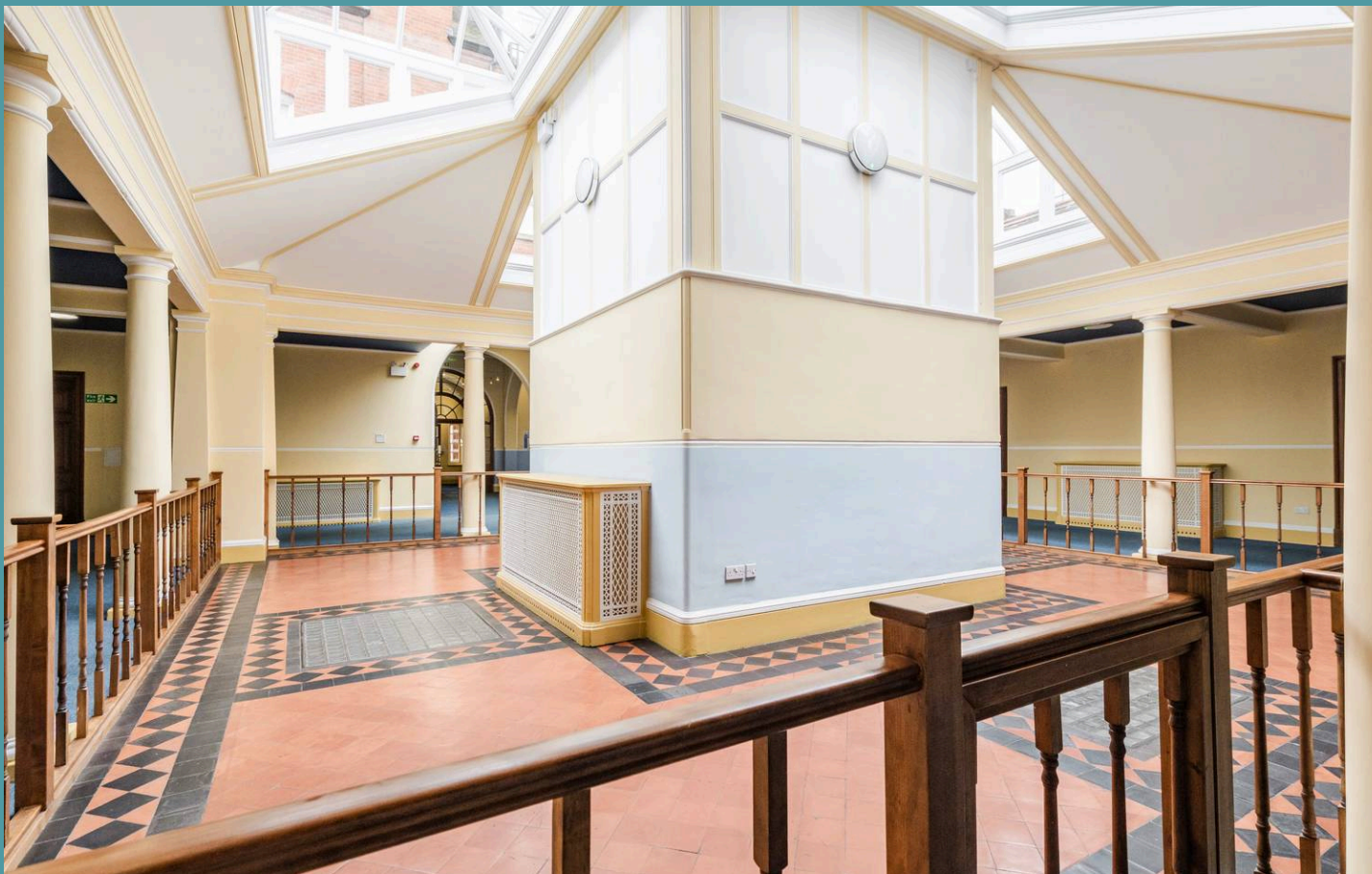
Leasehold, with 100 years left on the lease.

Ground rent - £300p/a.

Maintenance fee - £1,800 (for 2023/24).

Allocated parking.

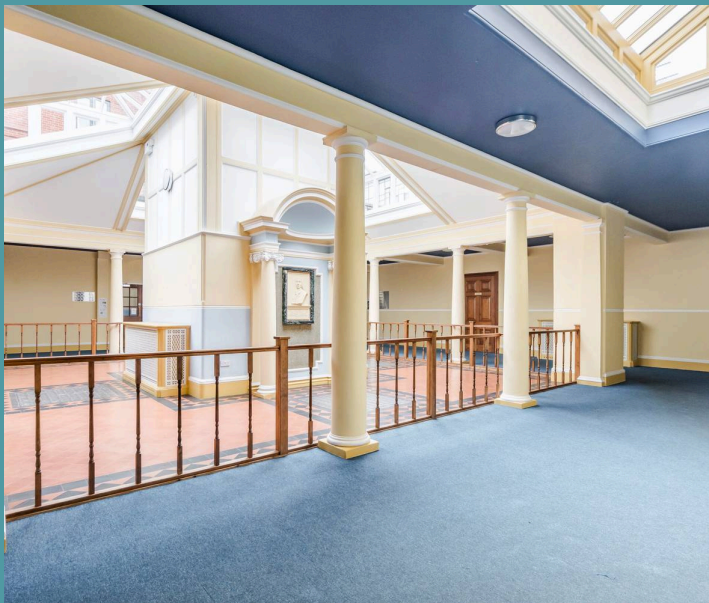




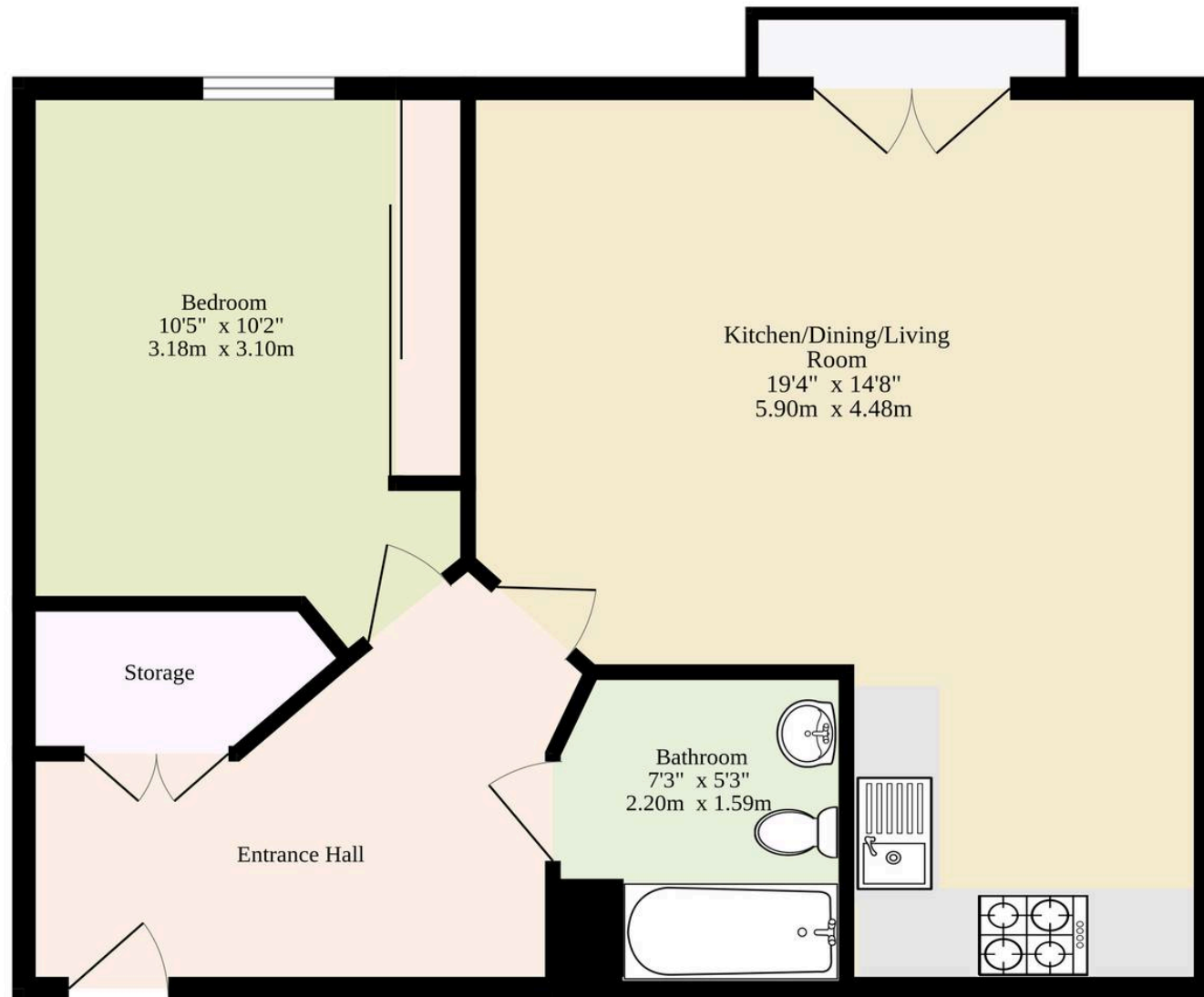
38 The Pavilion St. Stephens Road

Norwich

- One-bedroom flat in the city centre of Norwich
- Moments away from a wide range of amenities, including shopping centres, transport links, education and healthcare facilities
- Perfect for first time buyers or investors
- Bright and airy interior
- Open-plan kitchen/dining/living area equipped with quality fixtures and fittings to elevate your cooking experience
- A double bedroom with a built-in wardrobe
- Bathroom with a contemporary three piece suite
- Off-road parking available



Ground Floor
488 sq.ft. (45.3 sq.m.) approx.



TOTAL FLOOR AREA : 488 sq.ft. (45.3 sq.m.) approx.

Whilst every attempt has been made to ensure the accuracy of the floorplan contained here, measurements of doors, windows, rooms and any other items are approximate and no responsibility is taken for any error, omission or mis-statement. This plan is for illustrative purposes only and should be used as such by any prospective purchaser. The services, systems and appliances shown have not been tested and no guarantee as to their operability or efficiency can be given.
Made with Metropix ©2025