

87 Mill Hill Road, Norwich

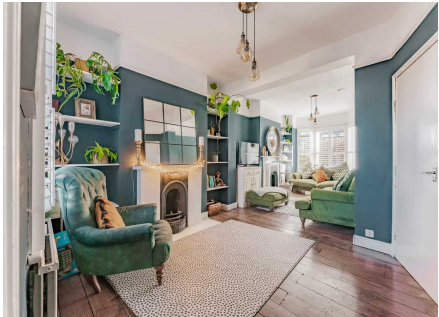
£460,000 Freehold

Guide £460,000-£480,000 - Discover timeless elegance in this exceptional property on Mill Hill Road, where character-filled spaces unfold through an inviting entrance hallway. The living room, adorned with original fireplaces and bay windows, offers a perfect space to unwind. With a stunning basement kitchen, generously sized bedrooms, a skylight retreat and a charming courtyard-style area at the rear, this home seamlessly blends style and practicality. Convenient on-road parking with permits adds the finishing touch to this unique residence, creating a well-rounded haven for both relaxation and modern living.

Discover timeless elegance in this exceptional property on Mill Hill Road, where character-filled spaces unfold through an inviting entrance hallway. The living room, adorned with original fireplaces and bay windows, offers a perfect space to unwind. With a stunning basement kitchen, generously sized bedrooms, a skylight retreat and a charming courtyard-style area at the rear, this home seamlessly blends style and practicality. Convenient on-road parking with permits adds the finishing touch to this unique residence, creating a well-rounded haven for both relaxation and modern living.

LOCATION

Nestled in the vibrant heart of Norwich, Mill Hill Road, NR2, enjoys a prime location within the coveted Golden Triangle. Within walking distance to the city centre, this residence offers easy access to essential amenities, providing a seamless blend of urban living and convenience. Local pubs, including the Georgian Townhouse and the enchanting Plantation Gardens, offer delightful options for leisurely strolls and scenic views. Residents can also take



Discover timeless elegance in this exceptional property on Mill Hill Road, where character-filled spaces unfold through an inviting entrance hallway. The living room, adorned with original fireplaces and bay windows, offers a perfect space to unwind. With a stunning basement kitchen, generously sized bedrooms, a skylight retreat and a charming courtyard-style area at the rear, this home seamlessly blends style and practicality. Convenient on-road parking with permits adds the finishing touch to this unique residence, creating a well-rounded haven for both



Discover timeless elegance in this exceptional property on Mill Hill Road, where character-filled spaces unfold through an inviting entrance hallway. The living room, adorned with original fireplaces and bay windows, offers a perfect space to unwind. With a stunning basement kitchen, generously sized bedrooms, a skylight retreat and a charming courtyard-style area at the rear, this home seamlessly blends style and practicality. Convenient on-road parking with permits adds the finishing touch to this unique residence, creating a well-rounded haven for both relaxation and modern living.

LOCATION

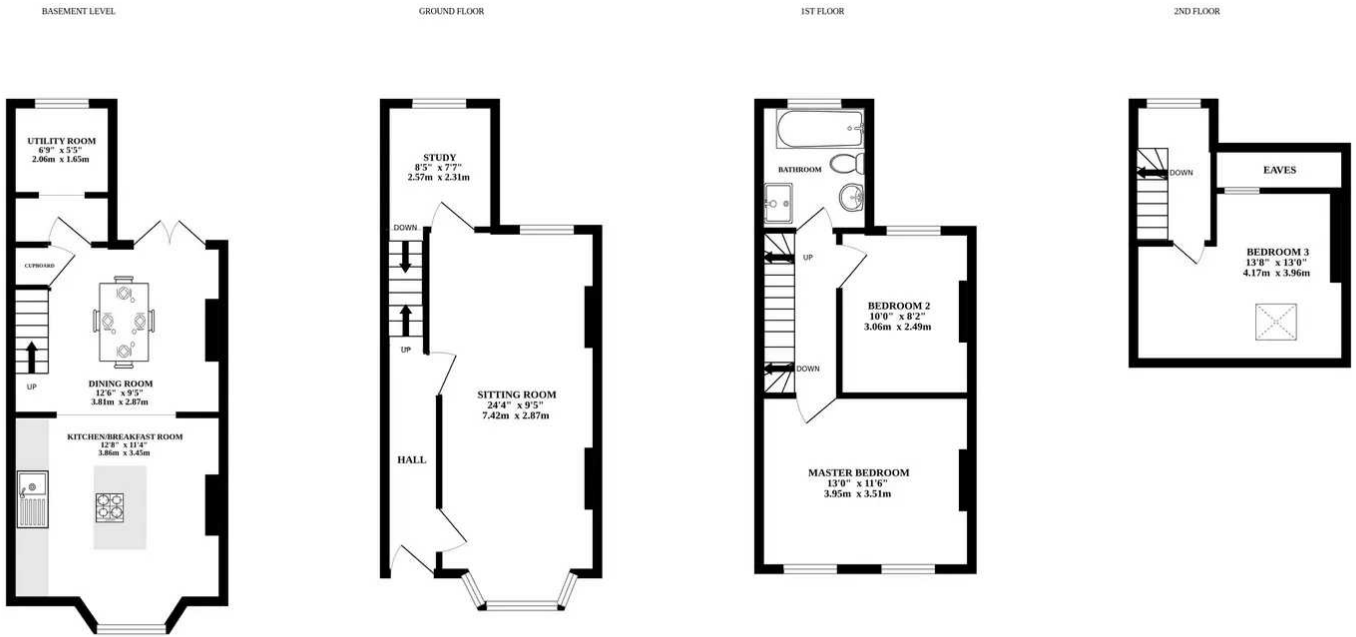
Nestled in the vibrant heart of Norwich, Mill Hill Road, NR2, enjoys a prime location within the coveted Golden Triangle. Within walking distance to the city centre, this residence offers easy access to essential amenities, providing a seamless blend of urban living and convenience. Local pubs, including the Georgian Townhouse and the enchanting Plantation Gardens, offer delightful options for leisurely strolls and scenic views. Residents can also take advantage of regular bus links and a nearby bus station for effortless commuting to destinations such as Cambridge and London, while local shops cater to daily needs, ensuring a well-rounded and dynamic living experience.

THE PROPERTY

Step into timeless elegance with this exceptional property at Mill Hill Road, offering a captivating entrance hallway that sets the tone for the character-filled spaces within. The living room, adorned with original feature fireplaces, provides ample space for your preferred furniture arrangements and is a perfect haven to unwind, complemented by bay windows that infuse the space with natural light. This floor also features a dedicated study area for those who work from home, offering a balance of productivity and relaxation.

Access to both upper floors and the basement level is granted from this floor, leading down to a stunning kitchen area in the basement. Bright cupboards, bay windows and a luxury island with an integrated induction hob define this culinary space. A dining area with French doors to the rear and access to a utility/cloakroom complete the practical and stylish layout. The first floor introduces two out of three generously sized bedrooms, boasting built-in storage, space for a large bed, and original feature fireplaces. The second bedroom, equally spacious, offers versatility for guests or children. This floor is completed by a modern bathroom featuring a free-standing bath, shower and stylish floor tiling. Ascending to the final floor reveals another generously sized room with a skylight, offering a versatile space for accommodating additional guests or creating a personalised retreat.





Whilst every attempt has been made to ensure the accuracy of the floorplan contained here, measurements of doors, windows, rooms and any other items are approximate and no responsibility is taken for any error, omission or mis-statement. This plan is for illustrative purposes only and should be used as such by any prospective purchaser. The services, systems and appliances shown have not been tested and no guarantee as to their operability or efficiency can be given.
Made with Metropix ©2024

You can include any text here. The text can be modified upon generating your brochure.

You can include any text here. The text can be modified upon generating your brochure.

