



## 19 Broad Fleet Close, Oulton

In Excess of £290,000

# 19 Broad Fleet Close

Oulton, Lowestoft

Welcome to this three-storey home, offering a comfortable and convenient living space for its occupants. Located in the wonderful area of Oulton, in close proximity to all local amenities and natural surroundings. Its spacious accommodation consists of a kitchen, sitting room, bathroom and four bedrooms, one with an ensuite. Externally you will find driveway, garage and well maintained garden.

## AGENTS NOTES

We understand that this property is freehold.

This property is being sold fully furnished.





## 19 Broad Fleet Close

Oulton, Lowestoft

Upon arrival to this three-storey family home, is a driveway providing off-road parking for all family members and visitors. Whilst the garage offers additional parking or extra storage space.

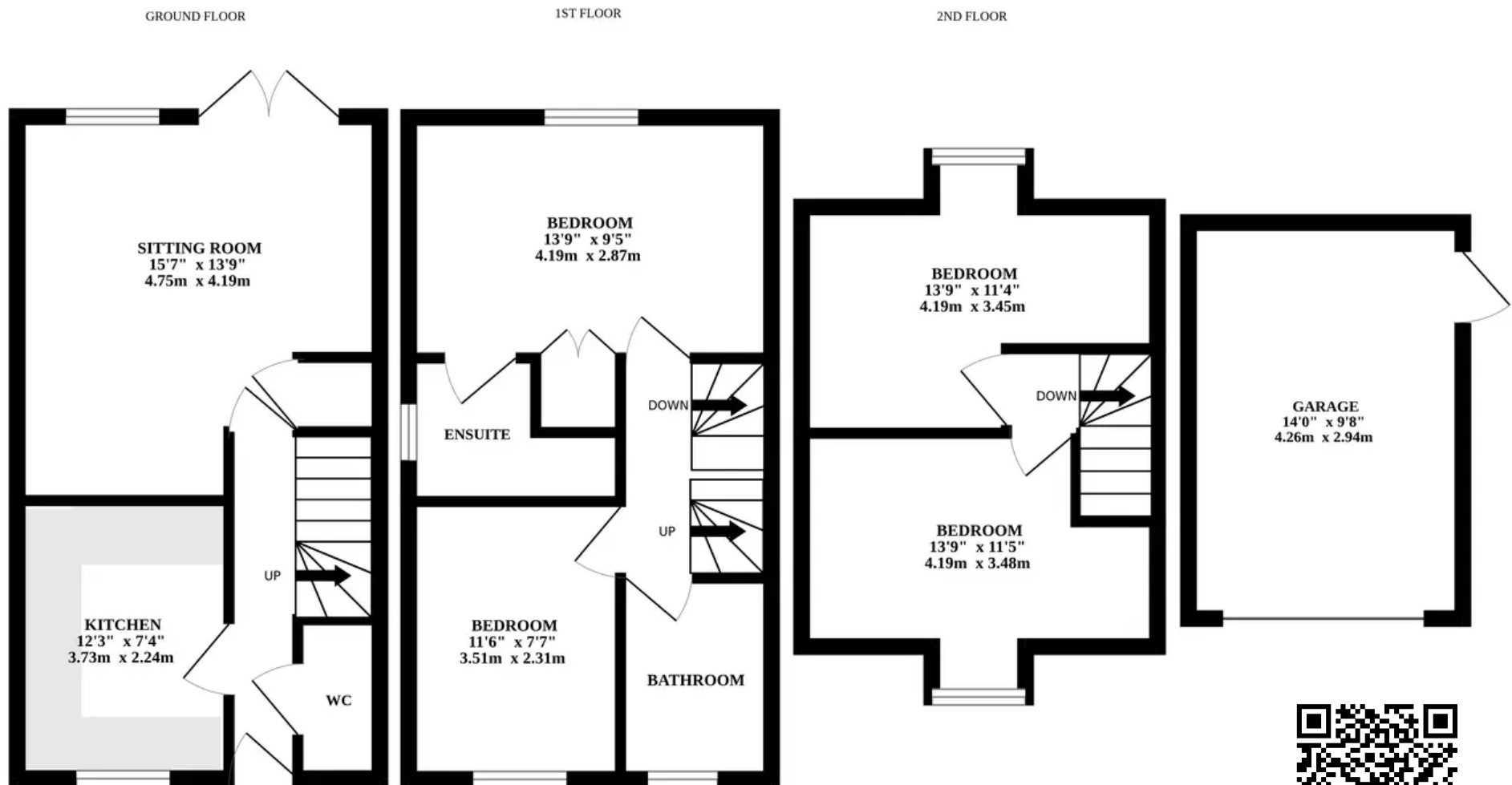
Step inside where you are instantly greeted by a welcoming entrance hall, complete with a convenient WC. Located at the front of the property is a well-equipped kitchen, fitted with units and appliances to enhance your cooking experience. Offering plenty of storage space and designated areas for your laundry goods. The sitting room is where you can showcase your comfortable furniture and dining set-up, perfect for gathering with friends and family.

Heading upstairs you will find two double bedrooms, designed to offer you relaxation and privacy. The master bedroom is complemented by its own ensuite and built in wardrobes. The bathroom comprises of a three piece suite, accommodating all family members and guests. The second floor has an additional two bedrooms, that has the versatility to be an at home office or spare bedroom.

Towards the rear is a well maintained garden, consisting of a laid to lawn and patio area, suitable for outdoor furniture during the summer months. Overall this garden is fully enclosed so you can enjoy in seclusion.



- THREE STOREY FAMILY HOME
- NO ONWARD CHAIN
- SOLD FULLY FURNISHED



Whilst every attempt has been made to ensure the accuracy of the floorplan contained here, measurements of doors, windows, rooms and any other items are approximate and no responsibility is taken for any error, omission or mis-statement. This plan is for illustrative purposes only and should be used as such by any prospective purchaser. The services, systems and appliances shown have not been tested and no guarantee as to their operability or efficiency can be given.

Made with Metropix ©2023

