



19 Edgerton Road, Lowestoft

In Excess of £260,000

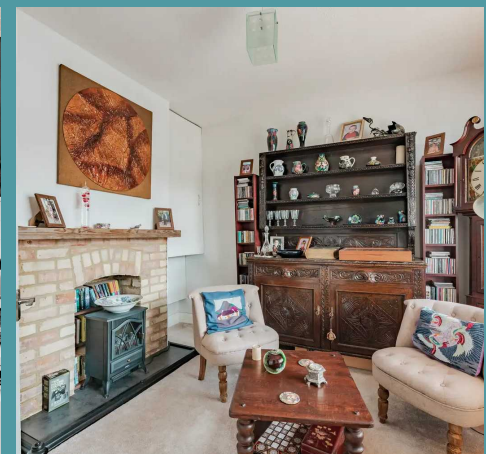
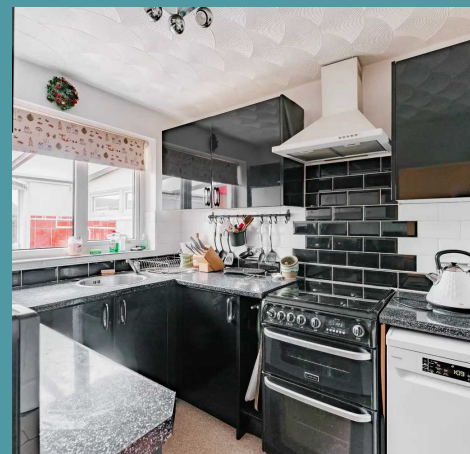
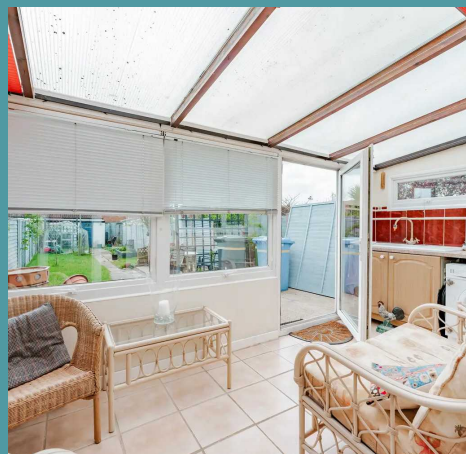
19 Edgerton Road

Lowestoft

Presenting this three bedroom semi-detached home, offering an excellent opportunity for those seeking a home that seamlessly combines comfort with practicality. Sitting in the wonderful area of Kirkley, within the seaside town of Lowestoft, in close proximity to all local amenities and natural surroundings. Its accomodation consists of a versatile sitting room, an open plan reception room, a conservatory, kitchen, bathroom and three bedrooms, one of which benefits from a private ensuite. Externally, you will find an extensive garden, a garage and off-road parking available.

LOCATION

This home is located on the most easterly point of the British Isles, in the traditional seaside town of Lowestoft. This wonderful seaside destination is steeped in history and offers a delightful blend of coastal allure and urban convenience. With its Blue Flag award-winning sandy beaches, Victorian seafront gardens and two charming piers, residents are treated to strolls along the shore and tranquil moments amidst nature's beauty. There are a number of schools in the area to suit all ages, a range of amenities including a Post Office, Bus Station and Train Station, which both run regular services to Norwich and plenty of shopping facilities and restaurants.





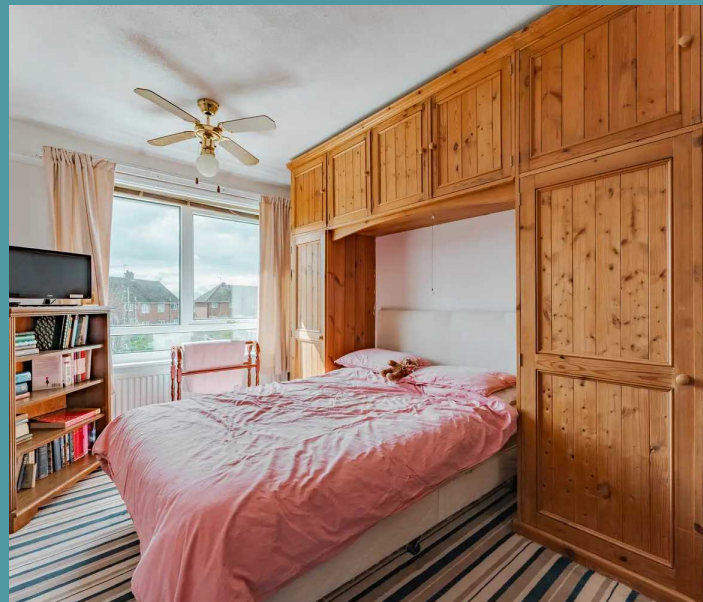
19 Edgerton Road

Lowestoft

Upon arrival to this semi-detached home, is a shingled driveway providing off-road parking for one vehicle, with a side gate to the rear garden.

Step inside where you are instantly greeted by a welcoming entrance hall. Positioned at the front of the property is a versatile sitting room, that has the option to be a snug or office, if you are looking to work from home. At the heart of the home lies an open plan reception room, where you can showcase your most comfortable furniture and dining set-up, encouraging gatherings with loved ones. With the presence of a conservatory, for your additional seating arrangements, allowing you to enjoy the outdoors within the comfort of your own home. The kitchen is fitted with units and appliances to be able to cook your favourite meals. Offering plenty of storage space and under-counter areas for your laundry goods. The ground floor bathroom comprises of a three piece suite, accommodating all family members and guests.

Heading upstairs you will find three bedrooms, designed to offer you relaxation and privacy. One of which flaunts a private ensuite bathroom, for added convenience. The third bedroom can be versatile, with potential to be a office, dressing room or spare bedroom.





19 Edgerton Road

Lowestoft

Towards the rear is an extensive garden, holding plenty of potential to meet your own requirements. Consisting of a laid to lawn and patio/decked terrace suitable for your outdoor furniture during the summer months. With ample amount of space for your wooden storage shed or a greenhouse. Located at the end of the garden is a garage/workshop, with additional off-road parking. Overall, this garden is fully enclosed so you can enjoy in seclusion.

In conclusion, this 3-bedroom semi-detached house presents a rare opportunity to own a well-appointed residence that exudes both charm and functionality. With its practical layout, desirable features, and prime location, this property is sure to attract those looking for a comfortable and convenient home for themselves and their families.

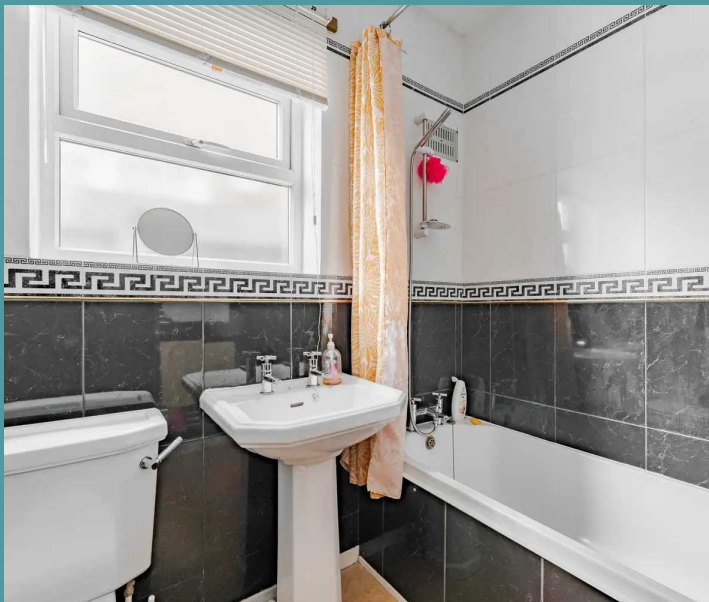
AGENTS NOTES

We understand that this property is freehold. Connected to mains water, electricity, gas and drainage.

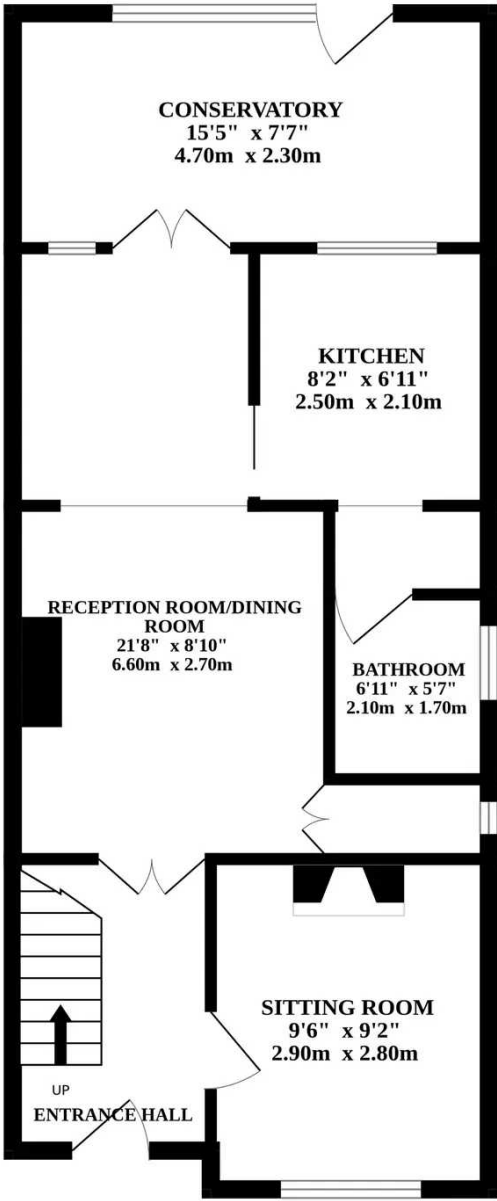
Heating system - Gas Fired Central Heating

Council Tax Band: B

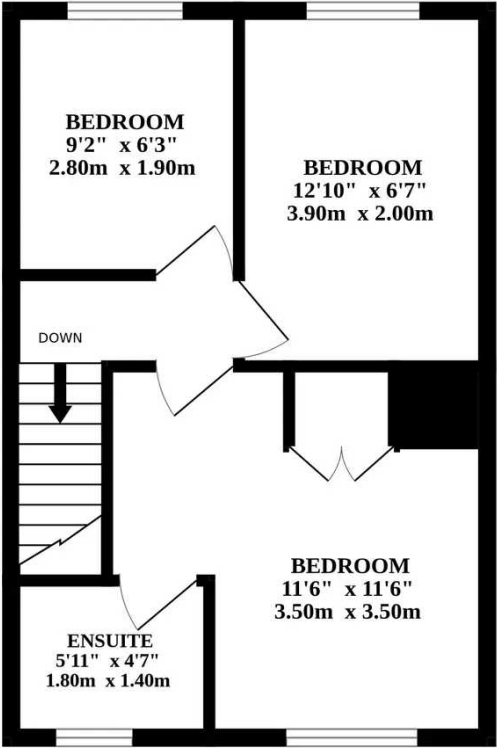
This property holds a restrictive covenant of not allowing pigs on the premises.



GROUND FLOOR



1ST FLOOR



Whilst every attempt has been made to ensure the accuracy of the floorplan contained here, measurements of doors, windows, rooms and any other items are approximate and no responsibility is taken for any error, omission or mis-statement. This plan is for illustrative purposes only and should be used as such by any prospective purchaser. The services, systems and appliances shown have not been tested and no guarantee as to their operability or efficiency can be given.
Made with Metropix ©2024