

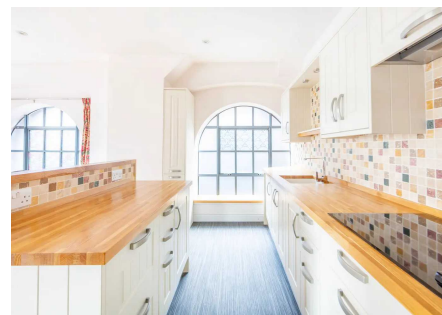
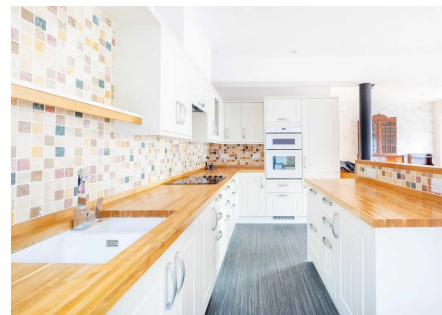
## 1 Needham Place St. Stephens Square, Norwich

Guide Price £290,000 - £300,000 Leasehold

Chain free! A stunning two bedroom apartment in the heart of the city centre with allocated parking. A rare chance to acquire a well-presented, two bedroom apartment in a highly desirable block with its own roof terrace. Boasting unique arched windows, an open plan reception room, ensuite to master and access onto the roof terrace. Not to be missed!



Nestled within the heart of Norwich, Needham Place at St. Stephens Square offers a prime city living experience. Situated in the vibrant NR1 postcode, this address provides convenient access to the city's bustling amenities and cultural attractions. The surrounding area boasts historic charm, with picturesque squares and architecture lining the streets. Residents can enjoy a diverse range of shops, restaurants, and entertainment options within walking distance. Whether strolling along the riverside or exploring the nearby parks, living in this central location offers the perfect blend of city living and leisure.

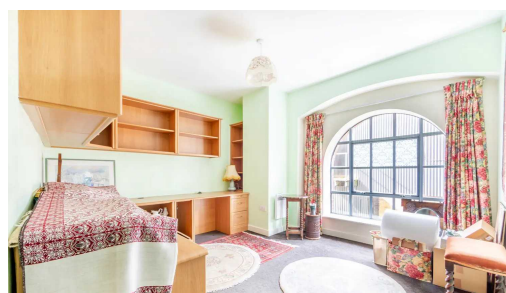


### AGENTS NOTE

We understand the property will be sold leasehold with 107 years remaining on the lease and connected to mains water, mains electricity and mains drainage.

Maintenance fee - £3,573 P/A.

Council tax band - C.



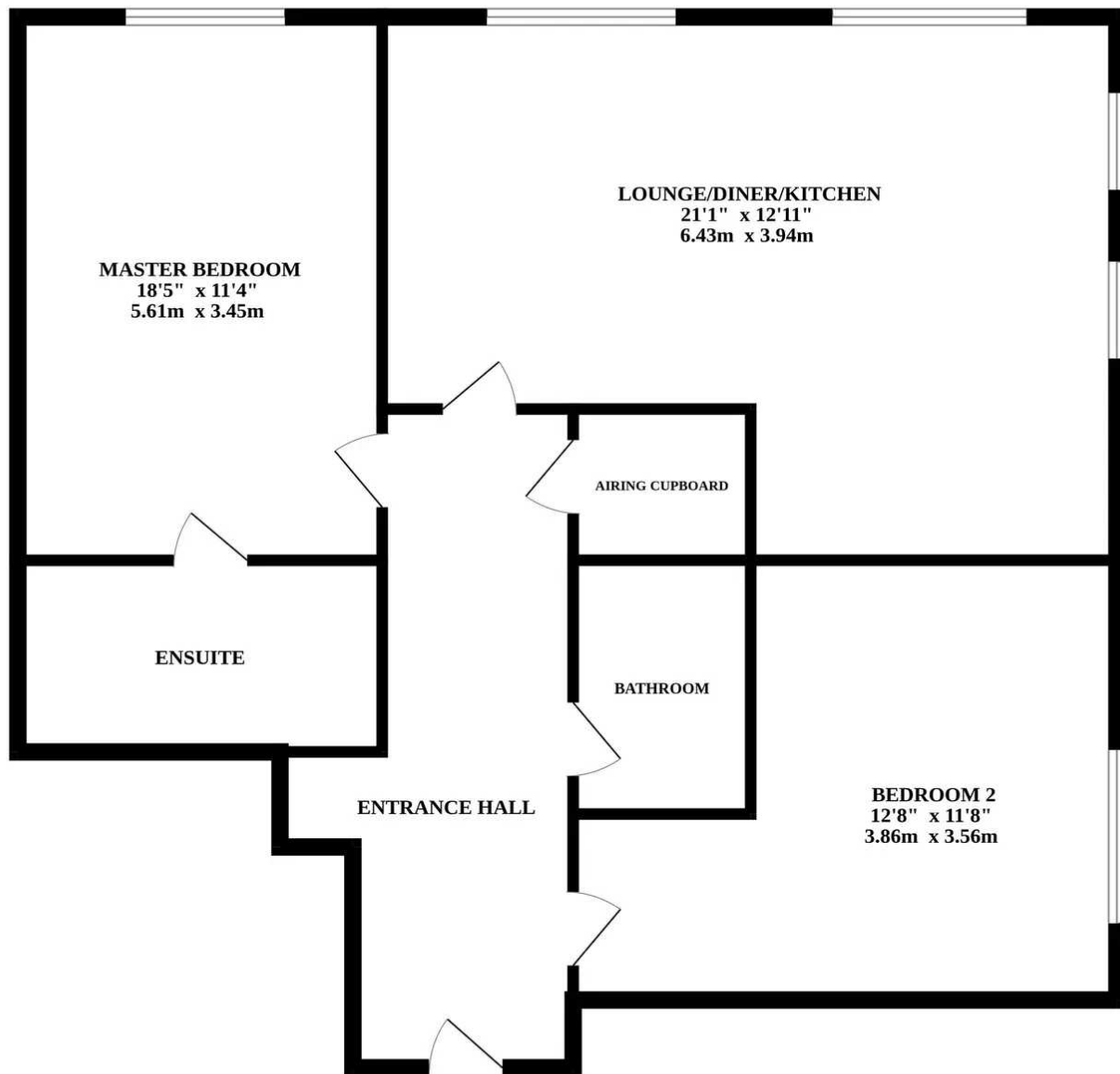


Presenting a remarkable two bedroom flat nestled in the heart of the prime city centre location, this immaculate property offers unparalleled city living. Boasting a contemporary design with a touch of sophistication, the apartment features an ensuite to the master bedroom and an additional sizeable bedroom, providing ample space for living and entertaining. The unique arched windows flood the interior with natural light, creating a bright and airy ambience throughout. The modern kitchen comes fully equipped with integrated appliances, making meal preparation a breeze and opens up to the living area. A second bathroom boasts a three piece suite with a shower over the bath and a heated towel rail.

Enjoy the luxury of a roof terrace perfect for unwinding after a long day. The property comes chain-free, allowing for a seamless transaction. Furthermore, residents will appreciate the convenience of lift access and the added perk of having an allocated parking space for hassle-free parking, a rare find in such a central location.

This property beautifully combines style, comfort, and functionality, offering a truly exceptional city living experience.





Whilst every attempt has been made to ensure the accuracy of the floorplan contained here, measurements of doors, windows, rooms and any other items are approximate and no responsibility is taken for any error, omission or mis-statement. This plan is for illustrative purposes only and should be used as such by any prospective purchaser. The services, systems and appliances shown have not been tested and no guarantee as to their operability or efficiency can be given.  
Made with Metropix ©2024

