



Three Jays Norwich Road, Ludham

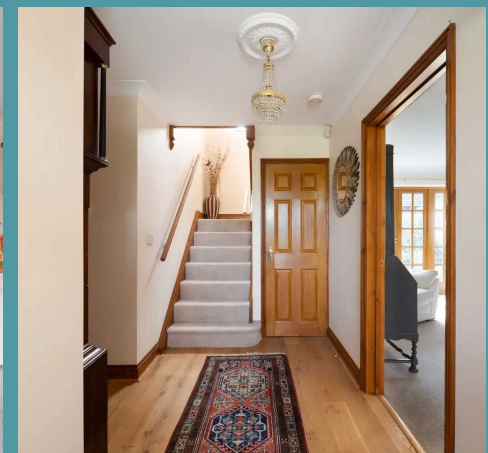
Three Jays Norwich Road

Ludham, Great Yarmouth

Welcome to this remarkable detached residence, a perfect family home that effortlessly accommodates a busy lifestyle with its convenient layout and tranquil surroundings. Situated amidst beautiful countryside fields, this property offers a serene escape from the hustle and bustle of every-day life. Whether you are seeking a peaceful sanctuary surrounded by nature or a place to enjoy quality time with loved ones, this property offers a versatile and welcoming space to suit your needs. Don't miss your chance to own this exceptional property that combines comfort, style, and convenience in a picturesque countryside setting.

LOCATION

Nestled in the picturesque setting of Norwich Road, Ludham this residence enjoys a charming location with convenient access to essential amenities. Ideal for families, the proximity to the primary school ensures a seamless educational journey for children. The presence of a nearby church and surgery adds to the community appeal, creating a tranquil and well-rounded living environment. Residents can also benefit from regular bus routes connecting to surrounding villages, offering easy transportation options and further enhancing the accessibility of this delightful Ludham location.





Three Jays Norwich Road

Ludham, Great Yarmouth

Upon arrival is a delightful first impression to this detached residence, that continues to impress throughout. Nestled within the desirable countryside, the vast driveway invites you providing off-road parking for family members and visitors, whilst the garage offers additional secure parking or storage space.

Step inside where you are instantly greeted by a welcoming entrance hall, leading you from the outside world into the sanctum of the home. The property's design embraces true tradition, enhancing characterful features. Positioned to the right side of the residence is a pleasant sitting room, where you can showcase your most comfortable furniture and decorative items, to unwind and relax after a long day.

At the heart of the home lies an open-plan kitchen/dining room, ensuring effortless interaction when hosting occasions and everyday family living. It is well-equipped with fitted units and appliances to be able to cook your favourite meals. Offering ample amount of storage and worktop space for your meal preparation. Transitioning over to the dining area, encouraging gatherings with loved ones.





Three Jays Norwich Road

Ludham, Great Yarmouth

Ascend to the first floor, where you will encounter three bedrooms, each designed to offer relaxation and privacy. The bedroom windows not only draws in the natural light but also frames views over the beautiful countryside. The principle bedroom flaunts its own ensuite, adding a luxury yet convenient touch. The main bathroom comprises of a three piece suite, accommodating all family members and guests.

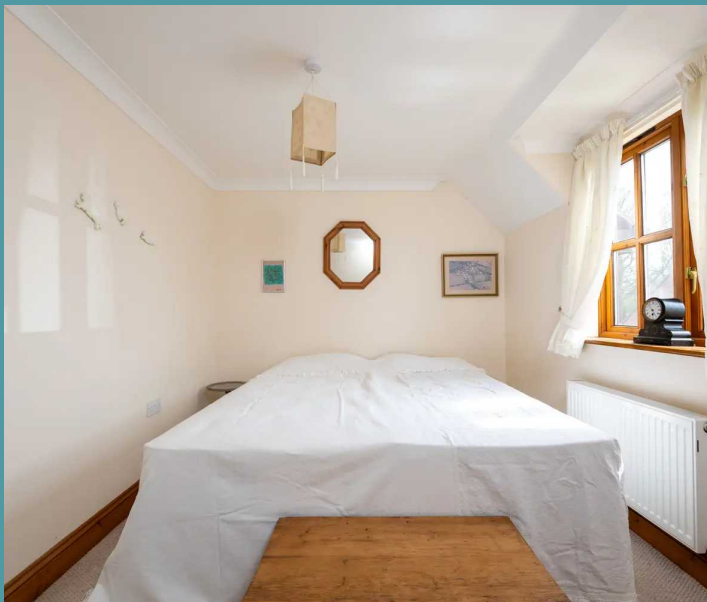
Towards the rear you will discover a mainly laid to lawn garden surrounded by colourful plants and shrubbery, with a patio area suitable for your outdoor furniture during the summer months. Overall, this garden is fully enclosed so you can enjoy in seclusion.

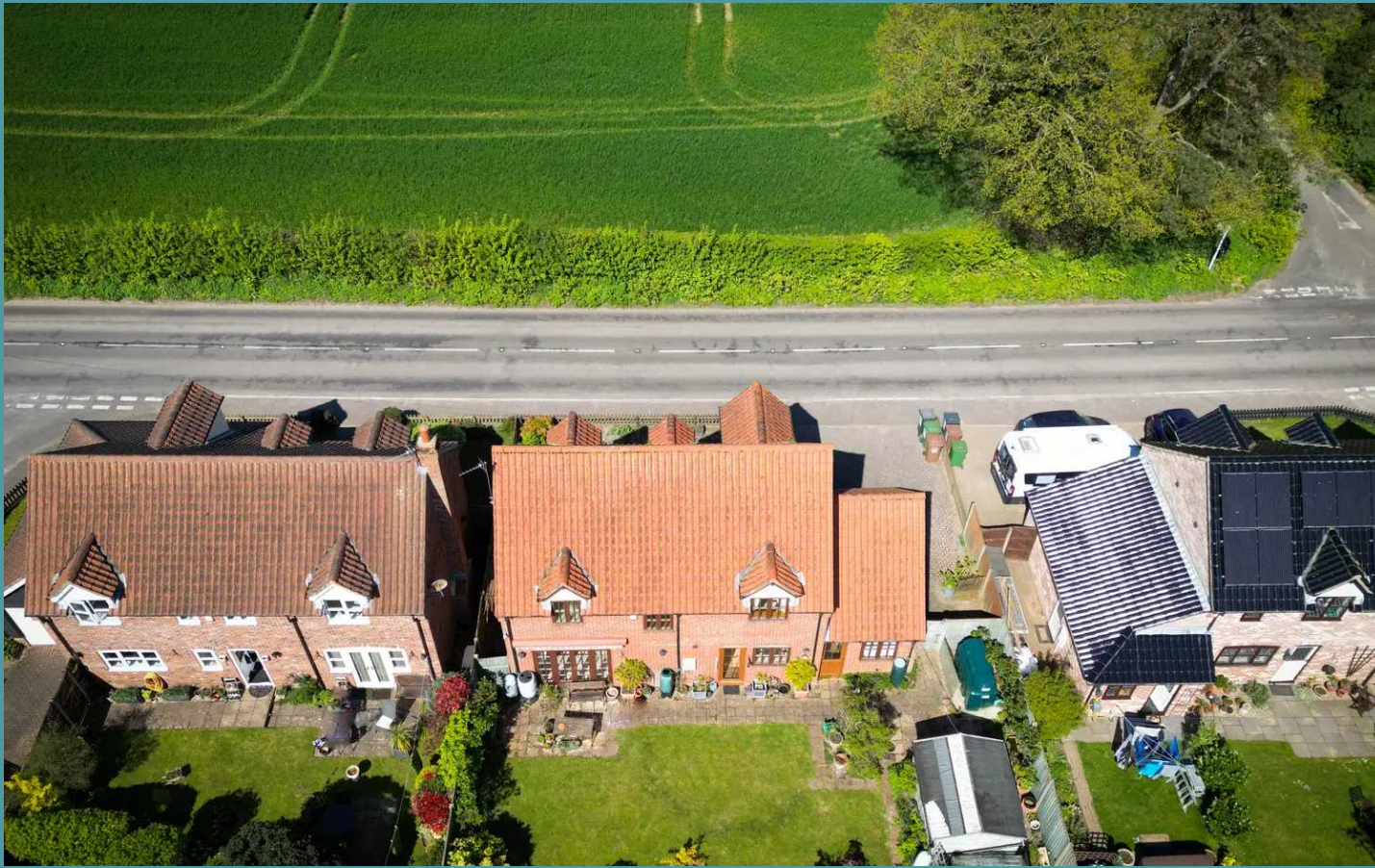
AGENTS NOTES

We understand that this property is freehold. Connected to mains water, electricity, drainage and a oil tank.

Heating system - Oil

Council Tax Band: D





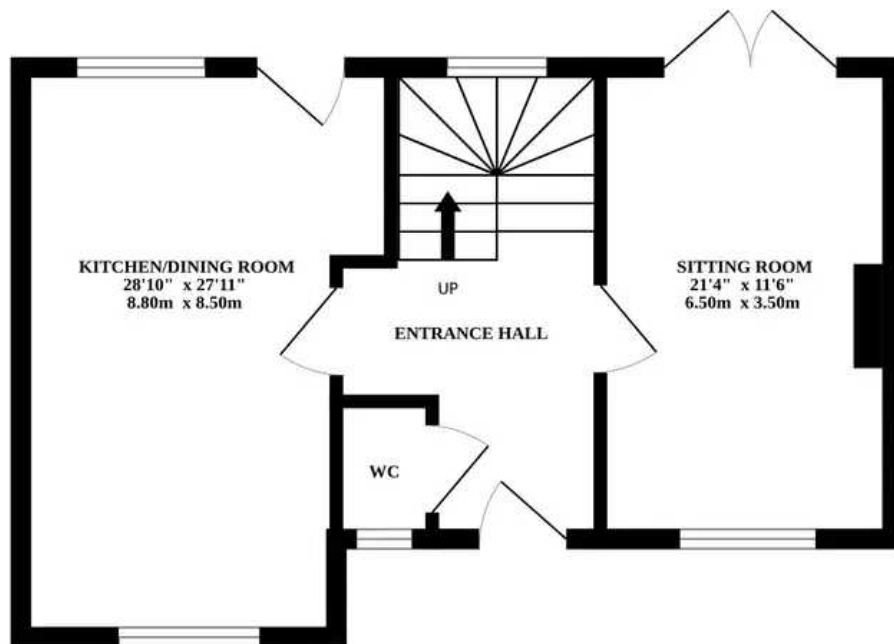
Three Jays Norwich Road

Ludham, Great Yarmouth

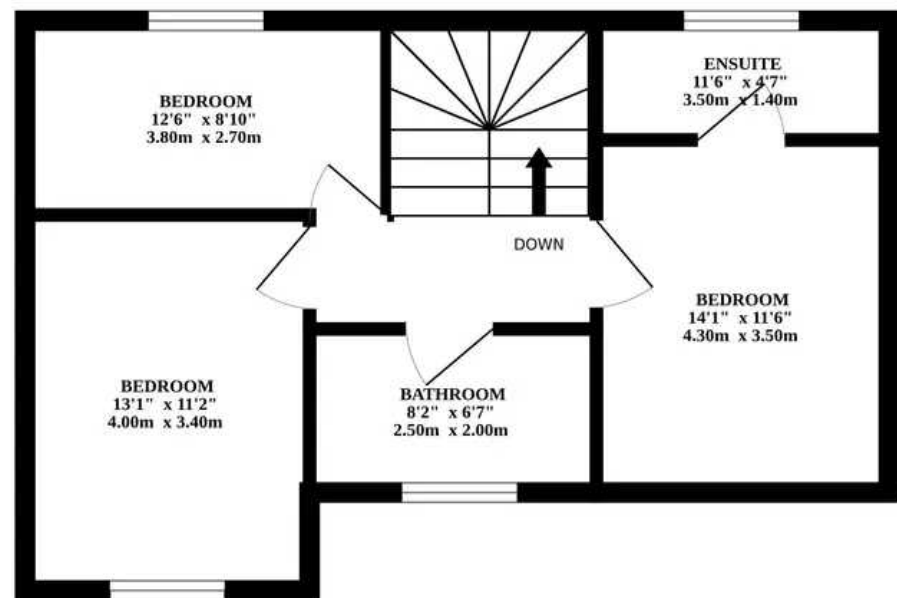
- REMARKABLE DETACHED RESIDENCE
- CHARACTER FEATURES THROUGHOUT
- PERFECT FAMILY HOME TO ACCOMMODATE A BUSY LIFESTYLE
- FULL OF POTENTIAL
- OPEN-PLAN KITCHEN/DINING ROOM
- COMFORTABLE SITTING ROOM - FILLED WITH AN ABUNDANCE OF NATURAL LIGHT
- THREE BEDROOMS - ONE WITH A PRIVATE ENSUITE
- WELL-MAINTAINED GARDEN - FULLY ENCLOSED
- BRICK-WEAVE DRIVEWAY & GARAGE
- SURROUNDED BY BEAUTIFUL COUNTRYSIDE FIELDS



GROUND FLOOR



1ST FLOOR



Whilst every attempt has been made to ensure the accuracy of the floorplan contained here, measurements of doors, windows, rooms and any other items are approximate and no responsibility is taken for any error, omission or mis-statement. This plan is for illustrative purposes only and should be used as such by any prospective purchaser. The services, systems and appliances shown have not been tested and no guarantee as to their operability or efficiency can be given.
Made with Metropix ©2024

