



## 22 Fallowfields, Lowestoft

Offers In Excess Of £400,000 Freehold

Vendors have found! This exquisite four bedroom detached house in a prime residential area of Fallowfields. Offering a large open plan kitchen/diner, lounge with wood burner, modern bathrooms, and a convenient garage with off-road parking. Close to amenities and the beach. Ideal family home stylish and high features.



This home is located on the most easterly point of the British Isles, in the traditional seaside town of Lowestoft. This wonderful seaside destination is steeped in history and offers a delightful blend of coastal allure and urban convenience. With its Blue Flag award-winning sandy beaches, Victorian seafront gardens and two charming piers, residents are treated to strolls along the shore and tranquil moments amidst nature's beauty. There are a number of schools in the area to suit all ages, a range of amenities including a Post Office, Bus Station and Train Station, which both run regular services to Norwich and plenty of shopping facilities and restaurants.



### AGENTS NOTE

We understand the property will be sold freehold and connected to all mains services.

Council tax band - D.





Located in a prime residential area, this exquisite four bedroom detached house presents a perfect opportunity for those seeking a fantastic family home. The highlight of this property is the large open plan kitchen and diner, featuring double doors that elegantly open to the lounge, creating a seamless flow ideal for hosting and entertaining guests. Stepping into the lounge, this versatile space can be opened up or closed off to relax and unwind with the warmth of the wood burner creating an inviting ambience. The contemporary kitchen boasts integrated appliances and Karndean flooring, adding a touch of luxury to the space. A convenient cloakroom completes the ground floor.

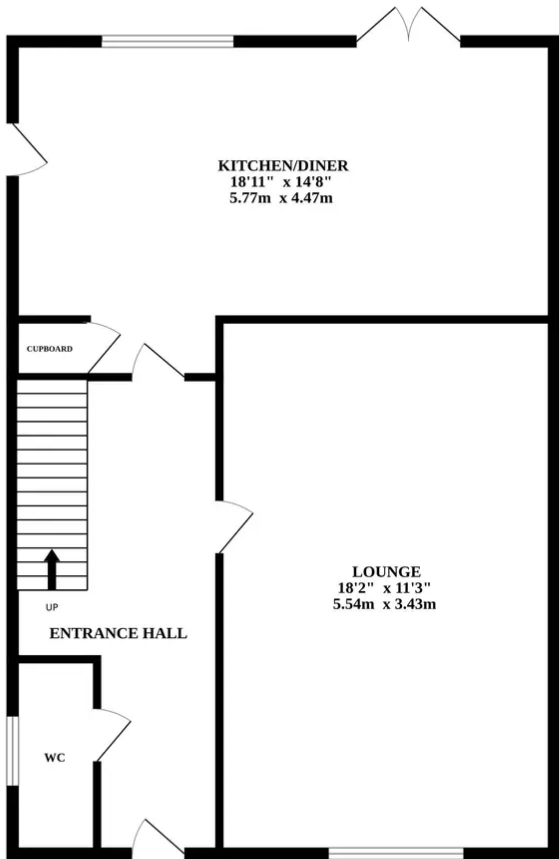
Upstairs, the first floor offers four spacious bedrooms, offering ample room for a growing family and guests and the potential to have a home office if required. The master bedroom benefits from a stylish ensuite bathroom. The main bathroom boasts a modern three-piece suite.

Outside, enjoy a beautifully landscaped garden filled with an array of shrubs and flowers. The patio area is the perfect space for housing outdoor furniture.

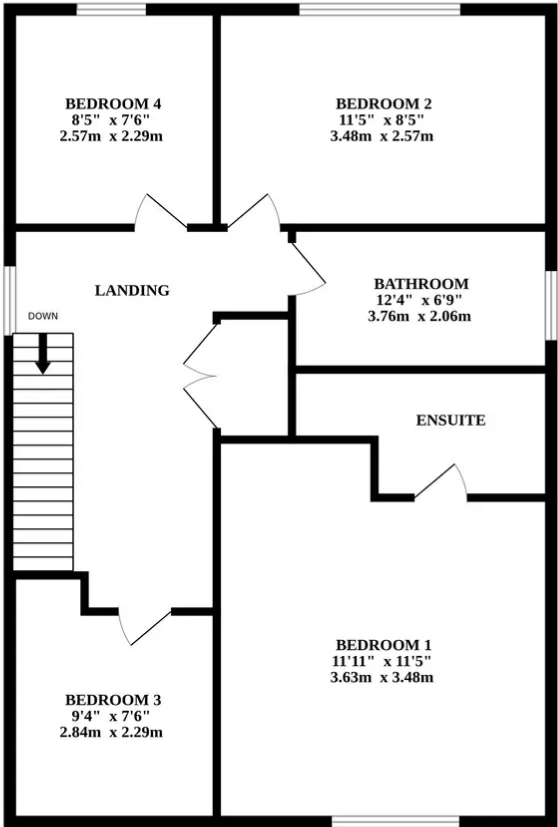
Situated conveniently close to local amenities and just a short drive to the beach, this residence provides the perfect combination of comfort and convenience. The high-quality build of the property ensures durability and longevity, making it a great investment for those looking for a long-term family home. Don't miss the chance to own this stunning property that promises a lifestyle of modern elegance and convenience.



GROUND FLOOR



1ST FLOOR



Whilst every attempt has been made to ensure the accuracy of the floorplan contained here, measurements of doors, windows, rooms and any other items are approximate and no responsibility is taken for any error, omission or mis-statement. This plan is for illustrative purposes only and should be used as such by any prospective purchaser. The services, systems and appliances shown have not been tested and no guarantee as to their operability or efficiency can be given.  
Made with Metropix ©2024



