

329 St. Faiths Road, Norwich

Offers In Excess Of £800,000 Freehold

An impeccable five bedroom detached house on a tranquil non-through road in an enviable development. Offering stunning interiors, an open plan kitchen/family room with high quality finishes and bi-fold doors, landscaped garden and three bathrooms including two ensuites. Perfect for families looking for a sophisticated, turn-key property close to all major amenities.

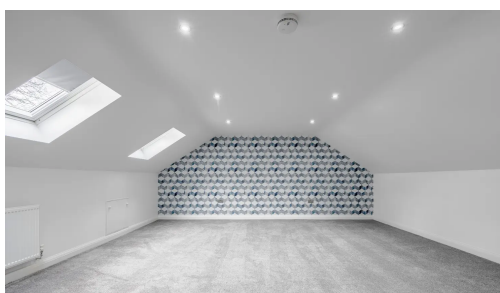
St. Faiths Road in Norwich seamlessly blends historical charm with modern convenience, making it a perfect haven for families. The picturesque thoroughfare, adorned with a mix of Victorian and contemporary architecture, creates a welcoming atmosphere. Lush greenery, inviting sidewalks, and nearby amenities make it ideal for peaceful family strolls, while local shops and cafes add to the convenience.



AGENTS NOTE

We understand the property will be sold freehold and connected to all mains services.

Council tax band - F.



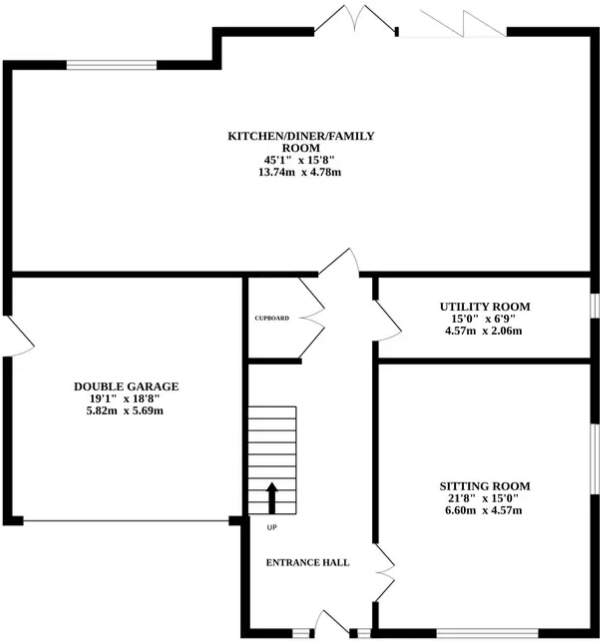
Presenting a prime opportunity to acquire a luxurious family home in a tranquil setting, this impeccable five-bedroom detached house is nestled within a serene no-through road, offering a peaceful retreat from the hustle and bustle of daily life. Situated within a highly coveted development, the property stands as a testament to refined taste and superior craftsmanship, showcasing a blend of elegance and contemporary design.

Upon arrival, the grandeur of the property is evident, with a sweeping driveway leading to a double garage – a practical feature for multiple vehicles and ample storage space. As you step inside, the home invites you to discover its well-appointed interiors, exuding an air of sophistication and warmth that is sure to captivate discerning buyers. The entrance sets the tone, with a large bright space with a striking staircase with feature lighting.

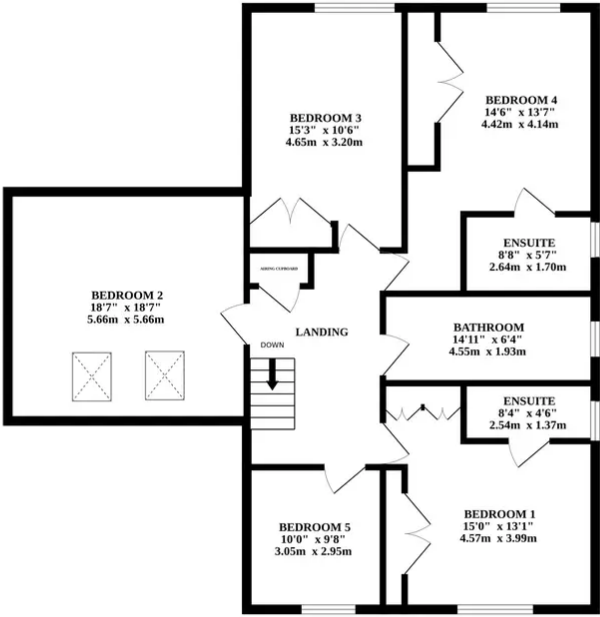
The heart of the home lies in the open plan kitchen/family room, a space designed for both culinary enthusiasts and those who appreciate the comforts of home. Boasting high-end finishes and modern appliances, the kitchen is a culinary delight, complete with an island that serves as a focal point for gatherings and casual dining. The seamless flow from the kitchen to the family room is complemented by bi-fold doors that lead to the landscaped garden, creating a seamless flow between indoors and outdoors and providing an ideal setting for alfresco dining or relaxation. You can also access a separate sitting room to the front aspect and a handy utility room.



GROUND FLOOR



1ST FLOOR



Whilst every attempt has been made to ensure the accuracy of the floorplan contained here, measurements of doors, windows, rooms and any other items are approximate and no responsibility is taken for any error, omission or mis-statement. This plan is for illustrative purposes only and should be used as such by any prospective purchaser. The services, systems and appliances shown have not been tested and no guarantee as to their operability or efficiency can be given.
Made with Metropix ©2024

Upstairs, the property features two ensuite bathrooms along with an additional family bathroom, ensuring convenience and privacy for all residents. Five generously proportioned bedrooms offer ample space for rest and relaxation, each designed to promote comfort and tranquillity.

Externally, the landscaped garden provides a tranquil oasis for outdoor enjoyment, with lush greenery and well-maintained grounds creating a serene backdrop for leisurely moments spent outdoors.

With its enviable location, superior design features, and exceptional attention to detail, this property presents a rare opportunity to embrace a lifestyle of luxury and comfort in a highly sought-after area. An exquisite residence crafted for those with an eye for quality, this home promises to provide a sanctuary for its new owners for years to come.

