

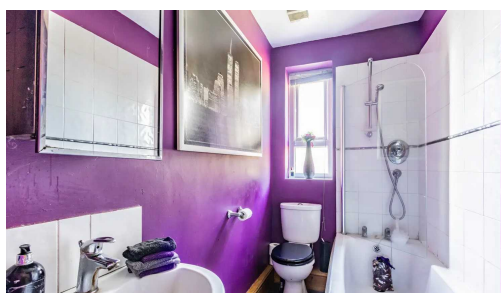
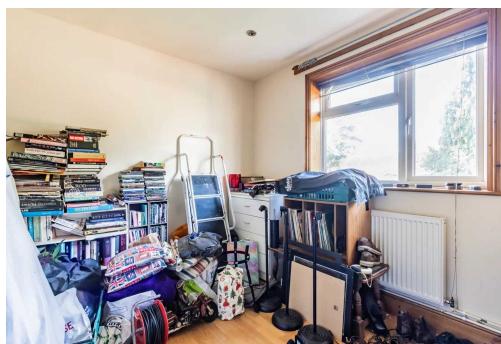
115 Wycliffe Road, Norwich

£180,000 Freehold

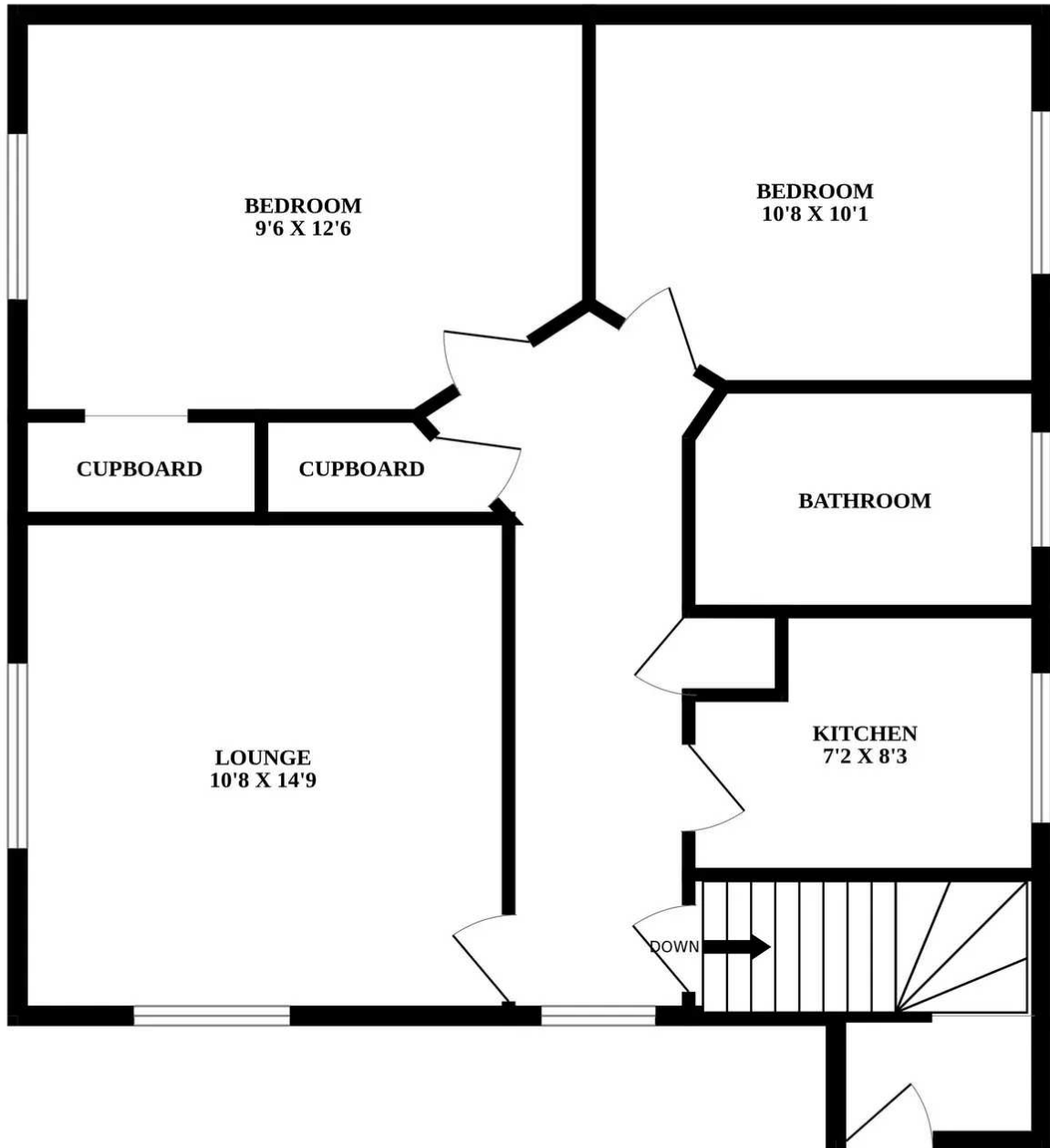
Stylish 2-bed first-floor flat in sought-after Norwich location. Spacious, well-maintained, and features a separate kitchen, generous double bedrooms, and attractive decor. Ideal for first-time buyers or investors. Secure this desirable property and experience modern living at its best.

Council Tax band: A

Wycliffe Road in Norwich, a city steeped in history and character, weaves its way through a neighbourhood that captures the essence of both tradition and contemporary living. Lined with an eclectic mix of architecture, from charming Victorian homes to more recent developments, the street exudes a sense of continuity and change. Tall trees grace the sidewalks, providing a green canopy that adds a touch of tranquillity to the urban scene. Residents and passersby are greeted by a diverse array of local businesses, quaint cafes, and shops that contribute to the street's lively atmosphere.



WYCLIFFE ROAD



Whilst every attempt has been made to ensure the accuracy of the floorplan contained here, measurements of doors, windows, rooms and any other items are approximate and no responsibility is taken for any error, omission or mis-statement. This plan is for illustrative purposes only and should be used as such by any prospective purchaser. The services, systems and appliances shown have not been tested and no guarantee as to their operability or efficiency can be given.
Made with Metropix ©2023

Introducing this exceptional 2 bedroom first floor flat, situated in the sought-after location of Norwich, NR4. Offering spacious and well-presented accommodation, this property is perfectly suited for first-time buyers.

Privately positioned with its own front door, this stunning flat comprises two generously proportioned double bedrooms, providing ample space for relaxation and rest. Designed with practicality and convenience in mind, this property includes a separate kitchen area, complete with ample space for appliances and storage, ensuring an efficient cooking experience.

The well-maintained bathroom features a shower over a bath, offering residents the option to indulge in a leisurely soak or a quick refresh, depending on their needs. The tastefully decorated interior enhances the overall ambience of the property, creating an inviting and comfortable living environment.

For first-time buyers, this flat is the perfect opportunity to step onto the property ladder with confidence and style. Benefit from a well-maintained property in a desirable location, providing a solid foundation from which to embark on your homeownership journey.

In summary, this exceptional 2-bedroom first-floor flat in Norwich, NR4 offers an enticing package to both investors and first-time buyers. Its well-presented interior, desirable location, and promising investment potential make it an attractive proposition. Take the opportunity to secure this property and experience the finest in modern living today.

