



9 Emms Court Ber Street, Norwich

£170,000 Leasehold

A stylish two bedroom ground floor apartment in the city centre offering modern living with open-plan design, one allocated parking space and an ensuite to master. Conveniently close to a range of amenities, the train station and only a short walk into the city centre. Perfect for first time buyers or those looking to stay well-connected to the city centre.

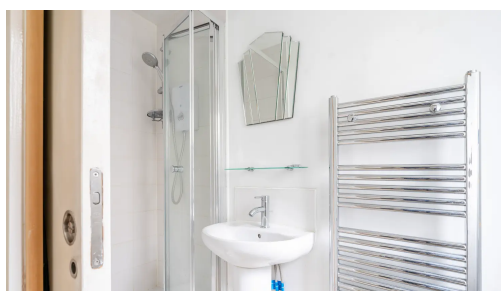
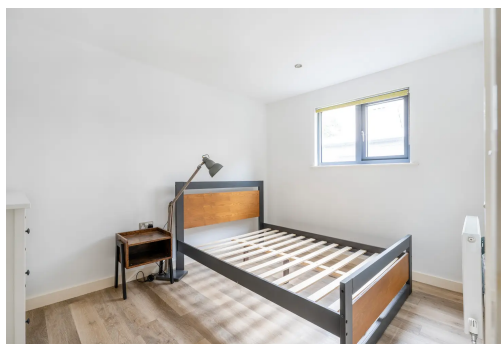
Situated in the heart of the city centre, this apartment offers unrivalled convenience, surrounded by an array of amenities including shops, cafes, restaurants, leisure centres, supermarkets, popular Riverside complex and Norwich Train Station. Embrace the vibrant city life, as everything you desire is just moments away.



AGENTS NOTE

We understand the property will be sold leasehold and connected to all mains services.

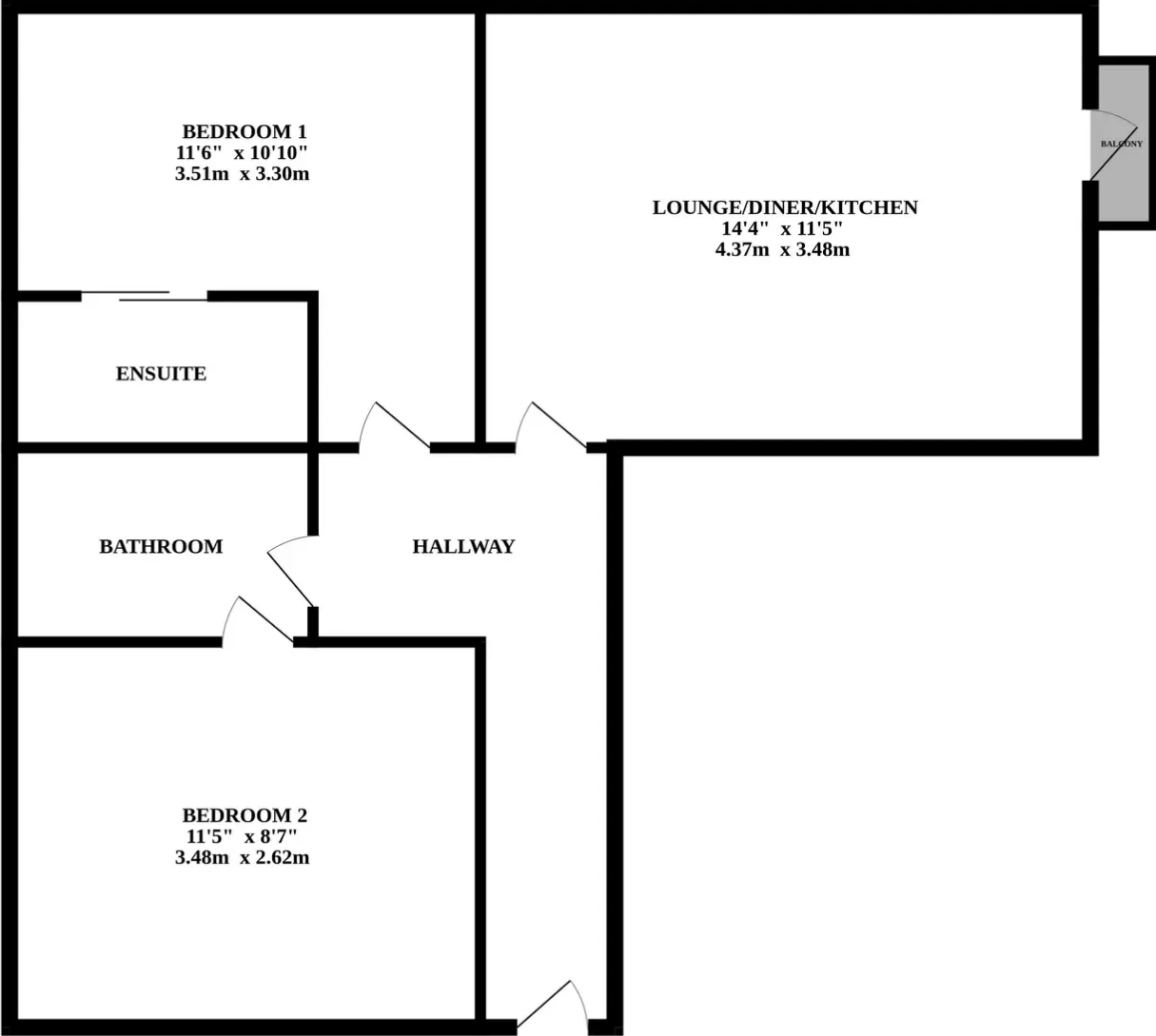
Council tax band - C.



Presenting this exquisite two-bedroom ground floor flat that embodies contemporary city living at its finest. With an open-plan design, this apartment offers a seamless flow between the living spaces, providing a modern and spacious feel. The property boasts two generously sized bedrooms, including an ensuite to the master bedroom for added convenience and luxury. The stylish bathroom reflects a clean and sophisticated aesthetic. The contemporary kitchen is both stylish and functional, providing an ideal space for culinary creativity. Situated on the ground floor, accessibility is key, making this residence effortlessly convenient.

Conveniently located within walking distance to the city centre, this property offers easy access to many amenities and the nearby train station, appealing to those with a busy city lifestyle. This apartment harmoniously combines practicality and style, creating a perfect retreat in the heart of the city. Immerse yourself in the comfort and elegance of this modern living space that promises a lifestyle of convenience and sophistication.





Whilst every attempt has been made to ensure the accuracy of the floorplan contained here, measurements of doors, windows, rooms and any other items are approximate and no responsibility is taken for any error, omission or mis-statement. This plan is for illustrative purposes only and should be used as such by any prospective purchaser. The services, systems and appliances shown have not been tested and no guarantee as to their operability or efficiency can be given.
Made with Metropix ©2024

