

4 Breydon Mews School Road, Great Yarmouth

£210,000 - £220,000 Freehold

Introducing this exceptional four-bedroom end-of-terrace home, ideally situated in a sought-after location, offering comfortable living across three well-appointed floors.

This property exudes elegance and charm, presenting a perfect opportunity for those seeking a modern and spacious family residence.

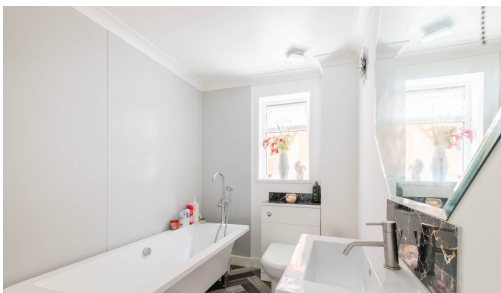
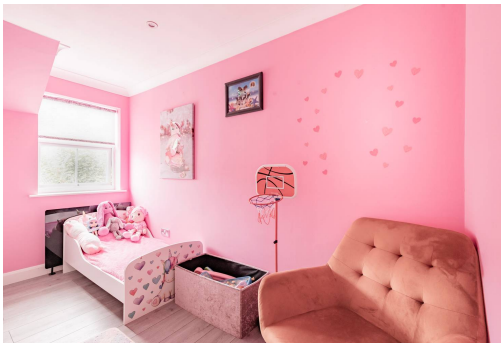
Location

Located down School Road, in the charming coastal town of Great Yarmouth, this property offers a unique blend of seaside tranquillity and urban convenience. Nestled in a quiet, picturesque mews, it provides a serene retreat from the hustle and bustle of everyday life. Just a short walk away, you'll find the vibrant town centre, rich with a variety of shops, cafes, and restaurants, including local favourites like the Market Place and Victoria Arcade. Great Yarmouth's stunning sandy beaches and historic pier are within easy reach. The area is well-served by excellent local schools and healthcare facilities, ensuring all essential needs are met. With easy access to public transport, including the Great Yarmouth railway station and major road networks, commuting to nearby cities like Norwich is convenient. Whether you're looking to explore the scenic Norfolk Broads or enjoy the lively seaside attractions, this location offers an ideal place for a well-rounded lifestyle.



School Road

Upon entering the property, you are greeted by a bright and welcoming interior, boasting two reception rooms that provide ample space for relaxation and entertainment. The ground floor is intelligently designed, featuring a convenient WC, a utility room, and a storage cupboard, along with the added benefit of an integral garage with an electric door, lighting, and power supply.

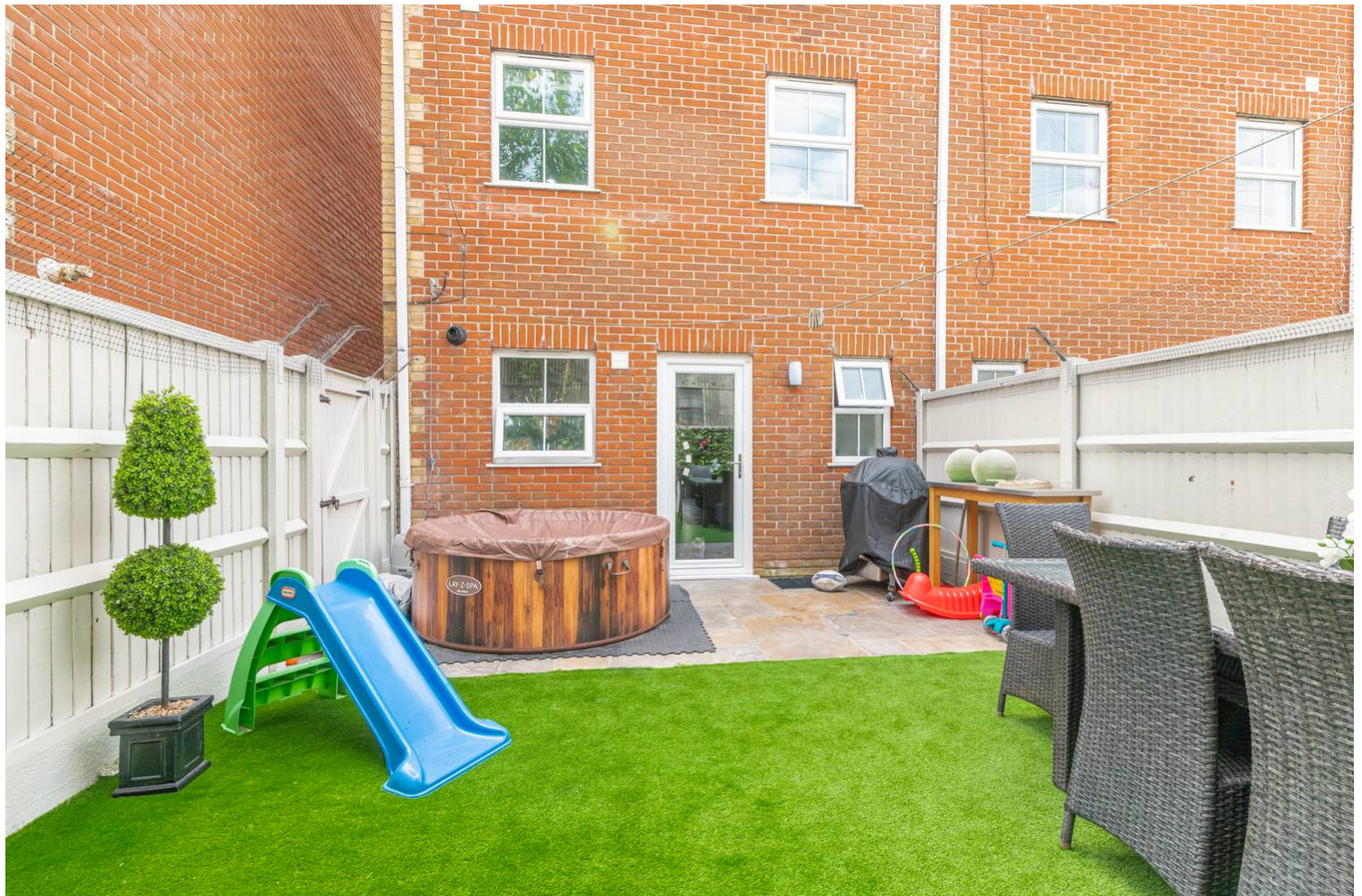


The presence of a new boiler, installed just one year ago, further enhances the appeal of this home by offering efficient heating solutions.

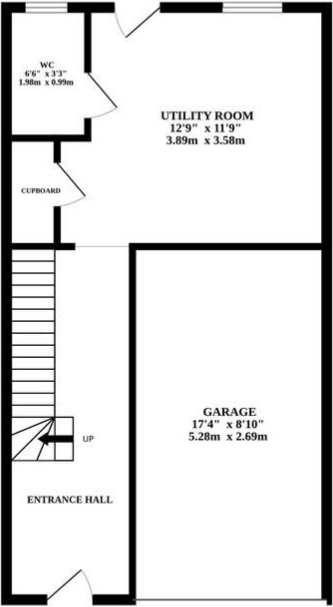
The first floor comprises a spacious bedroom, an L-shaped kitchen/diner that is perfect for hosting gatherings or enjoying family meals together, and a family bathroom. The bathroom is well-appointed with a toilet, vanity unit, heated towel rail, and a freestanding bath with a handheld shower attachment, providing a touch of luxury to every-day living. Moving up to the second floor, you will discover the master bedroom complete with an ensuite bathroom, along with two additional generously sized bedrooms that offer comfort and privacy.

The property benefits from an enclosed rear garden, which includes a patio seating area leading up to a landscaped north east facing artificial laid lawn with raised plant and shrub sleeper borders, all within a timber fence surround. Timber gate opening to passageway. Additionally, off-road parking is readily available with a driveway and garage, ensuring convenience for residents and guests alike.

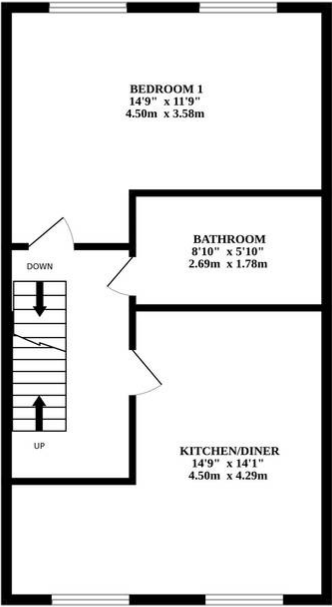
Conveniently located close to a range of amenities and excellent transport links, this residence promises a lifestyle of convenience and connectivity. With its spacious and bright interiors, this property presents a wonderful opportunity for those seeking a contemporary family home in a desirable location. Schedule a viewing today to fully appreciate the charm and comfort that this magnificent property has to offer.



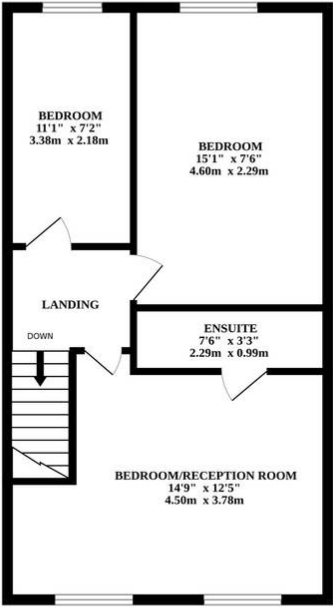
GROUND FLOOR



1ST FLOOR



2ND FLOOR



Whilst every attempt has been made to ensure the accuracy of the floorplan contained here, measurements of doors, windows, rooms and any other items are approximate and no responsibility is taken for any error, omission or mis-statement. This plan is for illustrative purposes only and should be used as such by any prospective purchaser. The services, systems and appliances shown have not been tested and no guarantee as to their operability or efficiency can be given.
Made with Metropix ©2024