



21 Rightup Lane, Wymondham

Price: £350,000

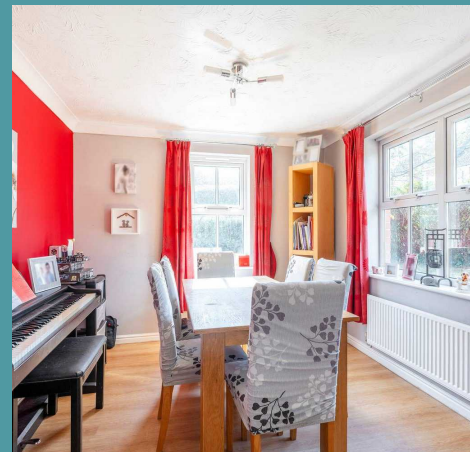
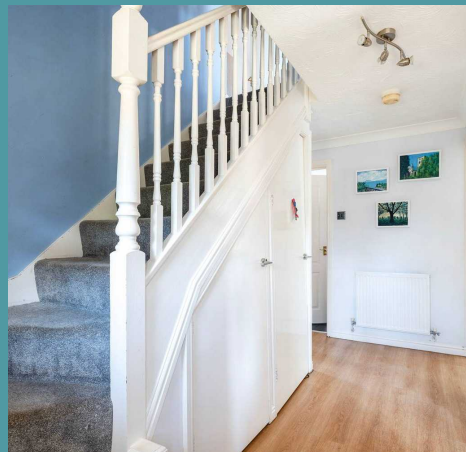
21 Rightup Lane

Wymondham

Idyllic family home with generous accommodation and prime location. The dual-aspect dining room provides a perfect setting for meals and gatherings. The contemporary kitchen features coordinated units and ample appliance space. The comfortable sitting room, with large windows and sliding doors, is ideal for relaxation. A total of four bedrooms and three bathrooms cater to the needs of a growing family. The outdoor space, with a lawn, patio, charging point, driveway, and garage.

THE LOCATION

Situated in the highly sought-after area of Wymondham. This property boasts an ideal location for those who rely on public transportation. Wymondham Railway Station is conveniently nearby, making it an excellent choice for daily commuters. With regular bus services to Norwich within a short walking distance, you'll have plenty of options to get around. You'll find a range of amenities within a short distance, including Morrisons, Waitrose and Lidl, ensuring that your grocery and shopping needs are easily met. Additionally, this location is well-placed for school options nearby, making it an attractive choice for those with children. Boasting more extensive shopping, dining and entertainment options, a short drive will take you into Norwich city centre, where you can explore a wide array of amenities and shops.





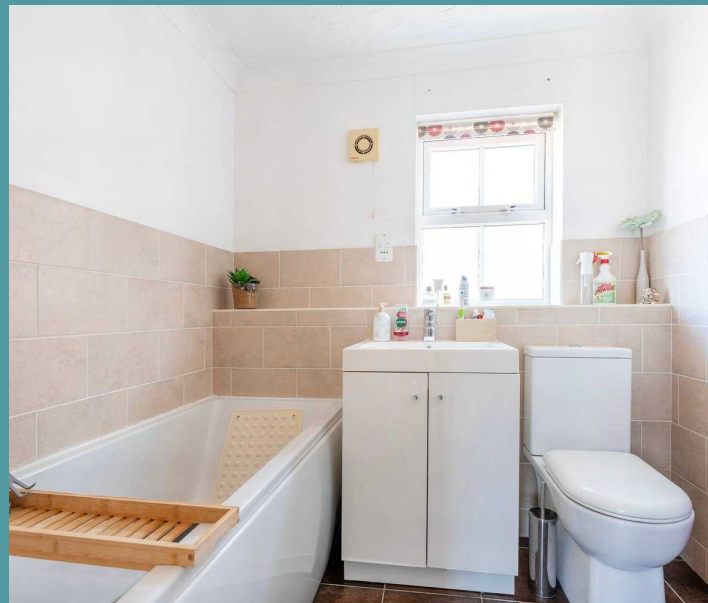
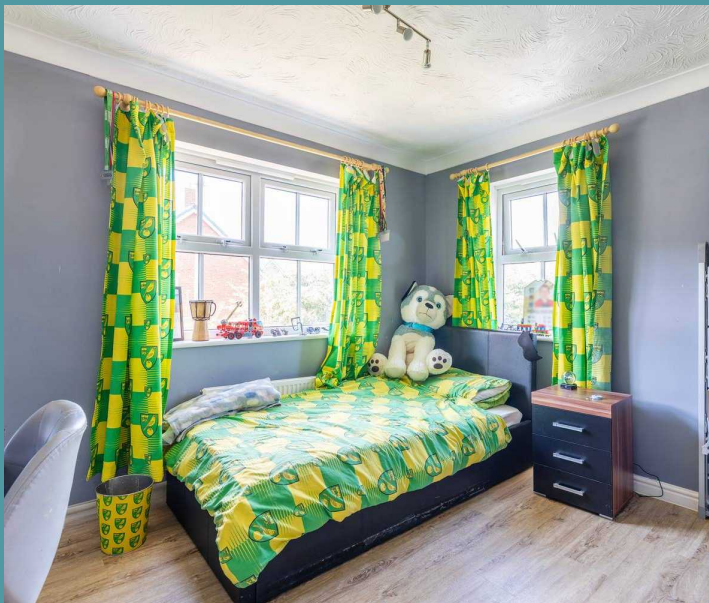
21 Rightup Lane

Wymondham

RIGHTUP LANE

Upon entering, one is greeted by the dual-aspect dining room, a perfect setting for every-day meals or gatherings with loved ones. The contemporary kitchen features coordinated wall and base units along with ample space for all essential appliances.

The comfortable sitting room is bathed in natural light, thanks to the large windows and sliding doors that lead out to the rear. This is the perfect space for relaxation and entertainment.



The ground floor features a convenient WC, while the ensuite and main bathroom are located upstairs, ensuring that all your needs are comfortably met. The property boasts four excellent bedrooms, providing ample space for large or growing families.



21 Rightup Lane

Wymondham

The outdoor space is equally as impressive, with an attractive lawn and a raised patio area that is perfect for outdoor seating. The property also features an electric charging point, driveway, and a single garage, providing added convenience and security.

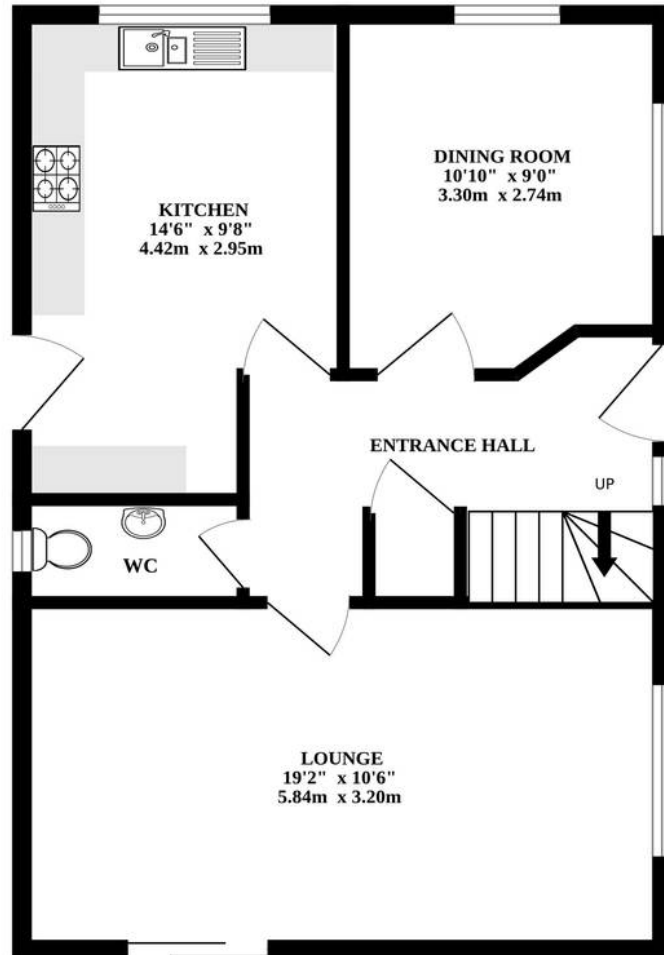
AGENTS NOTE

We understand this property will be sold freehold.

Council Tax Band - C



GROUND FLOOR



1ST FLOOR

