



Wreningham House Norwich Road, Wreningham

Offers in Region of £1,100,000

Wreningham House Norwich Road

Wreningham, Norwich

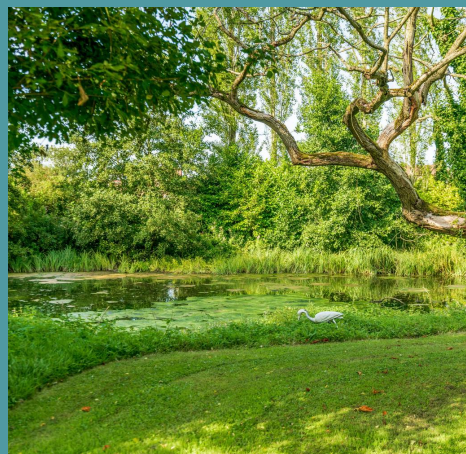
Located in the welcoming village of Wreningham, this exquisite 5-bedroom Georgian home epitomizes the pinnacle of luxury living. A majestic, tree-lined driveway winds gracefully toward the property, where an imposing entrance, secured by elegant electric gates, sets the tone for the opulence within. The meticulously manicured gardens offer a breath-taking introduction, highlighting the home's timeless Georgian elegance and popular architecture with its original sash windows and masterfully crafted stonework.

Council Tax band: G

Tenure: Freehold

EPC Energy Efficiency Rating: E

EPC Environmental Impact Rating: E





Wreningham House Norwich Road

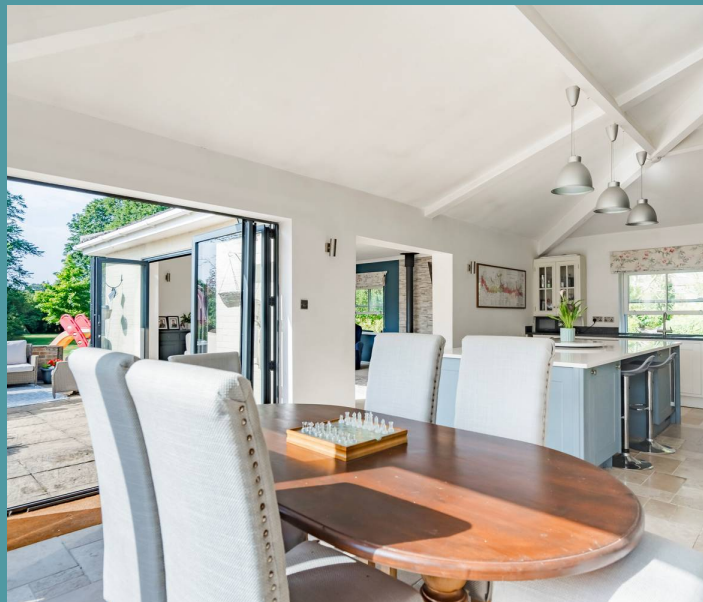
Wreningham, Norwich

Located in the welcoming village of Wreningham, this exquisite 5-bedroom Georgian home epitomizes the pinnacle of luxury living. A majestic, tree-lined driveway winds gracefully toward the property, where an imposing entrance, secured by elegant electric gates, sets the tone for the opulence within. The meticulously manicured gardens offer a breath-taking introduction, highlighting the home's timeless Georgian elegance and popular architecture with its original sash windows and masterfully crafted stonework.

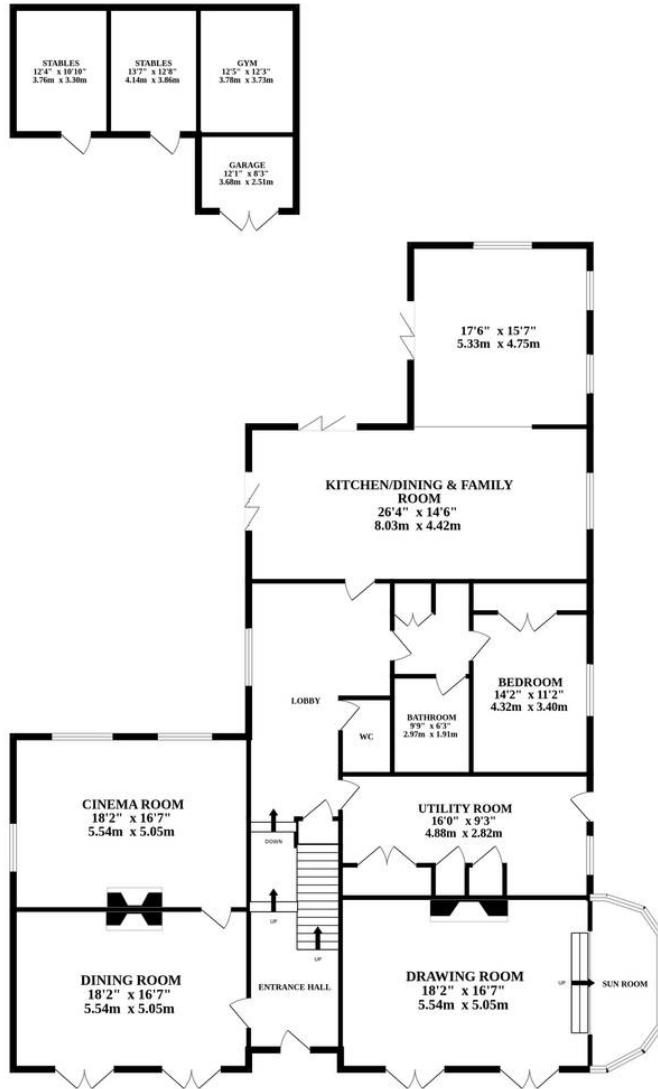
Location

Wreningham is a coveted gem nestled in the Norfolk countryside, offering a quintessential English village experience with the added benefit of proximity to the vibrant city of Norwich. This prime location is renowned for its tranquil setting, surrounded by lush farmland and scenic landscapes, making it an ideal retreat for those seeking peace and privacy. Despite its serene ambience, Wreningham enjoys excellent transport links, with easy access to the A11 and A47, connecting you effortlessly to Norwich and beyond. For those commuting, Norwich's mainline train station offers direct services to London Liverpool Street, making city travel convenient and efficient.

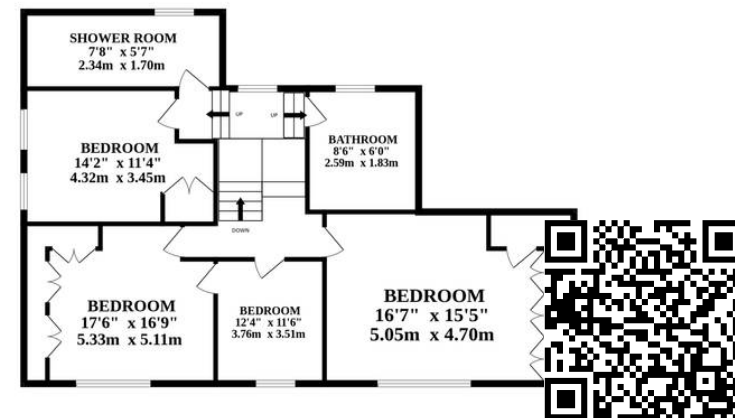
Norwich, just a short drive away, offers an abundance of cultural, dining, and shopping experiences. The city is a vibrant hub of activity, from its historic cathedral and the medieval Norwich Castle to the thriving arts and culture scene.



GROUND FLOOR



1ST FLOOR



Whilst every attempt has been made to ensure the accuracy of the floorplan contained here, measurements of doors, windows, rooms and any other items are approximate and no responsibility is taken for any error, omission or mis-statement. This plan is for illustrative purposes only and should be used as such by any prospective purchaser. The services, systems and appliances shown have not been tested and no guarantee as to their operability or efficiency can be given.
Made with Metropix ©2024