



4 Meadow View Low Road, Rollesby

£260,000 Freehold

This charming 2-bedroom semi-detached bungalow, nestled within a sought-after residential area, presents a rare opportunity to acquire a well-presented property with potential for personalisation and growth. Whether you are a first-time buyer looking to step onto the property ladder or an investor seeking a promising asset, this home is sure to tick all the boxes of comfort, convenience, and value.

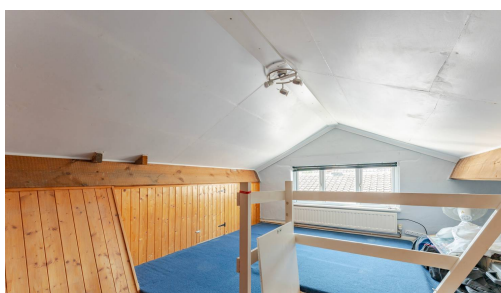
Location

Low Road is nestled in the heart of a tranquil Norfolk village, offering a perfect blend of countryside charm and modern convenience. Rollesby is part of the picturesque Broads National Park, known for its stunning waterways, lush landscapes, and abundant wildlife, making it a haven for outdoor enthusiasts who enjoy boating, fishing, and nature walks. The village itself is steeped in history, with the beautiful St. George's Church and traditional thatched cottages adding to its quaint, rural character. The property is well-connected, with easy access to the A47, leading to the historic city of Norwich and the bustling coastal town of Great Yarmouth, both just a short drive away. For families, there are reputable schools nearby, as well as a variety of local amenities, including shops, eateries, and community facilities. This location is an ideal choice for those seeking a serene rural lifestyle with the convenience of modern living close at hand.



Low Road

Stepping through the entrance, you are greeted by a well-presented living room adorned by a feature fireplace, promising warm and inviting evenings. Beyond, the property comprises a thoughtfully arranged kitchen, two bedrooms boasting ample natural light, a family bathroom, as well as a loft space providing versatility and potential for additional use to suit your needs.



This residence effortlessly marries comfort with functionality, boasting a tastefully maintained spacious rear garden offering endless possibilities for outdoor enjoyment, complemented by a convenient storage shed and room—an ideal setting for relaxation or entertaining guests.

Further enhancing the appeal of this property is the provision of off-road parking through a driveway leading to a single garage, ensuring your vehicles are housed securely and conveniently. Perfectly positioned, this home is in close proximity to various local amenities, allowing for effortless access to every-day necessities.

With its carefully curated features and well-preserved interiors, this residence exudes a sense of comfort and modern functionality.

