



Old Bridge House Stepshort, Belton

Old Bridge House Stepshort

Belton, Great Yarmouth

This exquisite detached residence presents an ideal opportunity for those seeking a perfect family home. Sitting in the quaint village of Belton, in close proximity to all local amenities and natural surroundings. With its bright and welcoming interior, versatile layout, and beautifully maintained garden, this property presents a unique opportunity to experience true luxury living in a desirable location.

LOCATION

Belton is a small village situated three miles west of Gorleston, hosting a range of local shops, schools and other amenities for convenience alongside a historic Roman site, the beautiful River Waveney and nearby is the popular nature park of Fritton Lake. There are regular transport links into the towns of Gorleston (3 miles) and Great Yarmouth (5 miles) which both offer a wider range of leisure and amenities.



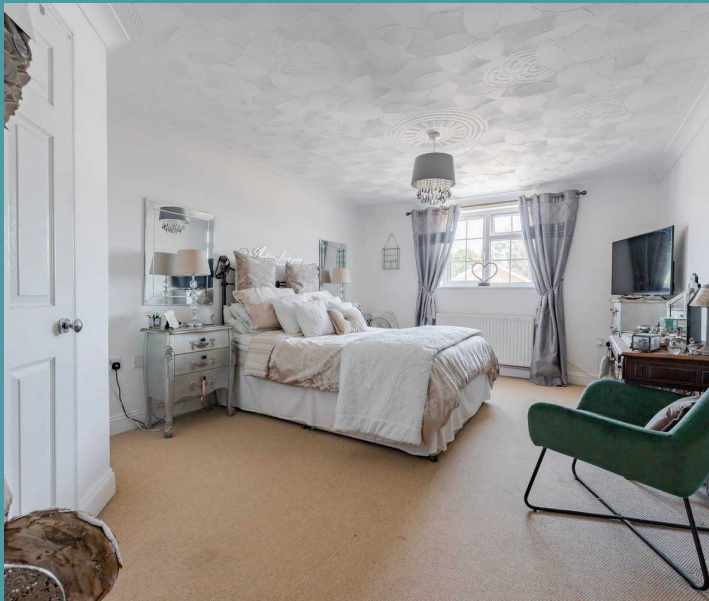
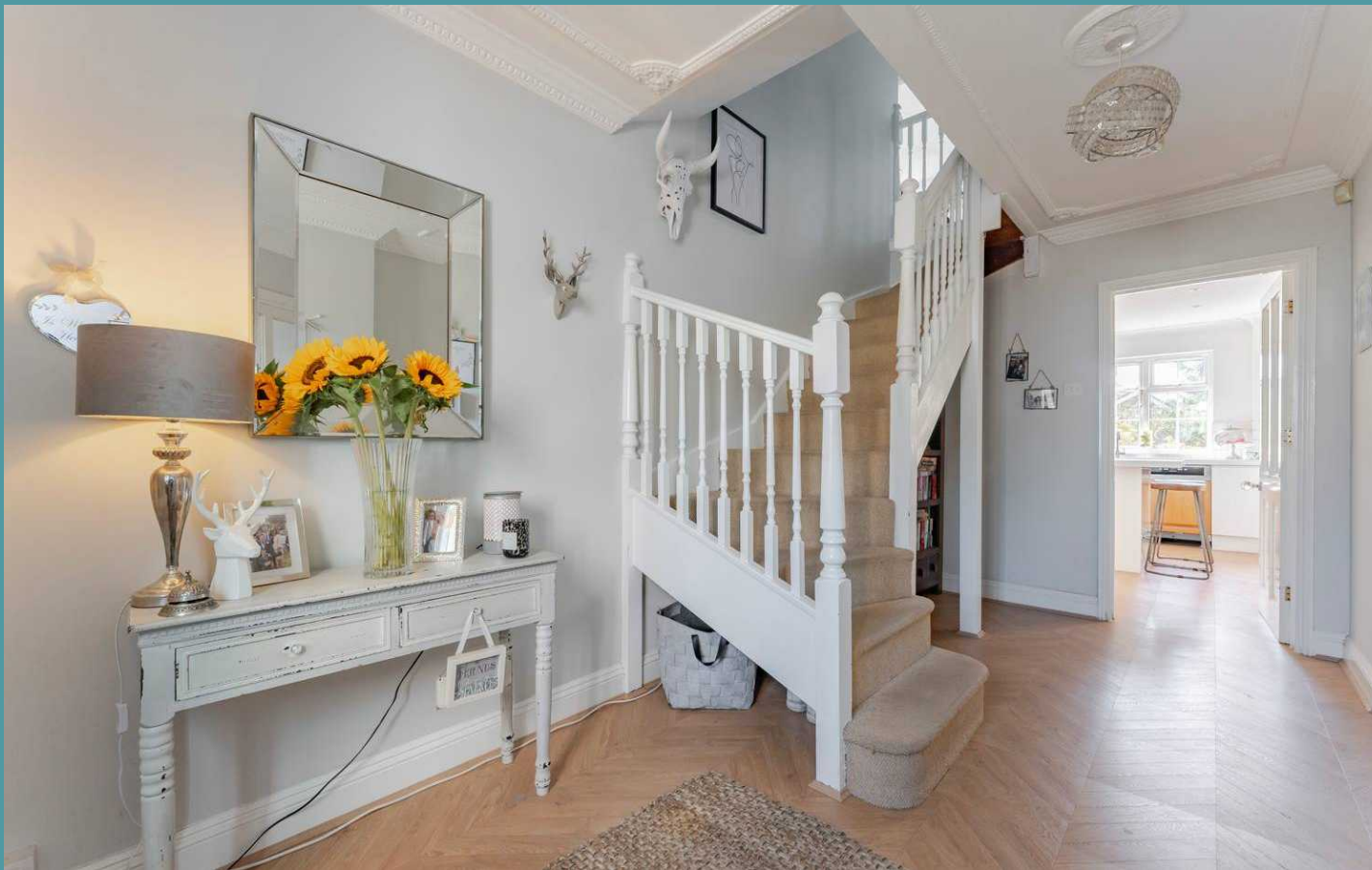
Old Bridge House Stepshort

Belton, Great Yarmouth

Upon arrival is a remarkable first impression to this detached residence, which continues to impress throughout. The driveway greets you, providing off-road parking for all residents and guests, whilst the garage offers additional secure parking or storage options.

Step inside where you are greeted by a bright and welcoming entrance hall, setting the tone for whats to come. Immediately capturing your attention with its warm and inviting ambience is the elegant sitting room, filled with an abundance of natural light. This well-presented space is perfect for showcasing your most comfortable furniture, to unwind and relax during the evenings. A versatile study is perfect for someone looking to work from home, or has the option to be a playroom or guest bedroom for larger families.

At the heart of the home lies an incredible kitchen, well-equipped with high quality units, a central island and integrated appliances, to enhance your cooking experience. Complemented by a WC and a functional utility room for your additional storage and laundry essentials. The kitchen seamlessly transitions into the dining room, ensuring effortless interaction when hosting occasions and everyday family living. One of the highlights of this residence is the stunning conservatory that extends the living space, allowing you to enjoy the outdoors within the comfort of your own home.

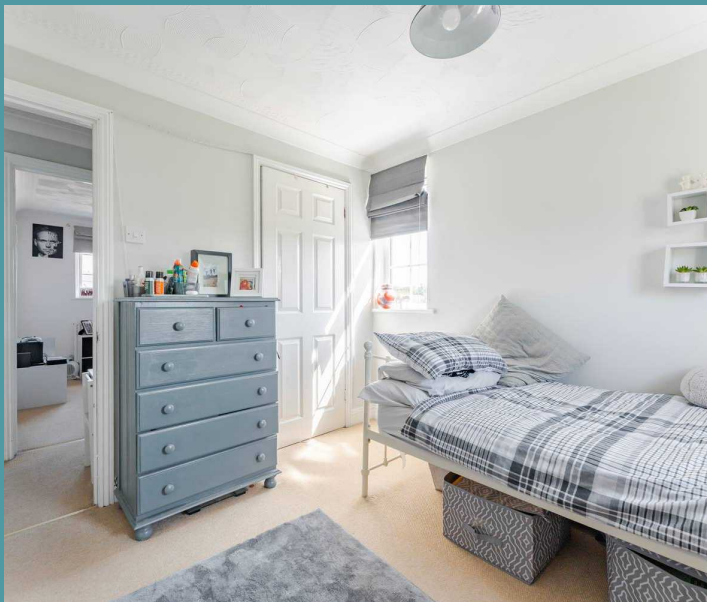


Old Bridge House Stepshort

Belton, Great Yarmouth

Ascend to the first floor where you will encounter four bedrooms, each thoughtfully designed to offer relaxation and privacy. The master bedroom flaunts built-in storage and a private ensuite, adding luxury yet convenient touch. The upper floor is completed with a family bathroom, accommodating all residents in the household.

Leading out the conservatory doors onto the patio, where the garden is equally appealing. This entertaining patio is ideal for your outdoor furniture to enjoy the afternoon sunshine or your al-fresco dining parties during the summer months. Following up to the well-maintained lawn, bordered by a wide range of botanical plants and shrubbery, with a brick-built storage unit for your gardening tools and equipment. A pergola is nestled within the garden, creating a beautiful space for your additional seating arrangement. Overall, this enjoyable space is privately enclosed so you can unwind in seclusion.





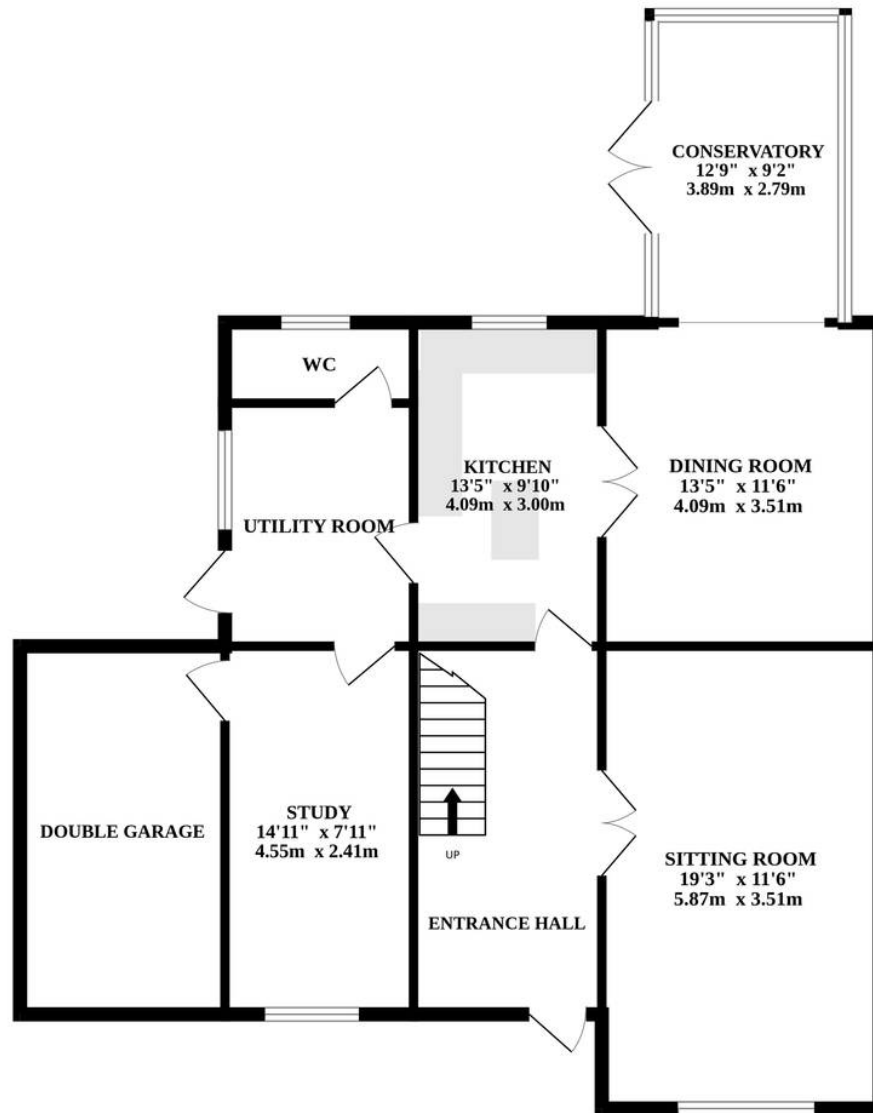
Old Bridge House Stepshort

Belton, Great Yarmouth

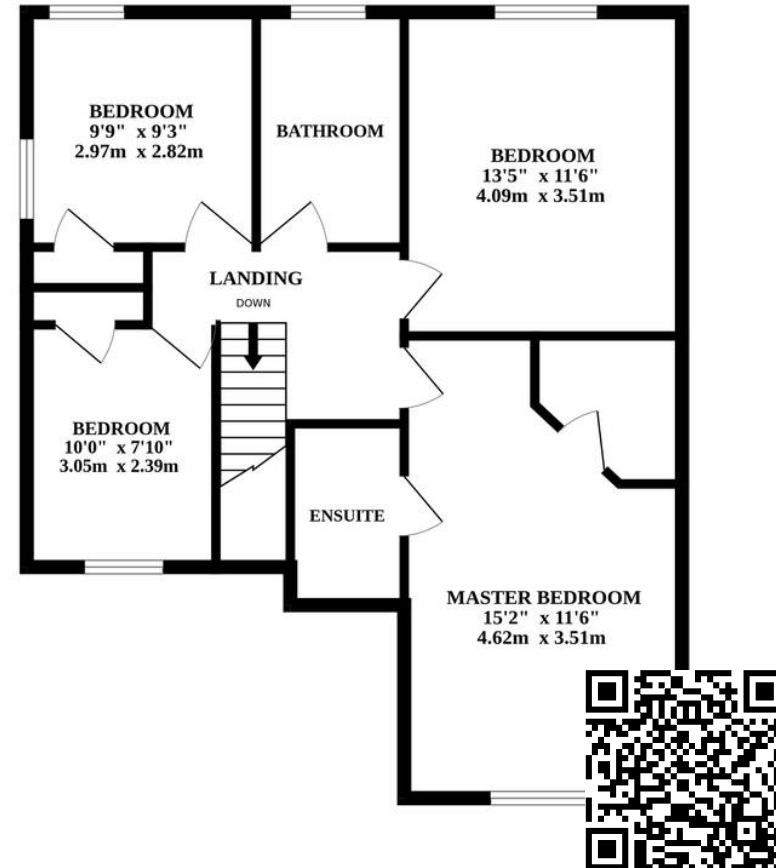
- EXQUISITE DETACHED RESIDENCE - PERFECT FAMILY HOME
- ELEGANT INTERIOR - PRESENTED TO A HIGH STANDARD
- WELL-EQUIPPED KITCHEN - FUNCTIONAL UTILITY ROOM & WC
- COMFORTABLE SITTING ROOM & DINING ROOM - PERFECT FOR ENTERTAINING AND EVERYDAY FAMILY LIVING
- STUNNING CONSERVATORY OFFERING GARDEN VIEWS
- VERSATILE STUDY PERFECT FOR SOMEONE LOOKING TO WORK FROM HOME
- FOUR BEDROOMS & A BATHROOM - LUXURY MASTER BEDROOM WITH A PRIVATE ENSUITE & STORAGE
- BEAUTIFULLY MAINTAINED GARDEN - FULLY ENCLOSED FOR PRIVACY
- IN CLOSE PROXIMITY TO ALL LOCAL AMENITIES AND NATURAL SURROUNDINGS



GROUND FLOOR



1ST FLOOR



OLD BRIDGE HOUSE

Whilst every attempt has been made to ensure the accuracy of the floorplan contained here, measurements of doors, windows, rooms and any other items are approximate and no responsibility is taken for any error, omission or mis-statement. This plan is for illustrative purposes only and should be used as such by any prospective purchaser. The services, systems and appliances shown have not been tested and no guarantee as to their operability or efficiency can be given.
Made with Metropix ©2024