



Summerfield House Tower Road, Fleggburgh

Offers Over £1,250,000

Summerfield House Tower Road

Fleggburgh, Great Yarmouth

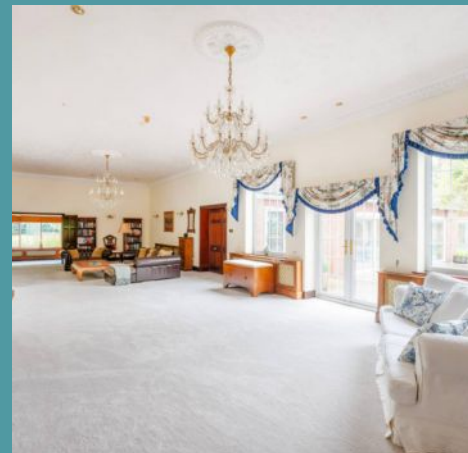
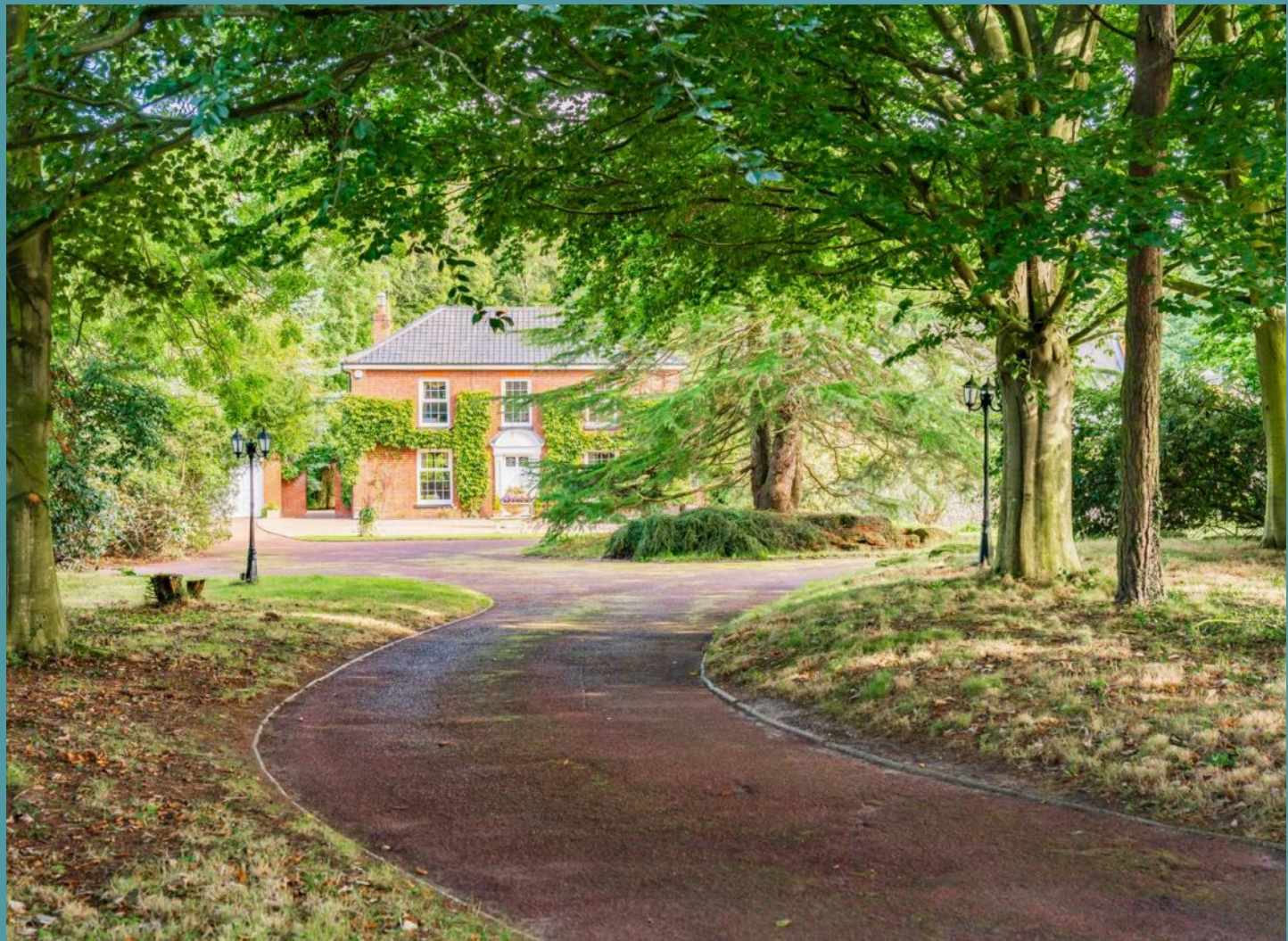
Introducing this one-of-a kind detached residence set on 8 acres (STMS) of meticulously maintained grounds and woodland, within the quaint village of Fleggburgh, in the picturesque English county of Norfolk. Steeped in history with modern upgrades, this home offers 6 reception rooms, including a sensational 52ft converted barn, as well as an indoor swimming pool, sauna and entertainment bar. With its grandeur, exquisite interior, beautiful grounds and prime location, this residence is one you would not like to miss.

Council Tax band: G

Tenure: Freehold

EPC Energy Efficiency Rating:

EPC Environmental Impact Rating:





Summerfield House Tower Road

Fleggburgh, Great Yarmouth

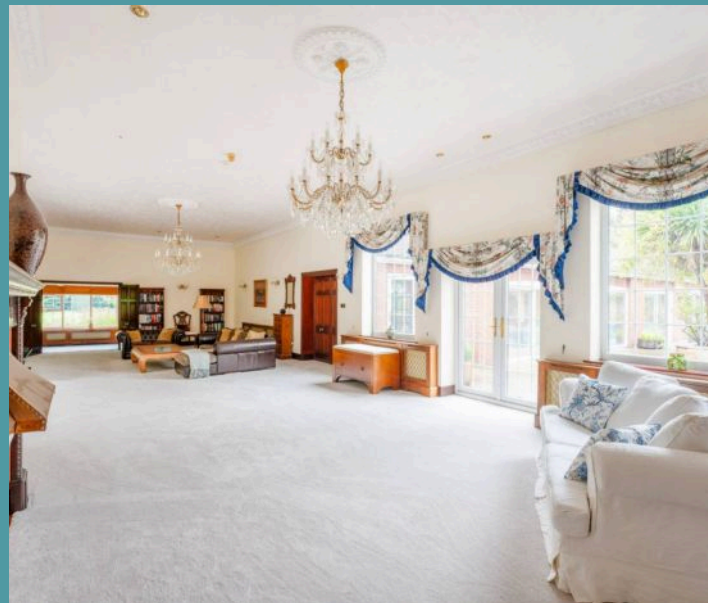
Introducing this one-of-a kind detached residence set on 8 acres (STMS) of meticulously maintained grounds and woodland, within the quaint village of Fleggburgh, in the picturesque English county of Norfolk. Steeped in history with modern upgrades, this home offers 6 reception rooms, including a sensational 52ft converted barn, as well as an indoor swimming pool, sauna and entertainment bar. With its grandeur, exquisite interior, beautiful grounds and prime location, this residence is one you would not like to miss.

FLEGGBURGH

Fleggburgh is a picturesque village located in the English county of Norfolk, nestled within the Broads National Park. It lies approximately 8 miles northwest of Great Yarmouth and 15 miles east of the historic city of Norwich. Surrounded by serene waterways, marshlands, and rich farmland, the village offers a peaceful rural setting while still being accessible to nearby urban centers. Fleggburgh boasts a close-knit community, with local amenities such as a primary school, village hall and traditional pub. Its natural beauty and proximity to the Norfolk Broads make it an attractive spot for nature enthusiasts and those seeking a tranquil lifestyle.

TOWER ROAD

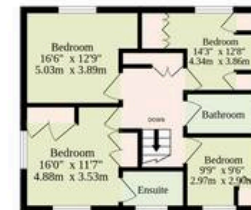
Welcome into this exceptional residence, where you are greeted by a grandeur that is evident in every detail. Showcasing a beautiful interior that preserves the property's original character,



Ground Floor
4907 sq.ft. (455.9 sq.m.) approx.



1st Floor
903 sq.ft. (83.9 sq.m.) approx.



All Unmarked Rooms Will Not Be Included In Sqft

TOTAL FLOOR AREA : 5810 sq.ft. (539.8 sq.m.) approx.

Whilst every attempt has been made to ensure the accuracy of the floorplan contained here, measurements of doors, windows, rooms and any other items are approximate and no responsibility is taken for any error, omission or mis-statement. This plan is for illustrative purposes only and should be used as such by any prospective purchaser. The services, systems and appliances shown have not been tested and no guarantee as to their operability or efficiency can be given.

Made with Metropix ©2025

