



Arbor Lane, Pakefield

Cresta, Arbor Lane

Pakefield

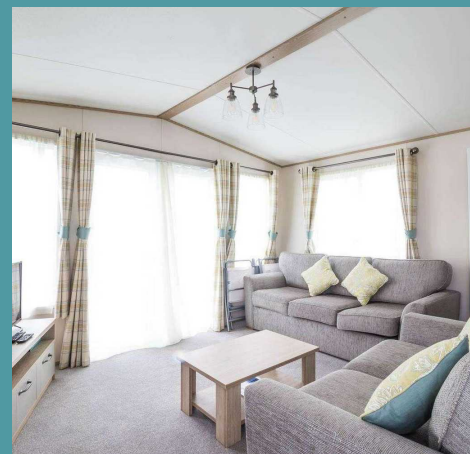
Explore this remarkable holiday home offering an enchanting retreat to escape the everyday busy lifestyle. Providing you a comfortable and convenient living space for its occupants. Sitting on the coast, in Pakefield Holiday Park, guaranteeing a unforgettable summer holiday with its wide range of wonderful facilities and natural surroundings.

LOCATION

Pakefield is a quaint suburb in Suffolk located approximately two miles south of the seaside town of Lowestoft. Sat atop the breathtaking cliff and offering astounding panoramic views out to the North Sea, there is no question as to why this charming suburb is so popular. Conveniently situated between Kessingland and Lowestoft, astride the A12, this charming suburb offers an abundance of amenities including Pakefield Beach, perfect for family days out, and Lowestoft Train Station, which lays on the Wherry and East Suffolk Lines, offering services to both Norwich and Ipswich.

Pakefield Caravan Park, situated on Suffolk's Sunrise Coast, offers stunning sea views and direct access to a sandy beach. It serves as a convenient base for exploring the coastal villages and rural gems of Suffolk and Norfolk. A short drive leads to the picturesque Norfolk Broads, renowned for its lakes, rivers, and diverse wildlife. The area also boasts charming pubs and village retreats, providing a perfect blend of relaxation and adventure for visitors.

With a wealth of fantastic facilities, ensuring a delightful experience for all guests. Dive into excitement at the outdoor pool, the children's playground, a family restaurant and bar, amusement arcade, entertainment and launderette.





Cresta, Arbor Lane

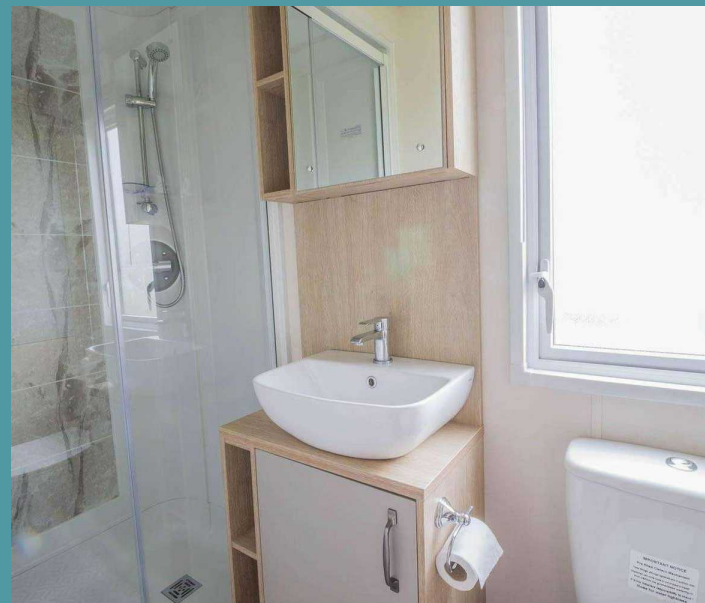
Pakefield

Step inside and discover a modern open-plan living area that is bright and spacious, ideal for relaxing and entertaining. High quality fixtures and fittings adorn every corner of this holiday home, creating a luxurious and inviting atmosphere. From sleek kitchen appliances to a stylish dining set-up, every detail has been thoughtfully designed to provide the utmost comfort and convenience.

This charming holiday home boasts two double bedrooms, one with a double bed and the other with two singles for children or guests, each offering a relaxing space to unwind after a day spent by the sea. A sleek shower room adds a touch of sophistication to the property, completing the package of modern living.

Picture yourself enjoying a morning coffee or an evening glass of wine on the decked terrace, soaking in the stunning panoramic sea views that stretch out before you. It is the perfect spot for placing your outdoor furniture, to enjoy your favourite meals or relax in the afternoon sunshine.

For your convenience, all fixtures and fittings are included in the sale, ensuring a seamless transition into your new home. Whether you are looking for a weekend getaway or a holiday let, this coastal holiday home has everything you need to live a life of luxury by the sea.





Cresta, Arbor Lane

Pakefield

- COASTAL HOLIDAY HOME
- PANORAMIC SEA VIEWS
- FANTASTIC SITE FACILITIES
- STONES THROW AWAY FROM THE BEACH
- OPEN-PLAN LIVING AREA - HIGH QUALITY FIXTURES AND FITTINGS
- ALL FIXTURES AND FITTINGS INCLUDED IN THE SALE
- TWO DOUBLE BEDROOMS & A SHOWER ROOM
- DECKED TERRACE FOR YOUR OUTDOOR FURNITURE
- IN CLOSE PROXIMITY TO ALL LOCAL AMENITIES AND NATURAL SURROUNDINGS

