



16 Abbey Court Bracondale, Norwich

Offers Over £195,000

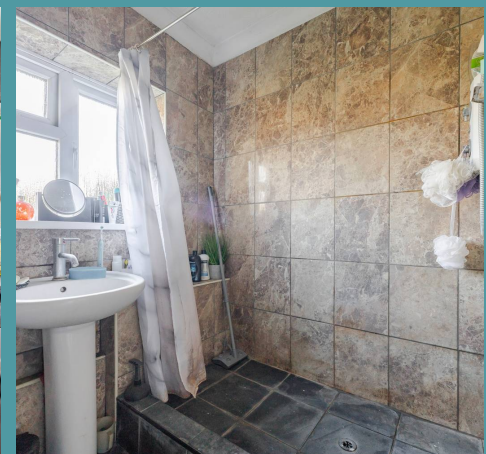
16 Abbey Court Bracondale

Norwich

Two-Bedroom Apartment on the City's Edge, this spacious two-bedroom apartment is ideally located near the city centre, offering the convenience of nearby shops, bars, and restaurants. The apartment offers generous living space, ideal for both relaxation and entertaining. To enhance its appeal, the vendor has recently extended the lease, providing added security and value for potential buyers.

The Location

The property is located within just a short walk from the centre of Norwich, the popular medieval city and the heart of East Anglia. The city provides lively night life, cultural and social activities as well as a great shopping experience. State, Faith and independent schools for all age groups, local shopping facilities, supermarkets, public houses, and a range of parks are all within a close range. Also, within close proximity to the University of East Anglia and the N&N university hospital.





16 Abbey Court Bracondale

Norwich

Abbey Court

This centrally-located apartment offers a comfortable and modern living space. The open-plan living area features bay windows that flood the room with natural light. Ample space allows for flexible furniture arrangements, creating a welcoming environment.

The kitchen is well-equipped with plenty of storage and counter space, providing a functional area for cooking and meal prep.

Two generously sized double bedrooms offer plenty of room for relaxation and privacy. The modern shower room, ensures your daily needs are met. Residents can also enjoy the communal grounds, providing a peaceful outdoor setting whilst still remaining close to amenities.

For added convenience, the apartment comes with a garage and on-road permit parking.

Agents Note

We understand the property will be sold leasehold and connected to all mains services.

Council tax band - B.

Maintenance charge is £1,200 PA

195 Years remaining on the lease.



