



Leeway Low Road, Martham

£625,000 Freehold

Conveniently situated close to local amenities, this home offers the best of both worlds - a tranquil retreat within easy reach of everyday conveniences. This exceptional three-bedroom detached house that offers a lifestyle of serene tranquillity on a stunning plot spanning over 1.25 acres. Boasting a picturesque setting with captivating triple-aspect field views, this property presents a rare opportunity to own a slice of countryside paradise. With vendors already found and no onward chain, the path to making this property your own is smooth and hassle-free.

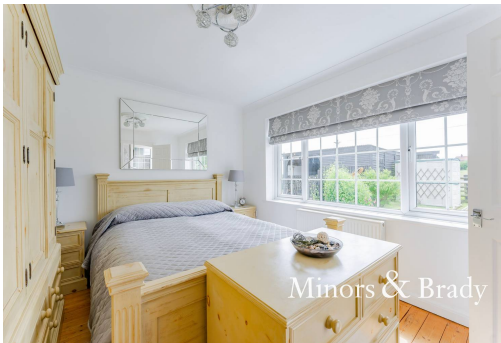
Location

Low Road in Martham, is a charming and peaceful location situated in the heart of the Norfolk Broads, offering an idyllic rural lifestyle with easy access to modern conveniences. Martham is a traditional village known for its scenic surroundings, including stunning waterways, nature reserves, and open countryside, making it a haven for outdoor enthusiasts. The village provides essential amenities such as local shops, pubs, and schools while being just a short drive from the larger towns of Great Yarmouth and Norwich. Its proximity to the coast, including popular beaches like Winterton-on-Sea, offers the perfect blend of countryside tranquillity and coastal charm. Ideal for those seeking a serene environment with the added benefit of nearby attractions, Low Road presents an excellent opportunity for those looking to enjoy the best of Norfolk living.



Low Road

Upon entering the home, you are greeted with a warm and inviting ambience that flows seamlessly throughout. The interior features a spacious lounge creating a cosy atmosphere for relaxing evenings. The kitchen is a culinary haven, equipped with a built-in oven, electric glass stove top, and ample natural light filtering through the windows.



Additionally, there is plumbing for a dishwasher or washing machine, providing modern convenience in a stylish setting.

Elegance meets functionality in the dining room, where a multi-fuel log burner adds character and charm to the space. Each of the three bedrooms offers a peaceful retreat, while the well-appointed bathroom features a luxurious free-standing bath, a shower, wc, and sink, providing a spa-like experience in the comfort of your own home.

The property's layout has been thoughtfully designed with ease and functionality in mind, presenting everything one could desire on a single floor. This design ethos ensures a seamless flow throughout the residence, enhancing both accessibility and practicality for every-day living.

Outside, the property continues to impress with a 164-metre long garden that beckons you to enjoy the beauty of nature. The expansive green space offers ample room for outdoor furniture, creating the perfect backdrop for entertaining or simply unwinding amidst the peaceful surroundings. With a property bathed in natural light and boasting a bright and airy feel throughout, every corner exudes a sense of comfort and tranquillity.



