



Bethany Stow Heath Road, Felmingham

Price: £450,000

Bethany Stow Heath Road

Felmingham, North Walsham

Field views at every aspect! This stunning cottage boasts an open-plan living area bathed in natural light, seamlessly connecting to a rear garden for indoor-outdoor flow. A cosy log burner adds charm, while the kitchen features a range cooker and a unique stable door. Upstairs, the luxurious primary suite offers dual-aspect views and a private ensuite bathroom, accessed via a separate staircase. Two further bedrooms share a bathroom, and a large landing provides built-in storage and a study area. Outside, a sprawling lawn, decked entertaining area, and private driveway complete this idyllic escape.

THE LOCATION

In the picturesque Norfolk countryside, Felmingham offers a rural escape with convenient access to nearby amenities. This charming village is characterised by its atmosphere, scenic landscapes, and close-knit community spirit. Surrounded by rolling fields and idyllic countryside, Felmingham provides a peaceful retreat for those seeking a slower pace of life. Despite its setting, Felmingham remains well-connected to neighbouring towns and cities, allowing residents to easily access essential services and entertainment options. The natural beauty of the area is further enhanced by its proximity to outdoor leisure opportunities, including walking trails, nature reserves and recreational spaces.





Bethany Stow Heath Road

Felmingham, North Walsham

HEATH ROAD

Upon entry, the open plan sitting room immediately captivates with its abundance of natural light streaming through three expansive windows, creating a warm and welcoming ambiance. The bi-fold doors seamlessly connect the interior space with the rear, allowing for a fluid transition between indoor and outdoor living. The sitting room, is enhanced by a cosy log burner housed by brick accents and a wooden mantelpiece, adding a touch of rustic charm. The ground floor also boasts an inviting and spacious entrance, complemented by a convenient WC for added ease. The kitchen/diner features a rich wooden theme, a range cooker and an original stable door that infuses the space with character.

The primary suite is a sanctuary of luxury, offering dual-aspect views that flood the room with natural light. The ensuite bathroom ensures ultimate convenience and privacy, providing a soothing space after a long day. A separate staircase provides private access to the main bedroom, delivering a sense of privacy. Two well-proportioned bedrooms share an additional bathroom, catering to family or guests with style and comfort. The extensive landing not only provides built-in storage but also features a study area, perfect for those who work or study from home.





Bethany Stow Heath Road

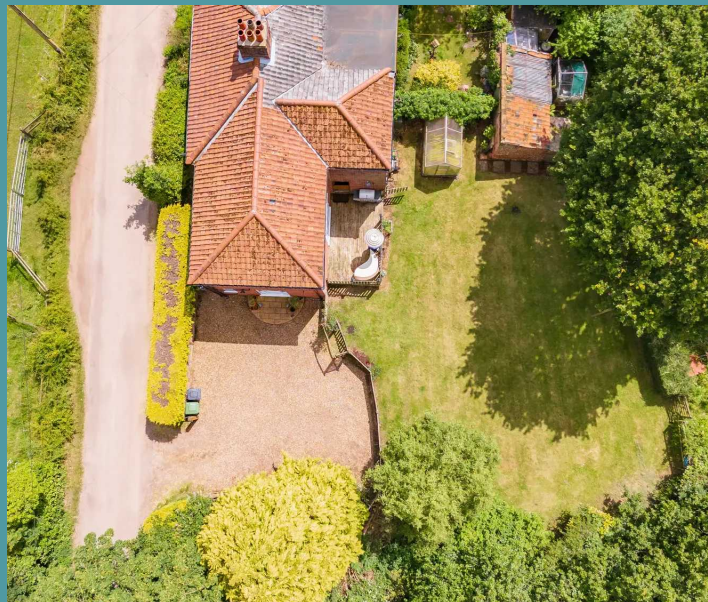
Felmingham, North Walsham

Outside, the large garden plot is a true haven, boasting a sprawling lawn, a decked area for outdoor entertaining and idyllic field views at every turn. A private gated driveway offers ample space for multiple vehicles, ensuring convenience and security for residents and guests alike.

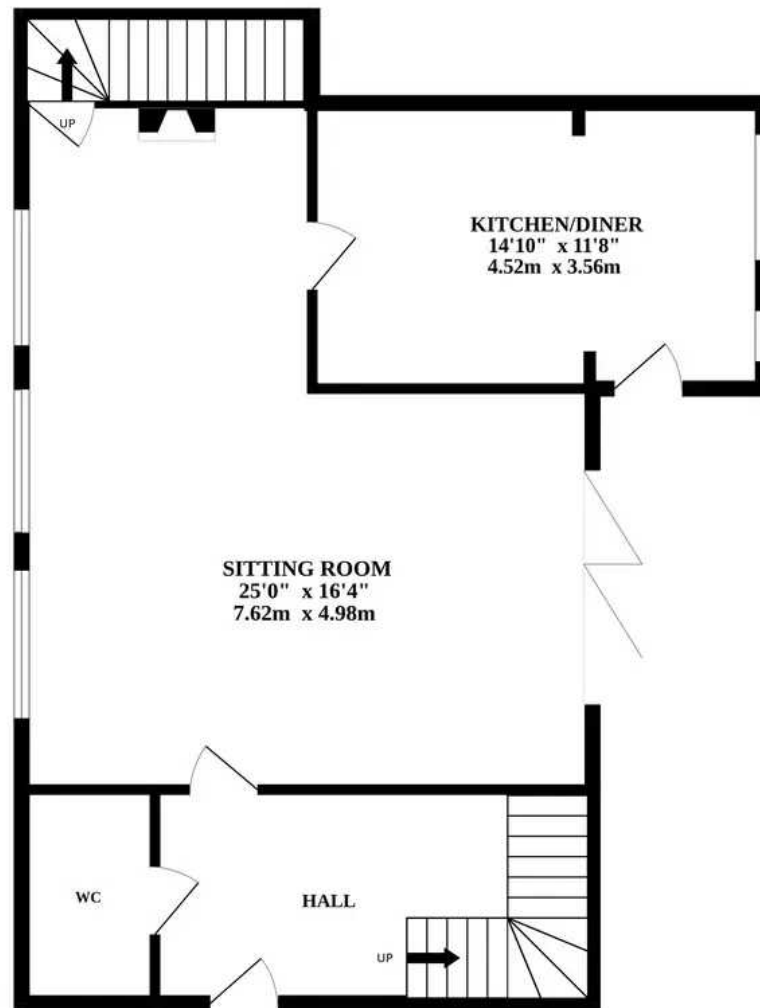
AGENTS NOTE

We understand this property will be sold freehold.

Council Tax Band - B



GROUND FLOOR



1ST FLOOR

