

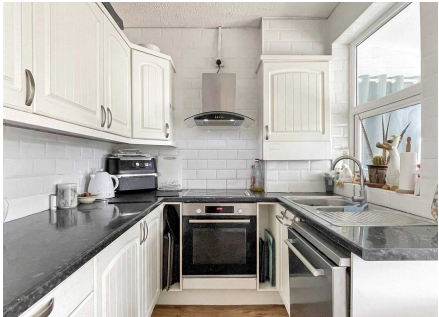
3 Dell Road East, Lowestoft

£210,000 Freehold

Presenting this charming 2 bedroom semi-detached bungalow, which perfectly showcases the ease of single-floor living in a sought-after location. This property is a harmonious blend of practicality and comfort, offering a versatile living space that caters to the needs of modern-day living, making it an ideal choice for a variety of lifestyles.

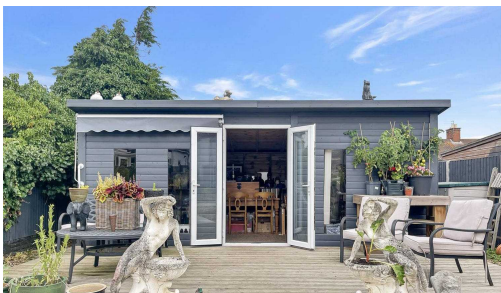
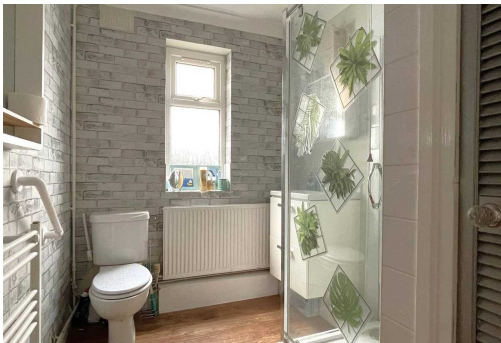
Location

Located at Dell Road East, Lowestoft, this property is nestled in a prime position on the Suffolk coast. Just a short walk away, you'll find Lowestoft's award-winning sandy beaches, perfect for enjoying sunny days and seaside strolls. The area is well-connected, with excellent transport links including the nearby train station, offering direct routes to Norwich and London, making commuting easy and convenient. The bustling town centre, with its shops, cafes, and restaurants, is within easy reach, providing a blend of modern amenities and charming local businesses. For families, the location is ideal, with several well-regarded schools, parks, and leisure facilities nearby. Whether you're looking for a peaceful coastal lifestyle or a vibrant community with plenty of activities, this location is perfectly positioned to offer the best of both worlds.



Dell Road East

Step inside the property and be greeted by a well-designed layout that maximises space and functionality. The entrance hall leads you effortlessly to both bedrooms, a convenient shower room, and a welcoming lounge area.



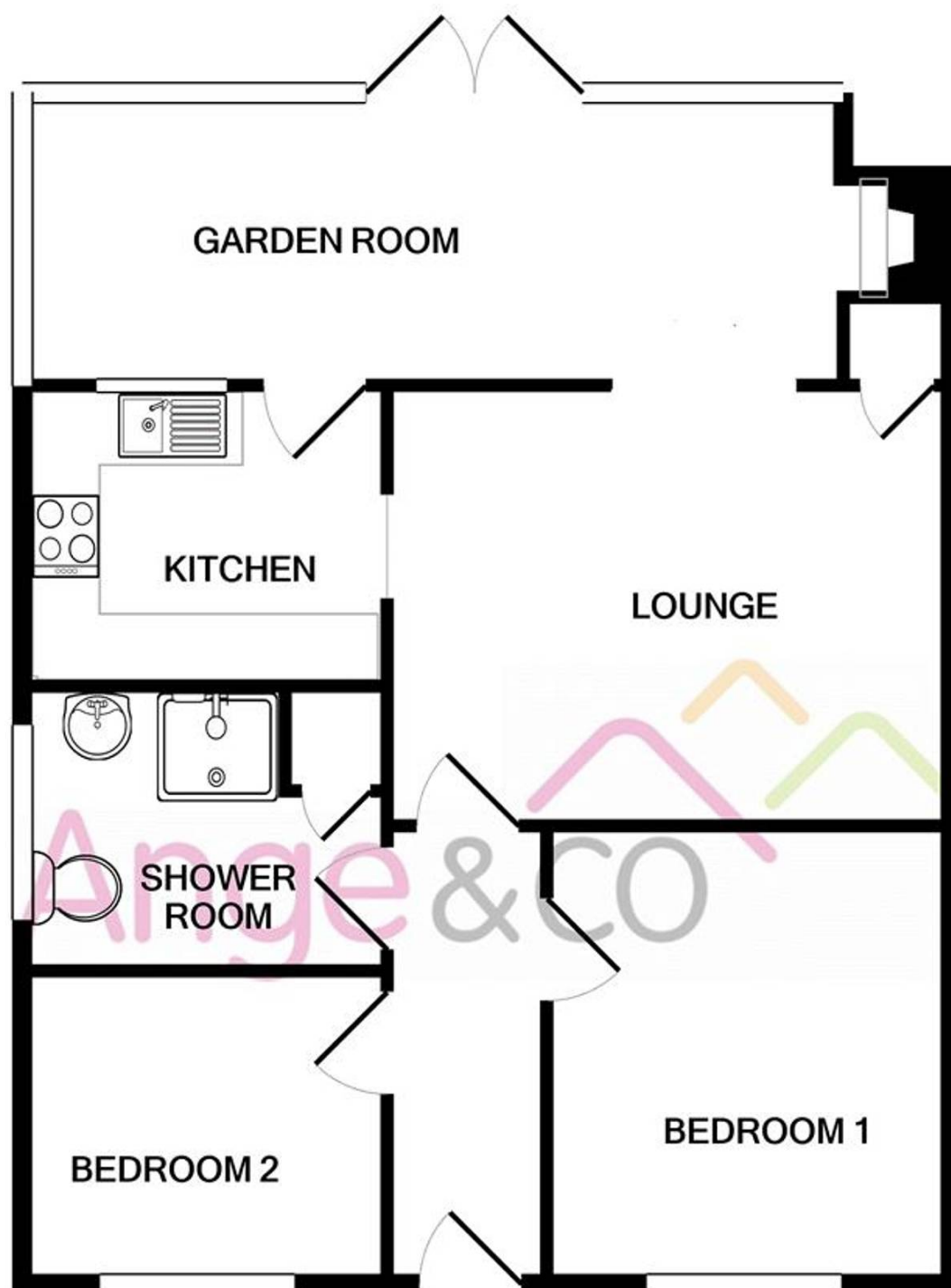
The open-plan design seamlessly connects the lounge to a spacious garden room, which serves as a versatile addition to the home, offering panoramic views of the rear garden along with the warmth of a cast iron wood burner for those cosy evenings.

The heart of the home, the kitchen, is easily accessible through the lounge and garden room, creating a fluid transition between living spaces. Equipped with modern appliances, the kitchen is designed for both efficiency and style, accommodating all culinary needs. The bathroom features a contemporary white suite, complete with a vanity unit, basin, low-level WC, and an enclosed cubicle with an electric shower, providing both style and functionality.

Adding to the allure of the property is a timber outbuilding that offers endless possibilities for utilisation, be it a home office, a gym, or a storage space - the choice is yours. Furthermore, the low-maintenance rear garden provides a serene outdoor retreat, perfect for relaxation and entertainment.

Moreover, the property boasts off-road parking for two vehicles, ensuring convenience in your daily routine. With easy access to local amenities and excellent transport links, this residence offers the epitome of convenience and connectivity.





DELL ROAD EAST, LOWESTOFT, NR33 9LA
TOTAL APPROX. FLOOR AREA 655 SQ.FT. (60.9 SQ.M.)

Whilst every attempt has been made to ensure the accuracy of the floor plan contained here, measurements of doors, windows, rooms and any other items are approximate and no responsibility is taken for any error, omission, or mis-statement. This plan is for illustrative purposes only and should be used as such by any prospective purchaser. The services, systems and appliances shown have not been tested and no guarantee as to their operability or efficiency can be given

Made with Metropix ©2020