



Woodlands Scrathby Road, Scrathby
£950,000

Woodlands Scratby Road

Scratby, Great Yarmouth

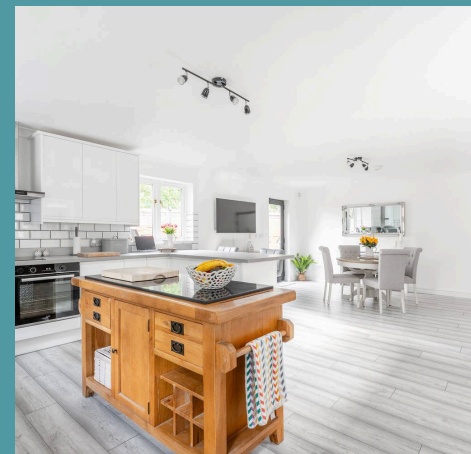
Sitting amidst private secluded grounds of over one acre, stands a truly exquisite residence offering an unparalleled living experience. The six-bedroom residence, built in 2004, radiates a distinctive charm that seamlessly combines modern design elements with timeless elegance. With its impeccable design, luxurious amenities, and prime location, it is the epitome of refined living. Don't miss the chance to acquire this home and experience all it has to offer.

Council Tax band: D

Tenure: Freehold

EPC Energy Efficiency Rating: C

EPC Environmental Impact Rating:





Woodlands Scratby Road

Scratby, Great Yarmouth

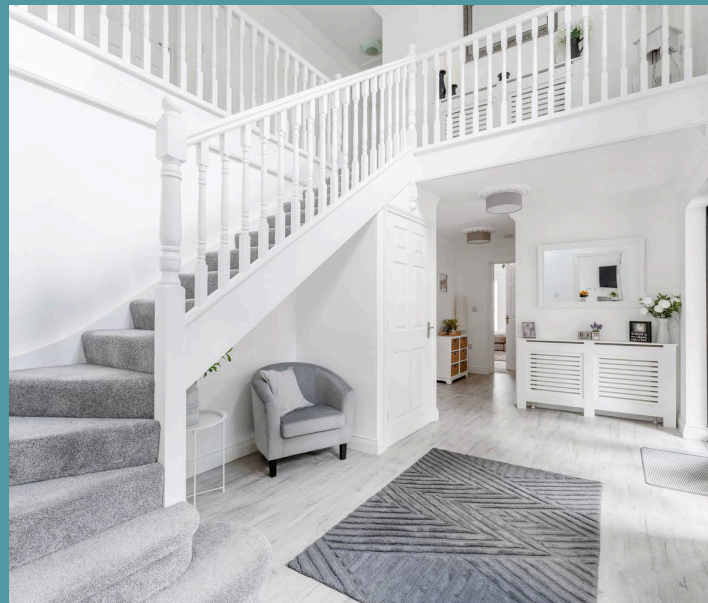
Sitting amidst private secluded grounds of over one acre, stands a truly exquisite residence offering an unparalleled living experience. The six-bedroom residence, built in 2004, radiates a distinctive charm that seamlessly combines modern design elements with timeless elegance. With its impeccable design, luxurious amenities, and prime location, it is the epitome of refined living. Don't miss the chance to acquire this home and experience all it has to offer.

LOCATION

Scratby is a charming coastal village located in Norfolk, England, along the eastern coast of the country. Situated near the popular resort town of Great Yarmouth, Scratby offers a more tranquil and laid-back atmosphere, making it an appealing destination for those seeking a peaceful seaside getaway. The village boasts a long, sandy beach that stretches along the North Sea, ideal for beach walks, sunbathing, and fossil hunting. With a mix of traditional holiday parks, local shops, and cosy cafes, Scratby is a blend of rural charm and coastal beauty. Its proximity to the Norfolk Broads also makes it a great base for exploring the region's unique waterways and nature reserves.

SCRATBY ROAD

This detached residence is a true masterpiece, built in 2004. It has recently undergone a meticulous renovation to the highest standard, resulting in an exquisite design that exudes sophistication and grandeur. Sitting on over an acre (STMS) of maintained grounds, for those seeking privacy and



GROUND FLOOR

