



22 Pakefield Road, Pakefield

Guide Price £325,000

22 Pakefield Road

Pakefield, Lowestoft

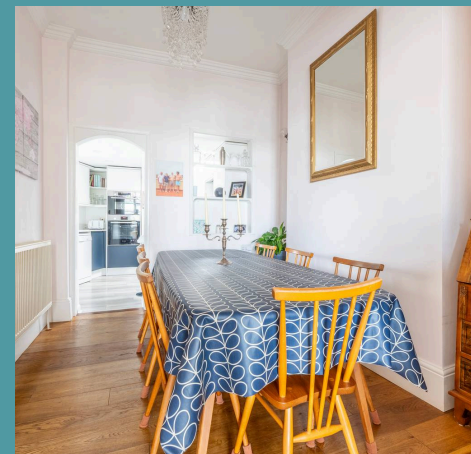
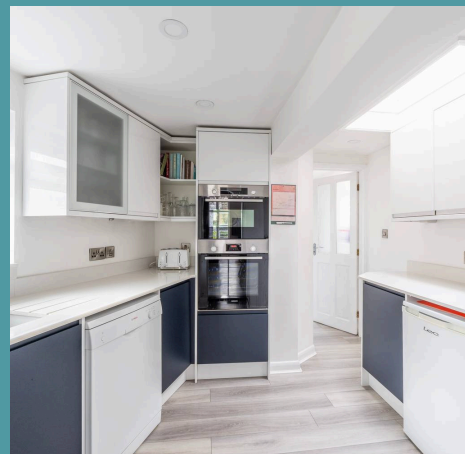
Guide price £325,000-£350,000. Just moments away from Kensington Gardens and the seafront, this magnificent five-bedroom residence presents an exceptional opportunity for those seeking a substantial family home in a prime location. With direct sea views at the front of the residence, this property offers a rare combination of stunning vistas and modern comforts. Don't miss the chance to acquire this home and experience all it has to offer.

Council Tax band: C

Tenure: Freehold

EPC Energy Efficiency Rating: D

EPC Environmental Impact Rating:





22 Pakefield Road

Pakefield, Lowestoft

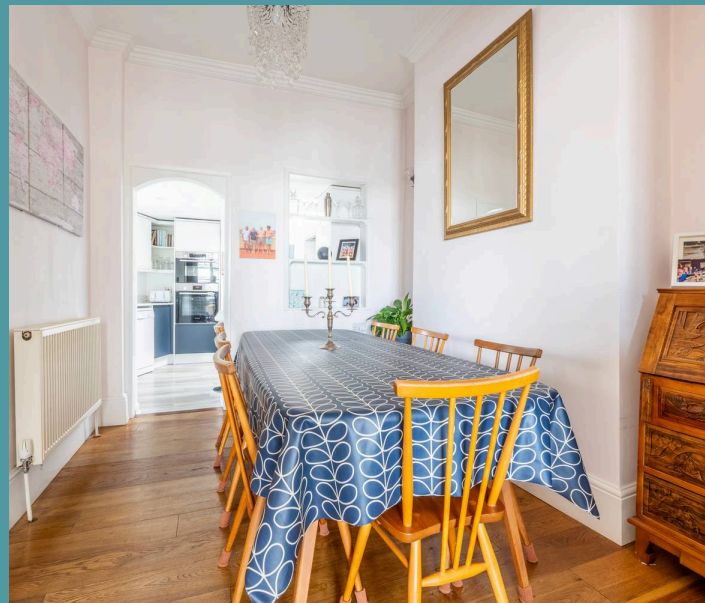
Guide price £325,000-£350,000. Just moments away from Kensington Gardens and the seafront, this magnificent five-bedroom residence presents an exceptional opportunity for those seeking a substantial family home in a prime location. With direct sea views at the front of the residence, this property offers a rare combination of stunning vistas and modern comforts. Don't miss the chance to acquire this home and experience all it has to offer.

Location

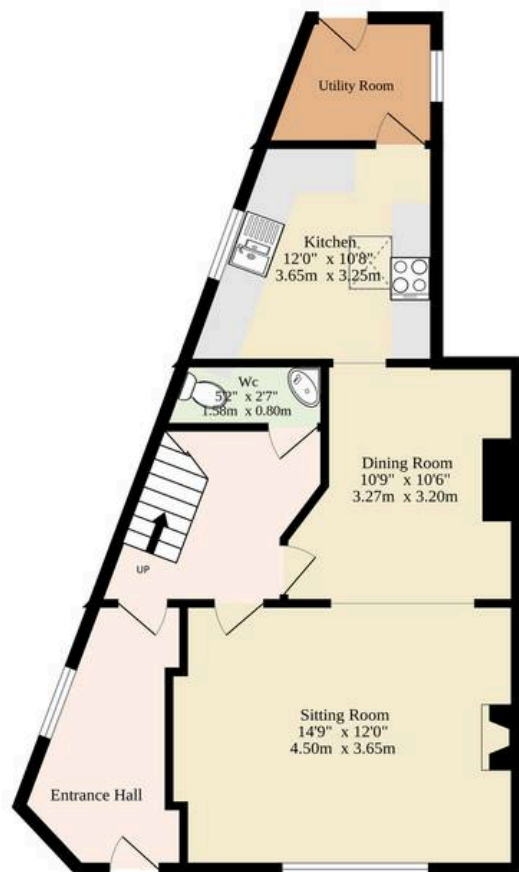
This property is situated in Pakefield, in the seaside town of Lowestoft. This wonderful seaside destination is steeped in history and offers a delightful blend of coastal allure and urban convenience. With its Blue Flag award-winning sandy beaches, Victorian seafront gardens and two charming piers, residents are treated to strolls along the shore and tranquil moments amidst nature's beauty. There are several schools in the area to suit all ages, a range of amenities including a Post Office, Bus Station and Train Station, which both run regular services to Norwich and plenty of shopping facilities and restaurants.

Pakefield Road

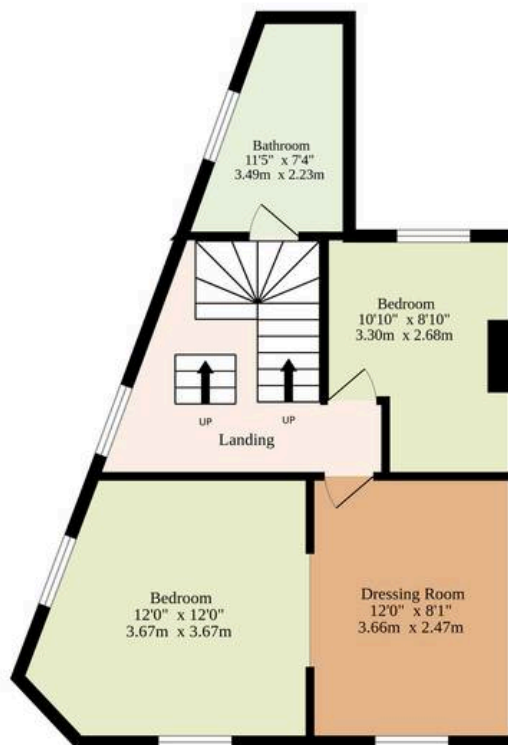
Spread across three floors, this superbly designed home boasts a modern aesthetic throughout, characterised by its bright and airy interior that creates a welcoming atmosphere at every turn. The ground floor features two spacious reception rooms, ideal for hosting family gatherings or entertaining guests, while the well-equipped



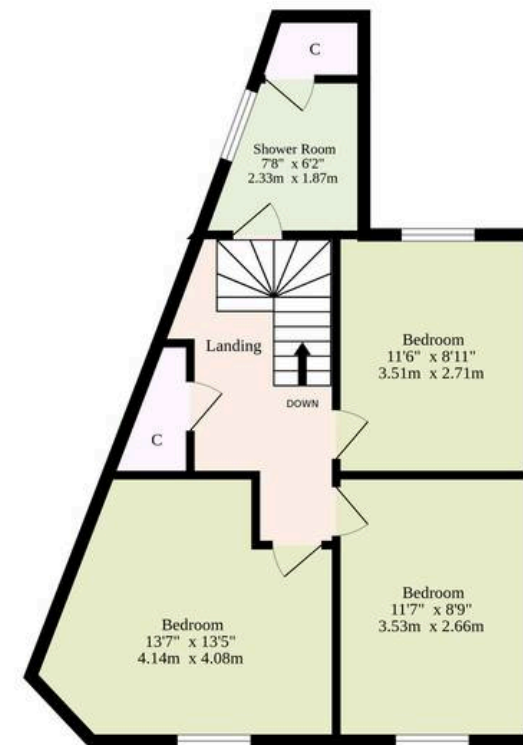
Ground Floor
488 sq.ft. (45.3 sq.m.) approx.



1st Floor
408 sq.ft. (37.9 sq.m.) approx.



2nd Floor
432 sq.ft. (40.1 sq.m.) approx.



Sqft Excluding Entrance Hall And Landings

TOTAL FLOOR AREA : 1328 sq.ft. (123.4 sq.m.) approx.

Whilst every attempt has been made to ensure the accuracy of the floorplan contained here, measurements of doors, windows, rooms and any other items are approximate and no responsibility is taken for any error, omission or mis-statement. This plan is for illustrative purposes only and should be used as such by any prospective purchaser. The services, systems and appliances shown have not been tested and no guarantee as to their operability or efficiency can be given.

Made with Metropix ©2025

