



1 Glencoe Court, Market Place, Dereham

£583 pcm

1 Glencoe Court, Market Place

Dereham

Presenting this exceptional commercial property located in a prime area, offering unparalleled business opportunities. Strategically situated near a large long-stay car park, this property guarantees high footfall, ensuring maximum visibility and accessibility for your business. It features a large office space, a kitchen, and a WC, providing all the essential amenities for your business needs.

Council Tax band: E





1 Glencoe Court, Market Place

Dereham

Presenting this exceptional commercial property located in a prime area, offering unparalleled business opportunities. Strategically situated near a large long-stay car park, this property guarantees high footfall, ensuring maximum visibility and accessibility for your business. It features a large office space, a kitchen, and a WC, providing all the essential amenities for your business needs.

Location

This property is ideally located on the Market Place in Dereham, a vibrant town offering a variety of amenities, including shops, restaurants, and local services. The property benefits from excellent visibility and accessibility, with a large long-stay car park nearby, ensuring high footfall. Situated in a prime area, it offers an excellent opportunity for businesses to thrive in a well-connected and bustling location.

Market Place Dereham

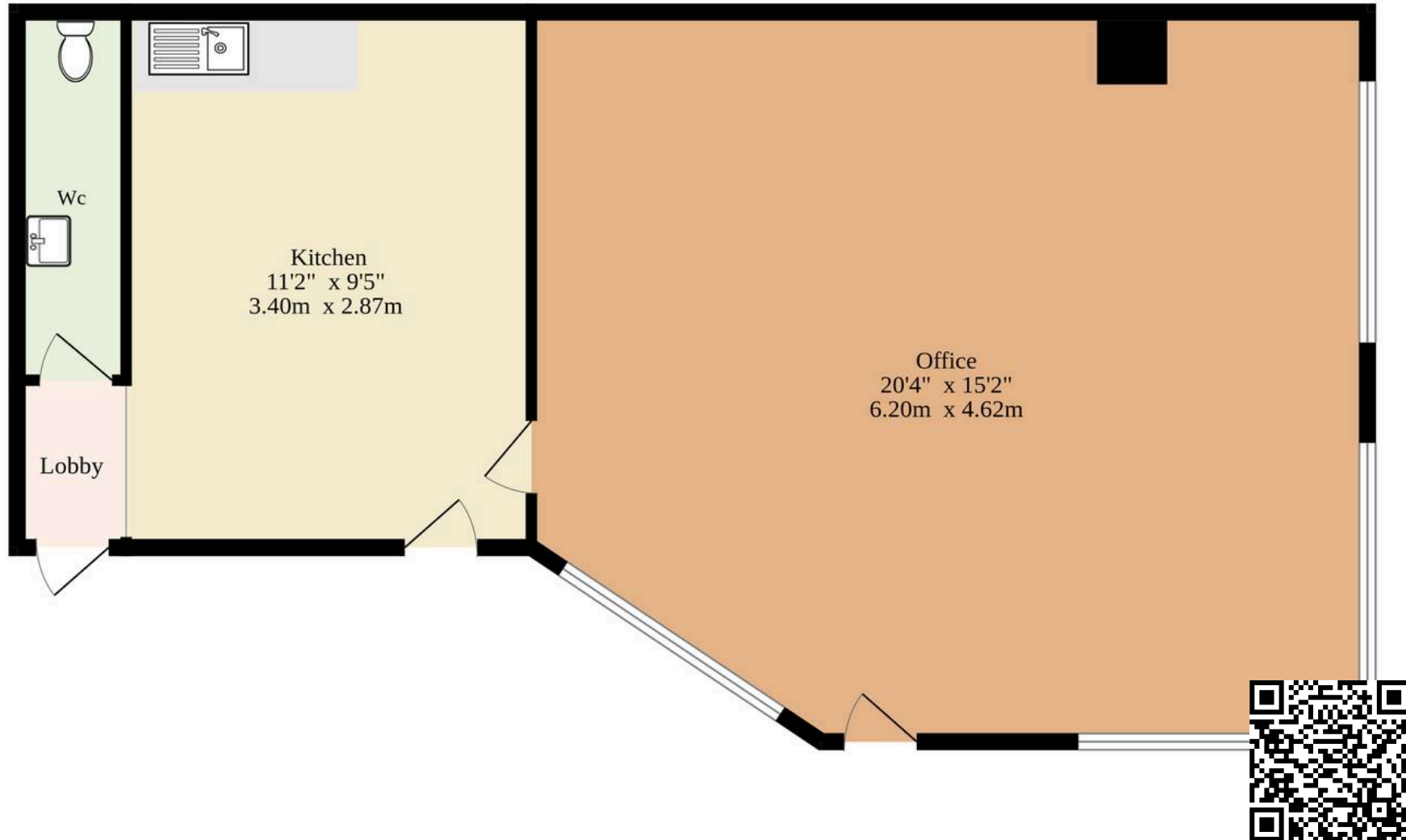
As you step inside, you are greeted by a spacious main suite, ideal for use as office space. The room features concrete flooring, strategically placed power points, and multiple windows that fill the space with natural light, creating a welcoming and productive environment for your team.

The property offers a flexible layout designed to accommodate a variety of business needs.

As you move through the space, you'll find a spacious kitchen area with a sink, perfect for daily use. A separate entrance lead



Ground Floor
445 sq.ft. (41.3 sq.m.) approx.



TOTAL FLOOR AREA : 445 sq.ft. (41.3 sq.m.) approx.

Whilst every attempt has been made to ensure the accuracy of the floorplan contained here, measurements of doors, windows, rooms and any other items are approximate and no responsibility is taken for any error, omission or mis-statement. This plan is for illustrative purposes only and should be used as such by any prospective purchaser. The services, systems and appliances shown have not been tested and no guarantee as to their operability or efficiency can be given.
Made with Metropix ©2025