



## Mill Cottage Love Lane, Sporle

In Excess of £775,000



# Mill Cottage Love Lane

Sporle, King's Lynn

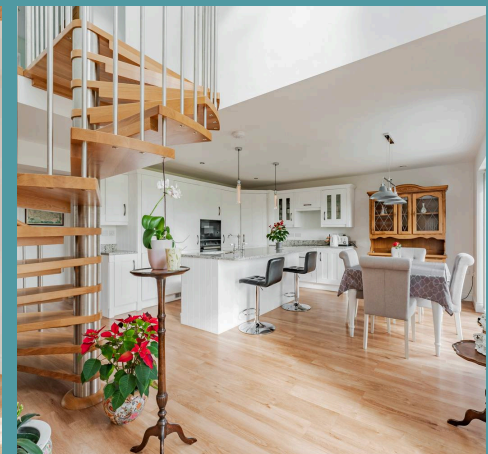
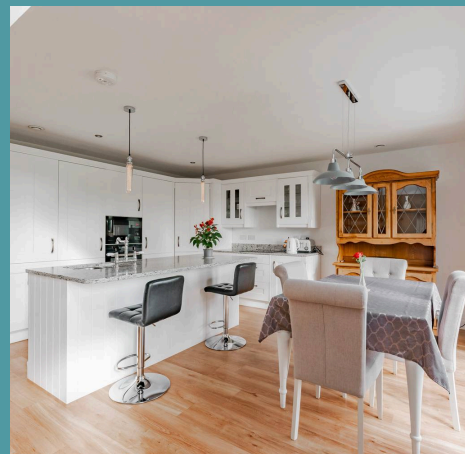
Welcome to this exquisite detached property in Sporle, offering a complete open-plan living space on the ground floor, ideal for entertaining and daily living. The first floor hosts four double bedrooms, including a luxurious master suite with a walk-in wardrobe, ensuite, and balcony with panoramic views. Outside, the sprawling garden with scenic field views provides tranquillity, while a carport and garage offer ample parking and storage options, making this home perfect for modern living in a charming village setting.

Council Tax band: TBD

Tenure: Freehold

EPC Energy Efficiency Rating: A

EPC Environmental Impact Rating: A







## Mill Cottage Love Lane

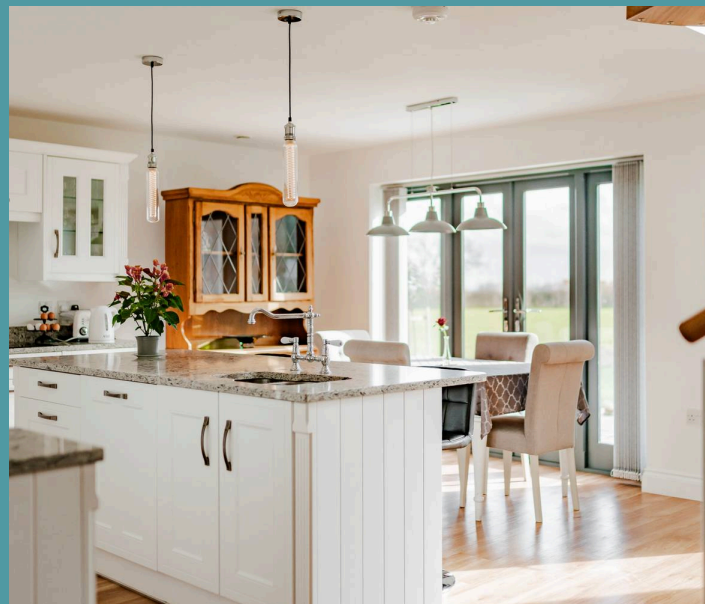
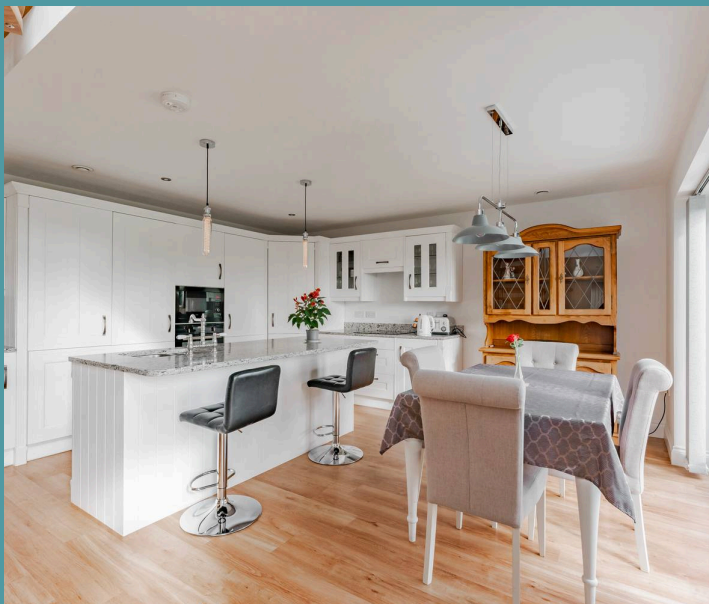
Sporle, King's Lynn

Welcome to this exquisite detached property in Sporle, offering a complete open-plan living space on the ground floor, ideal for entertaining and daily living. The first floor hosts four double bedrooms, including a luxurious master suite with a walk-in wardrobe, ensuite, and balcony with panoramic views. Outside, the sprawling garden with scenic field views provides tranquillity, while a carport and garage offer ample parking and storage options, making this home perfect for modern living in a charming village setting.

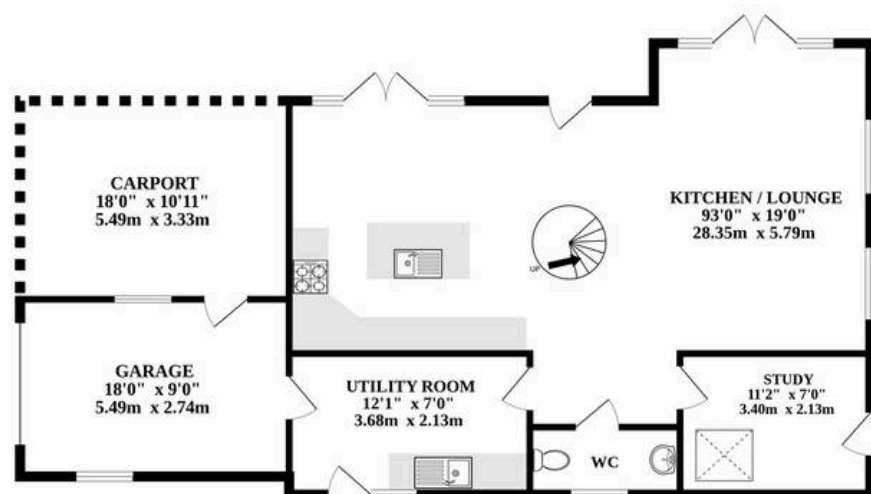
**Location**The village of Sporle is mainly built along one meandering main street and is situated 2 miles from Swaffham. Sporle has a post office located in a village shop, a pub, a school and two churches. It is located near the village of Little Dunham, in the Breckland District of Norfolk. The village sits just North-East of Swaffham and North of Necton, therefore within proximity to the A47, whereby you can access the city of Norwich only 31 miles away or Kings Lynn just 25 miles from Little Dunham. The village itself boasts two churches and is considered rural due to its stunning field views and countryside feel.

### Love Lane, Sporle

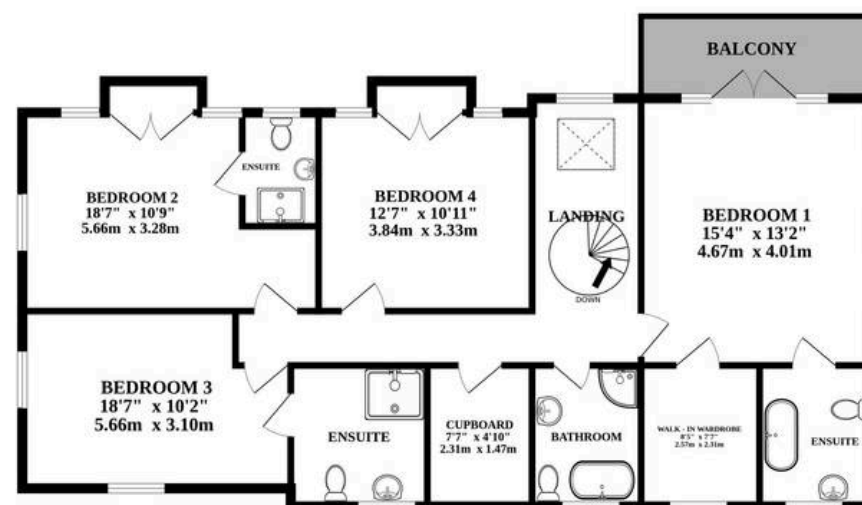
Welcome to this exquisite detached property located in the charming village of Sporle. Upon entry, you are greeted by a complete open-plan living space, offering ample room for your chosen furnishings to fill the lounge area. The dedicated kitchen and dining space, adorned with bright kitchen cupboards and built-in appliances, are complemented by French doors that flood the area



GROUND FLOOR



1ST FLOOR



Whilst every attempt has been made to ensure the accuracy of the floorplan contained here, measurements of doors, windows, rooms and any other items are approximate and no responsibility is taken for any error, omission or mis-statement. This plan is for illustrative purposes only and should be used as such by any prospective purchaser. The services, systems and appliances shown have not been tested and no guarantee as to their operability or efficiency can be given.  
Made with Metropix ©2024

