



6 Grebe Drive, Sprowston
£227,000

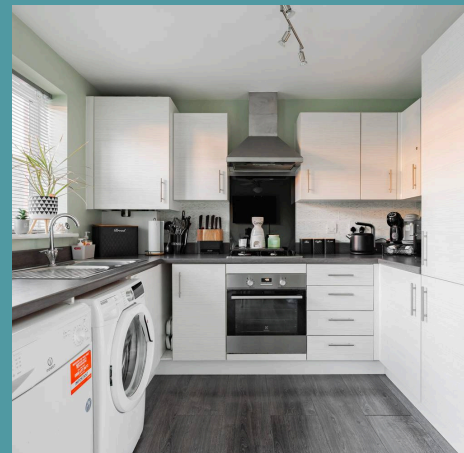
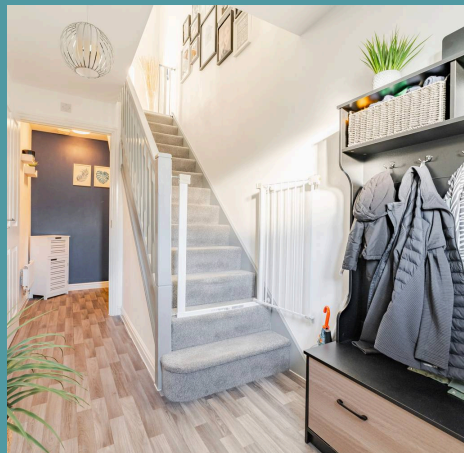
6 Grebe Drive

Sprowston, Norwich

Available under the 80% Affordable Home Scheme, this modern mid-terrace property offers first-time buyers a fantastic opportunity to step onto the property ladder at a discounted market value. The home features a spacious entrance hall with a WC, a bright front-facing sitting room, and an open-plan kitchen-diner with sleek finishes and patio doors leading to the enclosed rear garden. Upstairs includes three well-sized bedrooms, a contemporary family bathroom, and two allocated parking spaces accessed via the garden.

Location

Situated on the outskirts of Norwich at Cordwainer Close, this property offers the best of both worlds. Enjoy the peace and quiet of a residential area while still having easy access to the excitement of the city. The prime location boasts excellent transport links, with the NDR nearby for convenient commuting. Daily errands are a breeze with a Tesco Superstore and Lidl within easy reach. Families will love the abundance of schooling options, while the local parks provides a space for outdoor fun. For those seeking relaxation, a nearby garden centre offers a haven for plant lovers and The White House Farm entices with strawberry picking in the right season, a charming cafe and even beauty treatments for some well-deserved self-care.





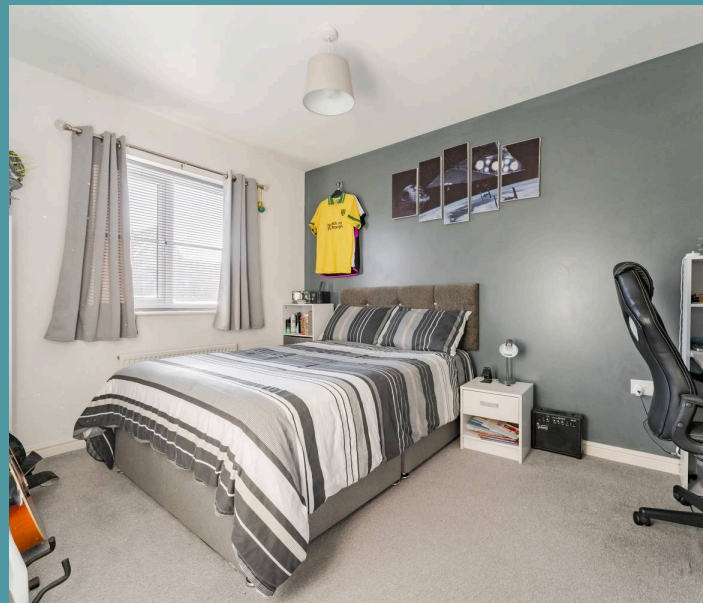
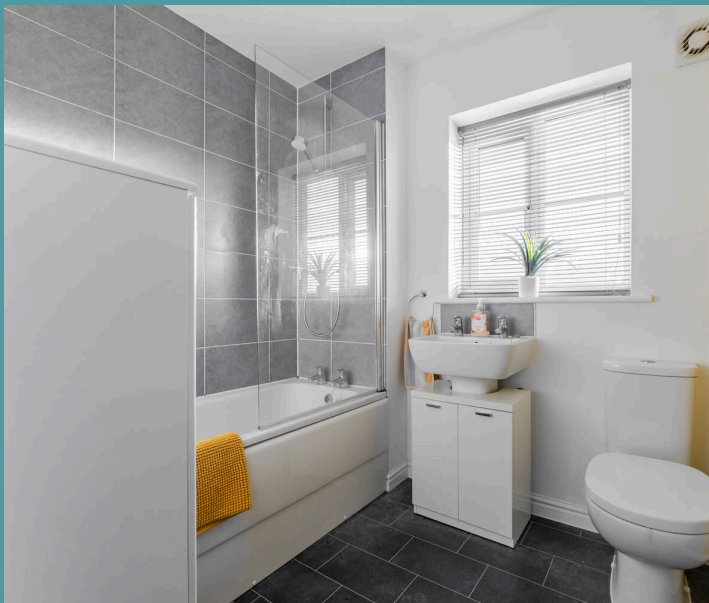
6 Grebe Drive

Sprowston, Norwich

Grebe Drive

This stylish and modern mid-terrace home is offered through the 80% Affordable Home Scheme, designed to help buyers take their first step onto the property ladder. Upon entering, you're greeted by a spacious entrance hall, providing access to a convenient WC, perfect for guests or day-to-day use. The sitting room is generously sized and features a large front-facing window, flooding the space with natural light and creating a bright and welcoming environment.

At the rear of the home, the open-plan kitchen and dining area showcases a modern design with sleek cabinetry, stylish splashbacks and space for appliances. The room flows beautifully, with patio doors leading to the enclosed rear garden, making it an ideal spot for entertaining or enjoying family meals. Upstairs, the property offers three well-sized bedrooms, including a spacious main bedroom, all complemented by a contemporary family bathroom with a polished, modern suite.





6 Grebe Drive

Sprowston, Norwich

The fully enclosed rear garden provides a private outdoor space, complete with a lawn, patio, and a handy timber shed for storage. A rear gate gives access to two allocated off-road parking spaces, adding to the home's practicality. Designed for modern living and easy maintenance, this property is perfect for buyers seeking an affordable first home.

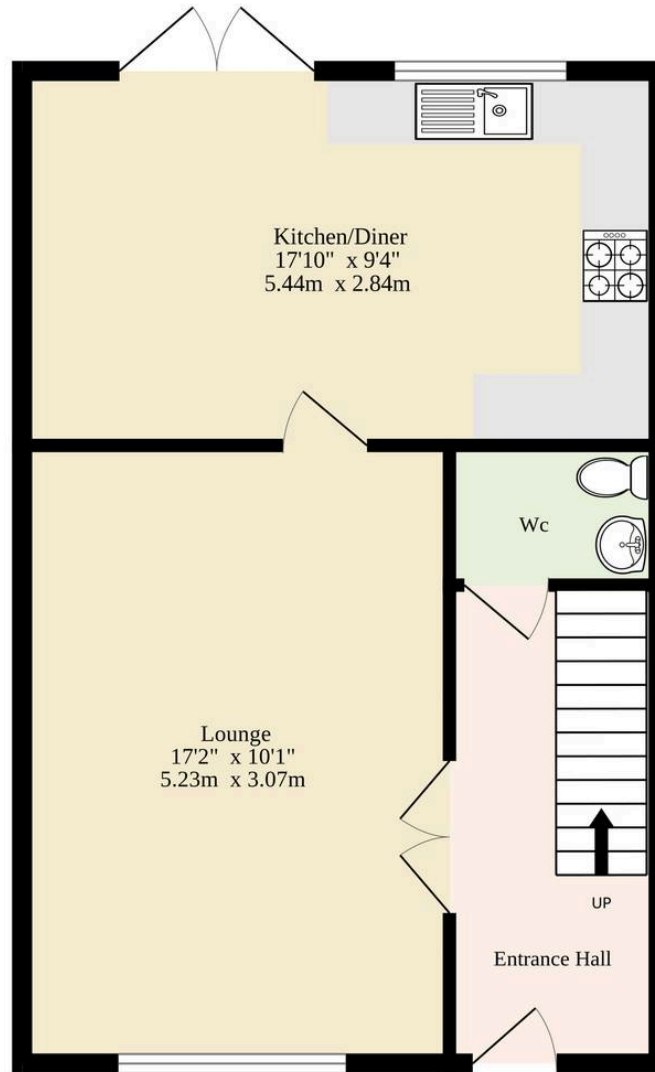
Agents Note

This property is classed as an affordable home sold at 80% discount of market value, with purchasing priority being given to applicants with a local connection to Broadland (current residents, those that work in Broadland or have a close family connection).

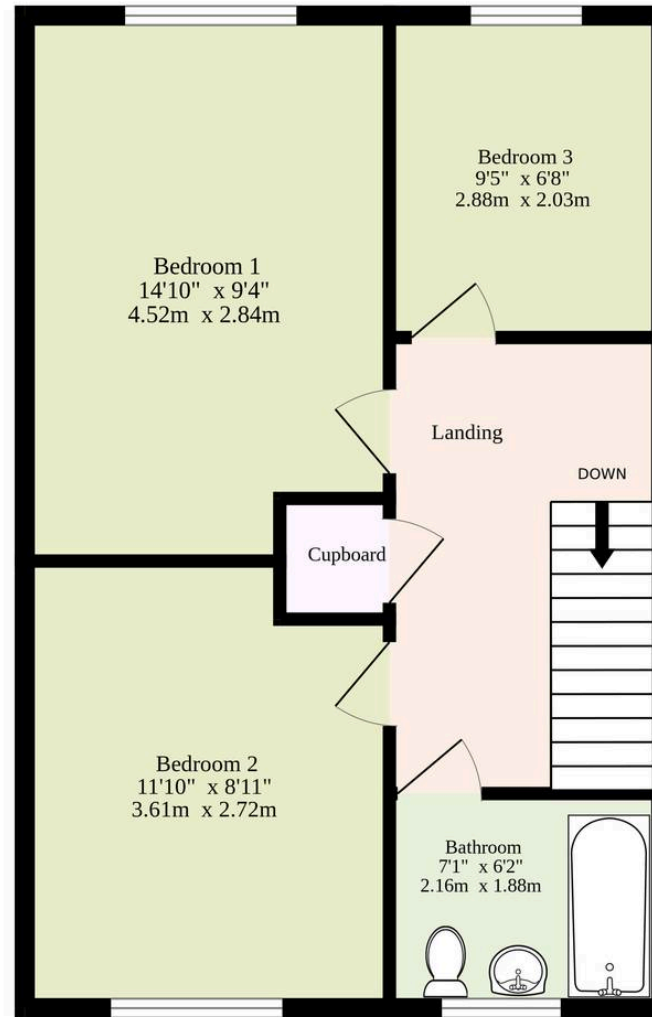
All applicants will need to register and be approved by Help to Buy South, the link for registration of applicants is:- <https://www.helptobuyagent3.org.uk/> Applicants will need to register for Shared Ownership /Rent to Buy (NOT Equity Loan) For any questions, please contact us by phone or email and we will explain further.



Ground Floor
407 sq.ft. (37.8 sq.m.) approx.



1st Floor
409 sq.ft. (38.0 sq.m.) approx.



Excluding Wc

TOTAL FLOOR AREA : 816 sq.ft. (75.8 sq.m.) approx.

Whilst every attempt has been made to ensure the accuracy of the floorplan contained here, measurements of doors, windows, rooms and any other items are approximate and no responsibility is taken for any error, omission or mis-statement. This plan is for illustrative purposes only and should be used as such by any prospective purchaser. The services, systems and appliances shown have not been tested and no guarantee as to their operability or efficiency can be given.
Made with Metropix ©2025

