

## 18 Silver Street, Norwich

£220,000 Freehold

An exceptional opportunity for first-time buyers/investors. Located in the sought-after north city area, this property boasts charm and city convenience. The property has the potential to achieve £960pcm, generating a 5.2% yield. Offering three bedrooms, a porch entrance, sizeable lounge and a low-maintenance courtyard garden. Contact our Norwich office for more information!



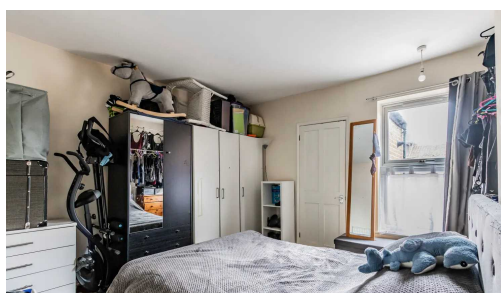
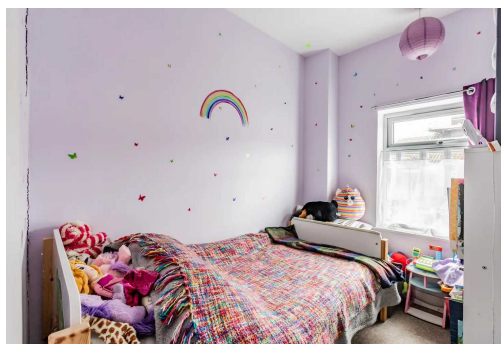
Silver Street in NR3, Norwich, boasts historical charm and city convenience. The streets are adorned with local shops, boutiques, and a vibrant community atmosphere. Residents enjoy easy access to amenities, public transportation, and nearby parks, creating a well-rounded and inviting area with a unique character.



## AGENTS NOTE

We understand the property will be sold freehold and connected to all mains services.

Council tax band - B.





Introducing an exceptional opportunity for first-time buyers and investors alike, this remarkable property is located in the highly sought-after north city area.

Entering the property via a porch into the spacious lounge. This space offers a comfortable area to relax and unwind in with a door leading to a well-equipped kitchen/diner. To the rear of the property is a family bathroom.

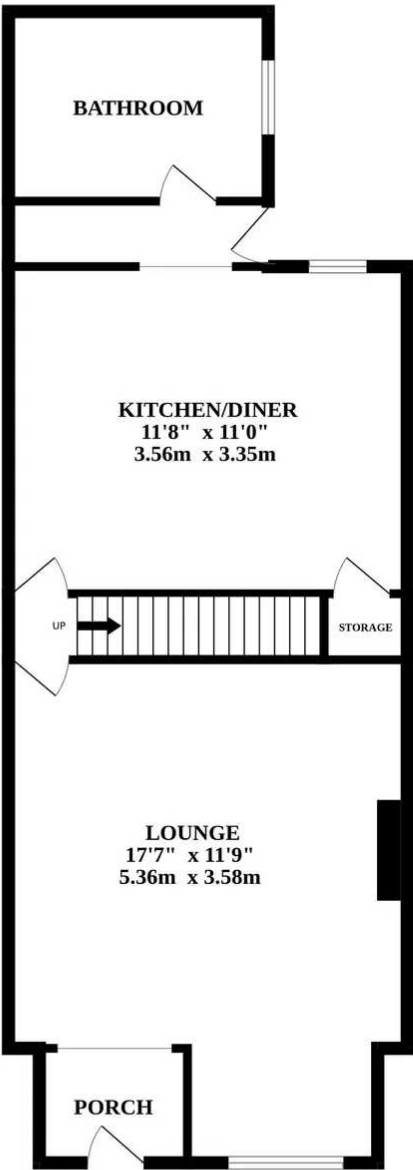
Ascending to the first floor, you can access three inviting bedrooms, each offering tranquillity and comfort. The master bedroom is located to the front aspect with built-in wardrobes. Two additional bedrooms provide versatile spaces that can be tailored to suit your unique needs, whether it be a home office or a cosy guest room.

The private courtyard garden offers an intimate outdoor space for relaxation and leisure. Ideal for hosting gatherings or simply enjoying the sun, this non-bisected garden ensures privacy and serenity.

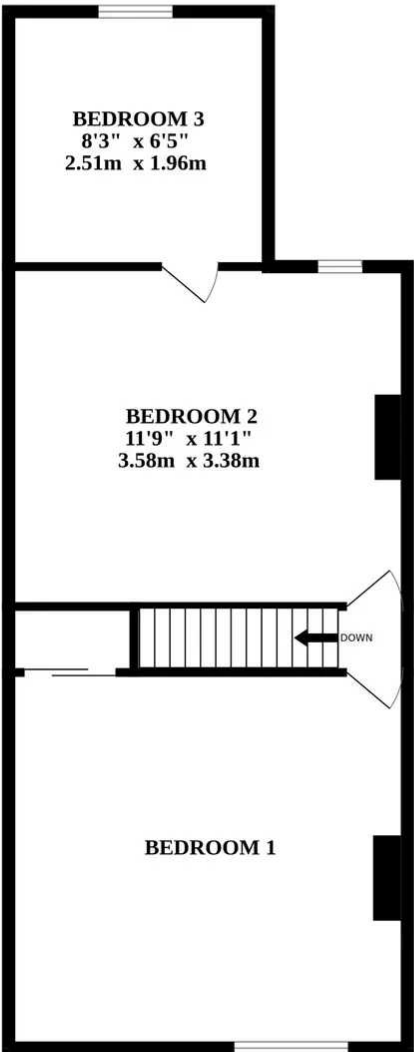
Additional benefits of this residence include close proximity to local amenities such as shops, schools, and transport links.



GROUND FLOOR



1ST FLOOR



Whilst every attempt has been made to ensure the accuracy of the floorplan contained here, measurements of doors, windows, rooms and any other items are approximate and no responsibility is taken for any error, omission or mis-statement. This plan is for illustrative purposes only and should be used as such by any prospective purchaser. The services, systems and appliances shown have not been tested and no guarantee as to their operability or efficiency can be given.  
Made with Metropix ©2024

