

Penthouse 1-2, 25 Bridge Road, Great Yarmouth

£270,000 Share of Freehold

Minors & Brady are delighted to present two exceptional penthouse apartments that bring together sophisticated design, stunning river views, and an enviable coastal location. Set within a contemporary riverside development, each penthouse offers a spacious and stylish interior layout, a private balcony overlooking the River Bure, and carefully considered finishes throughout. These homes provide a rare opportunity to enjoy luxury living in a well-connected setting, with easy access to local amenities, green spaces, and the beach. With their elevated position and sweeping outlook, the penthouses at Bridge Road offer a unique living experience, perfect for those seeking both comfort and quality in a sought-after seaside location.

Council Tax band: TBD

Tenure: Share of Freehold

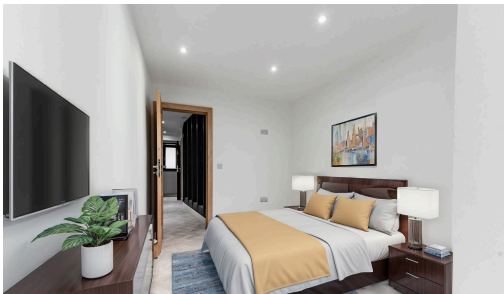
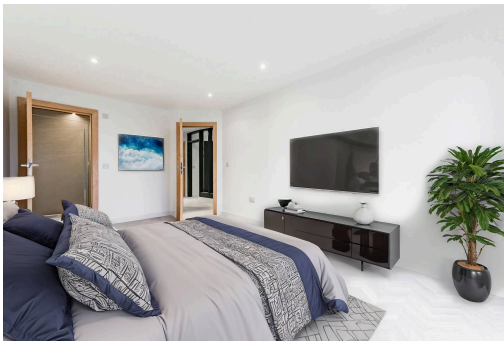
Minors & Brady are delighted to present two exceptional penthouse apartments that bring together sophisticated design, stunning river views, and an enviable coastal location. Set within a contemporary riverside development, each penthouse offers a spacious and stylish interior layout, a private balcony overlooking the River Bure, and carefully considered finishes throughout. These homes provide a rare opportunity to enjoy luxury living in a well-connected setting, with easy access to local amenities, green spaces, and the beach. With their elevated position and sweeping outlook, the penthouses at Bridge Road offer a unique living experience, perfect for those seeking both comfort and quality in a sought-after seaside location.

Location

Bridge Road, located in the vibrant coastal town of Great Yarmouth, offers a convenient and well-connected setting for residents. Situated in the heart of this bustling seaside town, Bridge Road provides easy access to an array of amenities, including local shops, restaurants, schools, and recreational facilities. Great



Minors & Brady are delighted to present two exceptional penthouse apartments that bring together sophisticated design, stunning river views, and an enviable coastal location. Set within a contemporary riverside development, each penthouse offers a spacious and stylish interior layout, a private balcony overlooking the River Bure, and carefully considered finishes throughout. These homes provide a rare opportunity to enjoy luxury living in a well-connected setting, with easy access to local amenities, green spaces, and the beach. With their elevated position and sweeping outlook, the penthouses at Bridge Road offer a



Minors & Brady are delighted to present two exceptional penthouse apartments that bring together sophisticated design, stunning river views, and an enviable coastal location. Set within a contemporary riverside development, each penthouse offers a spacious and stylish interior layout, a private balcony overlooking the River Bure, and carefully considered finishes throughout. These homes provide a rare opportunity to enjoy luxury living in a well-connected setting, with easy access to local amenities, green spaces, and the beach. With their elevated position and sweeping outlook, the penthouses at Bridge Road offer a unique living experience, perfect for those seeking both comfort and quality in a sought-after seaside location.

Location

Bridge Road, located in the vibrant coastal town of Great Yarmouth, offers a convenient and well-connected setting for residents. Situated in the heart of this bustling seaside town, Bridge Road provides easy access to an array of amenities, including local shops, restaurants, schools, and recreational facilities. Great Yarmouth is celebrated for its picturesque coastline, offering pristine sandy beaches and stunning seafront promenades, perfect for leisurely strolls and enjoying the sea breeze. The town is rich in history and culture, with numerous historical landmarks and attractions, including the iconic Britannia Pier and the Sea Life Centre. This location benefits from excellent transportation links, ensuring swift commutes to nearby towns and cities, making Bridge Road an ideal spot for those looking to embrace coastal living with urban convenience.

Bridge Road

Thoughtfully designed to maximise space and light, the open-plan kitchen, dining, and living area forms the heart of each apartment. Ideal for modern lifestyles, the layout allows for easy flow between everyday living and entertaining. Floor-to-ceiling doors open onto a private balcony, perfect for morning coffee or evening unwinding with far-reaching views of the River Bure.

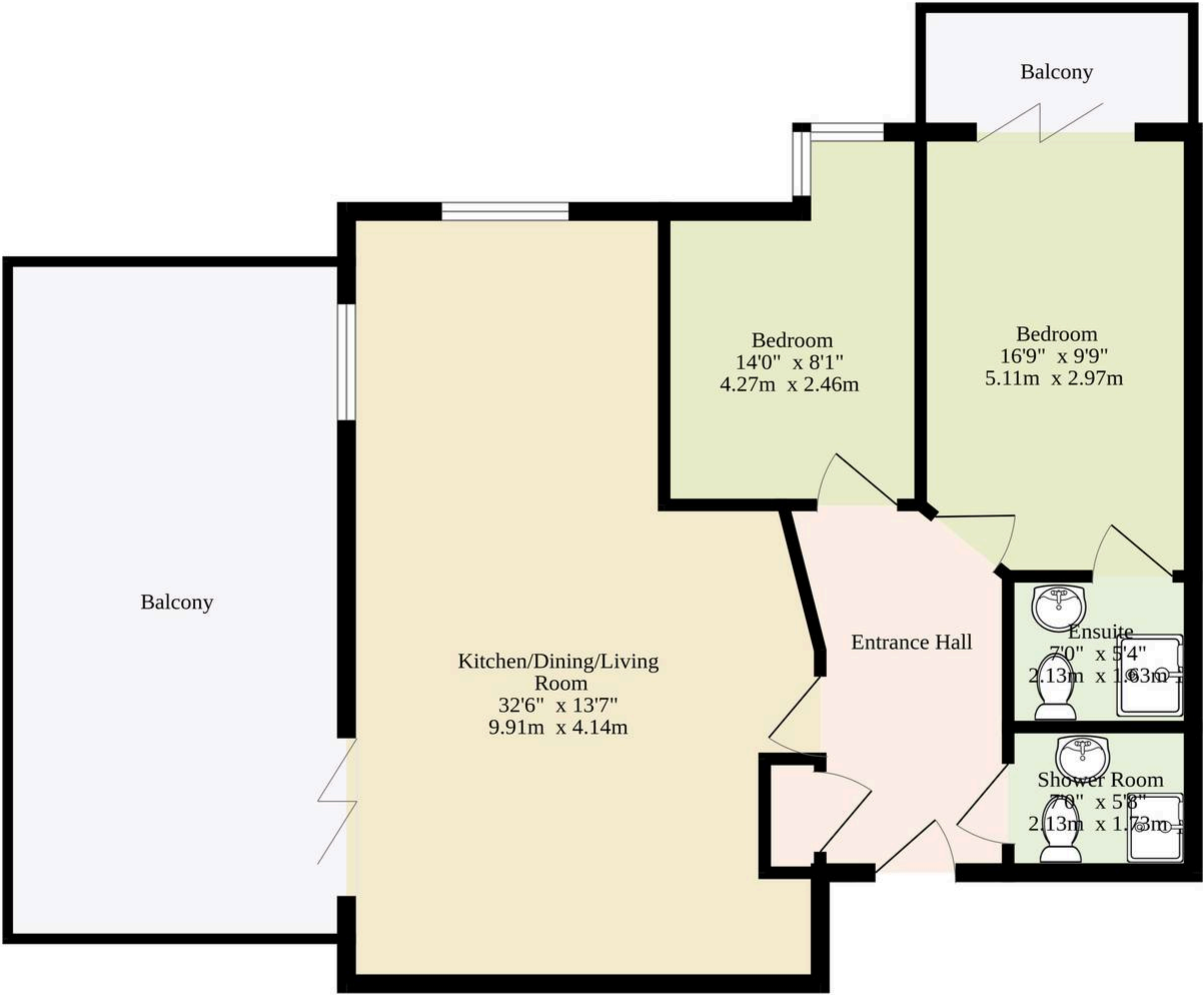
Both apartments feature two spacious double bedrooms, designed with comfort and privacy in mind. A sleek, contemporary shower room with a three-piece suite serves both residents and guests with ease.

Additional features include allocated parking, proximity to the town centre and train station, and easy access to the beach, riverside walks, and surrounding natural beauty. These penthouses strike the perfect balance between convenience and tranquillity, offering coastal calm with everything you need close at hand.

Agents notes



Ground Floor
806 sq.ft. (74.9 sq.m.) approx.



Sqft Does Not Include The Balcony'S

TOTAL FLOOR AREA : 806sq.ft. (74.9 sq.m.) approx.

Whilst every attempt has been made to ensure the accuracy of the floorplan contained here, measurements of doors, windows, rooms and any other items are approximate and no responsibility is taken for any error, omission or mis-statement. This plan is for illustrative purposes only and should be used as such by any prospective purchaser. The services, systems and appliances shown have not been tested and no guarantee as to their operability or efficiency can be given.
Made with Metropix ©2025

You can include any text here. The text can be modified upon generating your brochure.

You can include any text here. The text can be modified upon generating your brochure.

