



5 Greenborough Close, Norwich
£350,000

5 Greenborough Close

Norwich, Norwich

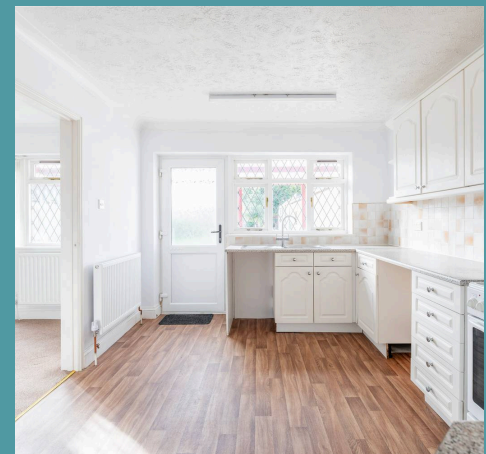
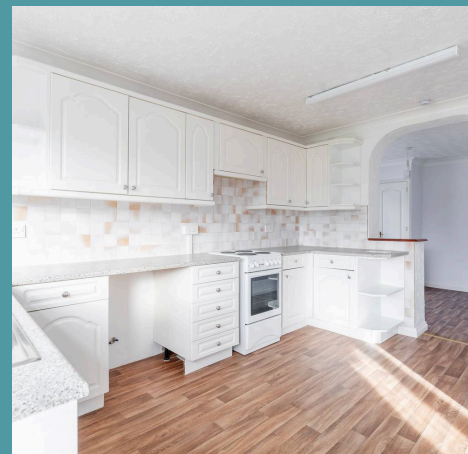
Presenting this charming detached bungalow that is positioned down the end of a cul-de-sac, constructed by Hackett Ltd in 1956. With no onward chain and vacant possession on offer, this property presents a seamless transition for its new owners, promising immediate occupancy for those ready to embrace a new chapter. Don't miss the opportunity to make this residence your own and experience a lifestyle of comfort and convenience on a single floor.

Council Tax band: C

Tenure: Freehold

EPC Energy Efficiency Rating: D

EPC Environmental Impact Rating:





5 Greenborough Close

Norwich, Norwich

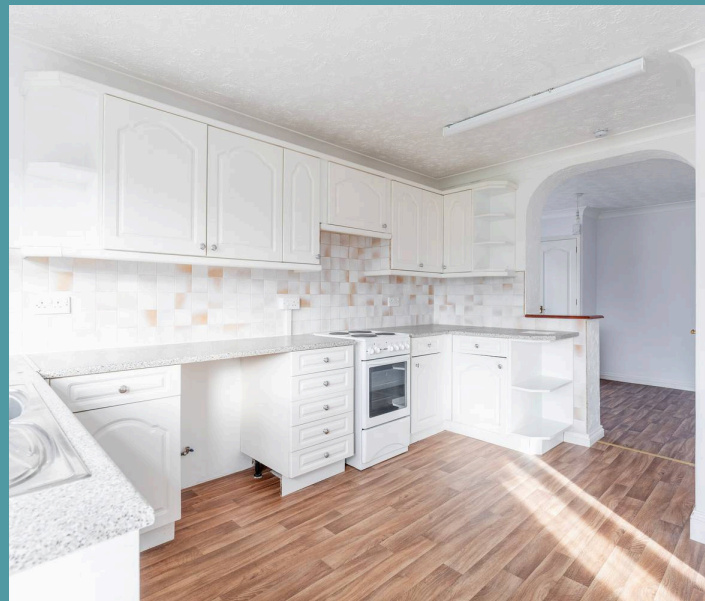
Presenting this charming detached bungalow that is positioned down the end of a cul-de-sac, constructed by Hackett Ltd in 1956. With no onward chain and vacant possession on offer, this property presents a seamless transition for its new owners, promising immediate occupancy for those ready to embrace a new chapter. Don't miss the opportunity to make this residence your own and experience a lifestyle of comfort and convenience on a single floor.

LOCATION

Norwich NR7 is a residential area in the eastern part of Norwich, including neighbourhoods like Thorpe St. Andrew. It offers a mix of traditional and modern housing and is known for its riverside location along the River Yare. The district has good local amenities, schools, and parks, along with easy access to the A47 road and public transport links to central Norwich. NR7 also features nearby green spaces like Whitlingham Country Park, providing opportunities for outdoor activities. It combines urban and natural environments, making it a desirable area to live.

GREENBOROUGH CLOSE

The bungalow has been thoughtfully extended to enhance its living space, with a rear extension completed in 1994 according to building regulations with planning permission in place. The welcoming sitting room is filled with an abundance of natural light streaming in through the French doors that open onto the garden. Its carefully designed layout creates an atmosphere conducive



Ground Floor

