



Springfield Church Street, Northrepps
£325,000

Springfield Church Street

Northrepps, Cromer

Offering a balance of well-kept outdoor space and a manageable living interior, this detached bungalow is a fantastic opportunity in a peaceful village setting. A long driveway leads to a secure garage, while the appealing frontage is framed by manicured hedging and a neatly maintained lawn. Inside, the property features two spacious double bedrooms, a modern shower room with a separate WC, and a stylish, well-equipped kitchen. With a comfortable sitting room opening onto a private, beautifully maintained garden—not overlooked in any way—this home also offers excellent potential to extend without sacrificing outdoor space.

Council Tax band: C

Tenure: Freehold





Springfield Church Street

Northrepps, Cromer

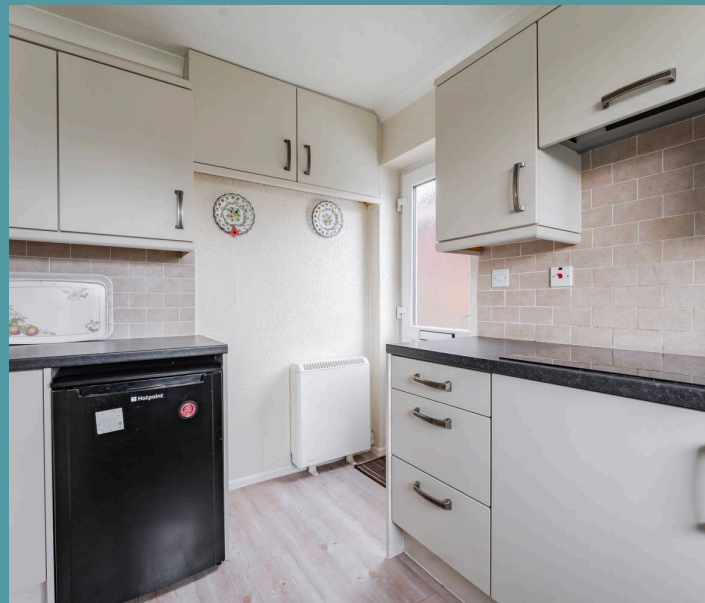
Offering a balance of well-kept outdoor space and a manageable living interior, this detached bungalow is a fantastic opportunity in a peaceful village setting. A long driveway leads to a secure garage, while the appealing frontage is framed by manicured hedging and a neatly maintained lawn. Inside, the property features two spacious double bedrooms, a modern shower room with a separate WC, and a stylish, well-equipped kitchen. With a comfortable sitting room opening onto a private, beautifully maintained garden—not overlooked in any way—this home also offers excellent potential to extend without sacrificing outdoor space.

The Location

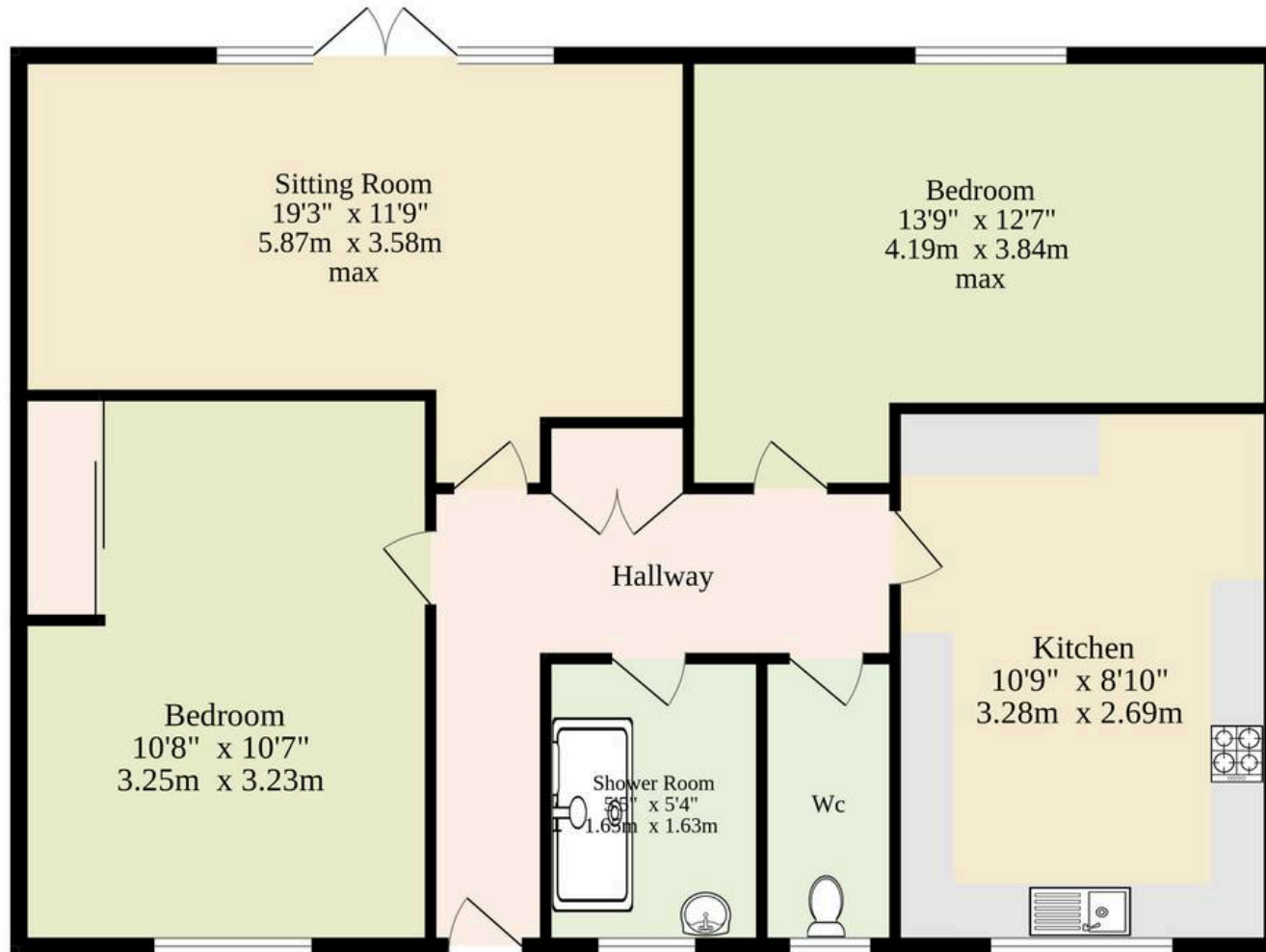
Set in the charming village of Northrepps, Springfield, offers an idyllic location for those seeking peaceful village living. This area benefits from regular bus routes, providing easy access to Northrepps, where you'll find amenities such as The Foundry Arms and Northrepps village hall, fostering a sense of community and social interaction. For those yearning for the coastal life, Northrepps offers proximity to the town of Cromer, known for its beach and atmosphere.

In Cromer, you'll find further amenities, shopping options and a train station, making it an ideal choice for those who need to commute for work or leisure. Cromer also provides a range of excellent schooling options, ensuring a well-rounded family-friendly location. This village and its proximity to Cromer truly offer the best of both worlds.

Springfield, Church Street



Ground Floor
869 sq.ft. (80.7 sq.m.) approx.



TOTAL FLOOR AREA : 869 sq.ft. (80.7 sq.m.) approx.

Whilst every attempt has been made to ensure the accuracy of the floorplan contained here, measurements of doors, windows, rooms and any other items are approximate and no responsibility is taken for any error, omission or mis-statement. This plan is for illustrative purposes only and should be used as such by any prospective purchaser. The services, systems and appliances shown have not been tested and no guarantee as to their operability or efficiency can be given.

Made with Metropix ©2025