



8 Fleetwood Drive, Norwich

Guide Price £270,000

8 Fleetwood Drive

Norwich, Norwich

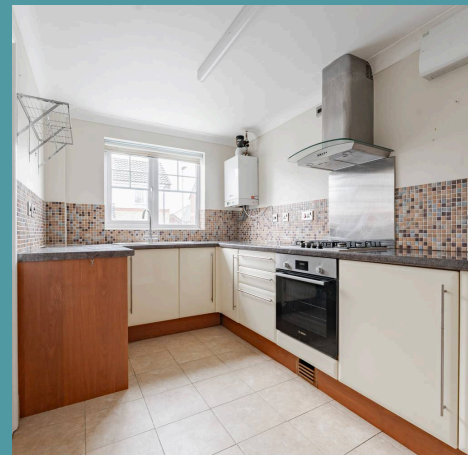
Guide Price £270,000 - £280,000. This two-bedroom home is the perfect first purchase, offering great space and a prime location. With off-road parking and bright, airy living areas, it's a welcoming property from the start. The spacious kitchen has ample storage and a front-facing window, while the large sitting room is perfect for dining or relaxing. Upstairs, two generous bedrooms and a modern bathroom provide comfort. The private, enclosed rear garden is ideal for families, pets, or anyone who enjoys outdoor living.

Council Tax band: B

Tenure: Freehold

EPC Energy Efficiency Rating: C

EPC Environmental Impact Rating: C





8 Fleetwood Drive

Norwich, Norwich

Guide Price £270,000 - £280,000. This two-bedroom home is the perfect first purchase, offering great space and a prime location. With off-road parking and bright, airy living areas, it's a welcoming property from the start. The spacious kitchen has ample storage and a front-facing window, while the large sitting room is perfect for dining or relaxing. Upstairs, two generous bedrooms and a modern bathroom provide comfort. The private, enclosed rear garden is ideal for families, pets, or anyone who enjoys outdoor living.

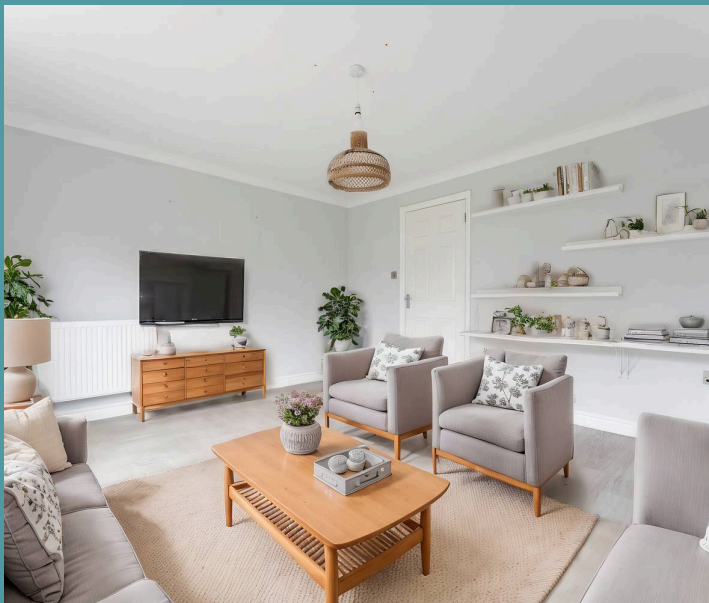
The Location

Located in Fleetwood Drive in the desirable Dussindale area near the vibrant Thorpe community, this property offers a city-outskirted lifestyle. Residents can enjoy leisurely walks along the scenic River Yare while being close to an array of amenities, including cafes, shopping options such as Sainsbury's and excellent schooling choices for all ages.

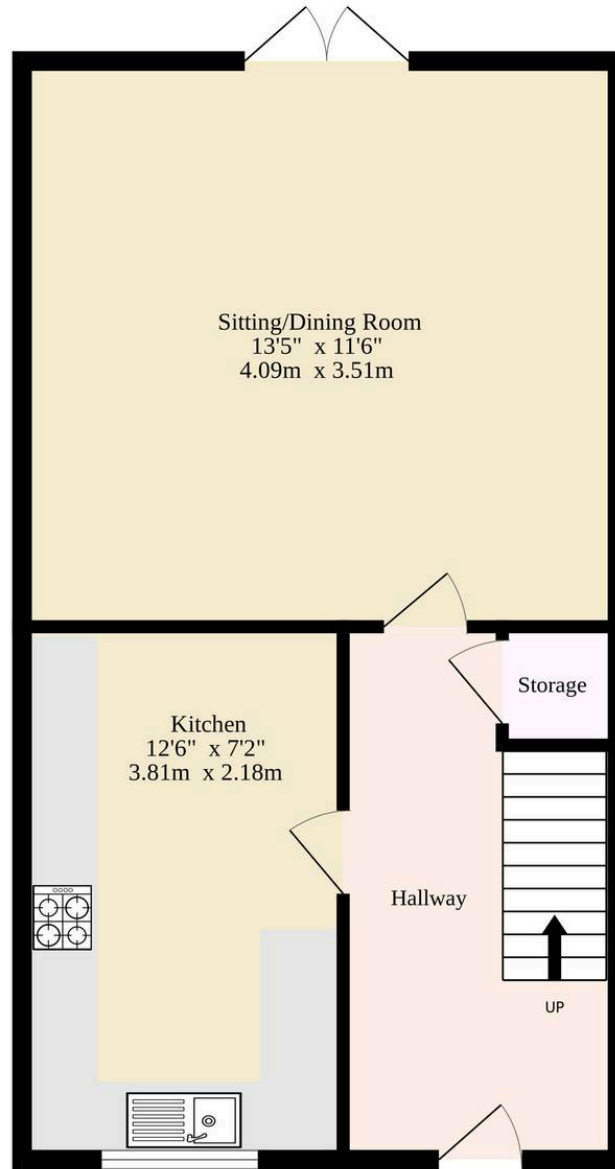
Commuters will benefit from easy access to both the NDR (Northern Distributor Road) and the A47, providing smooth connections to various destinations. For added convenience, reliable bus links to the city make daily travel straightforward and stress-free.

Association Way perfectly balances practicality and modern living, making it a superb choice for families, professionals, and anyone seeking a well-connected home in the sought-after Thorpe area.

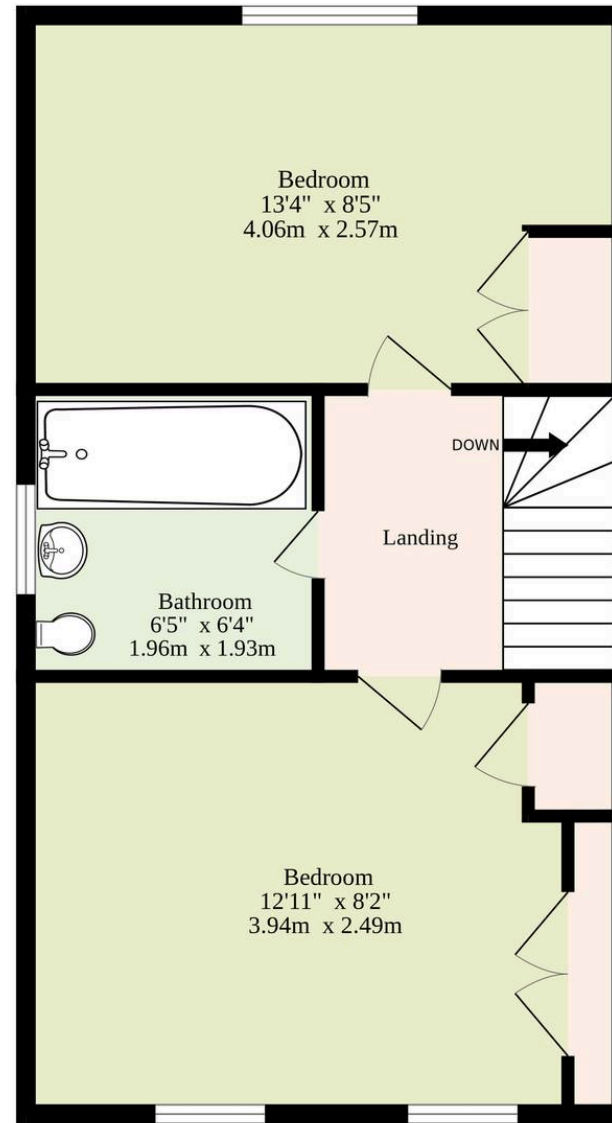
Fleetwood Drive



Ground Floor
319 sq.ft. (29.6 sq.m.) approx.



1st Floor
296 sq.ft. (27.5 sq.m.) approx.



TOTAL FLOOR AREA : 615 sq.ft. (57.1 sq.m.) approx.

Whilst every attempt has been made to ensure the accuracy of the floorplan contained here, measurements of doors, windows, rooms and any other items are approximate and no responsibility is taken for any error, omission or mis-statement. This plan is for illustrative purposes only and should be used as such by any prospective purchaser. The services, systems and appliances shown have not been tested and no guarantee as to their operability or efficiency can be given.
Made with Metropix ©2025