



30 Woodlands Drive, Thetford
£280,000

30 Woodlands Drive

Thetford, Thetford

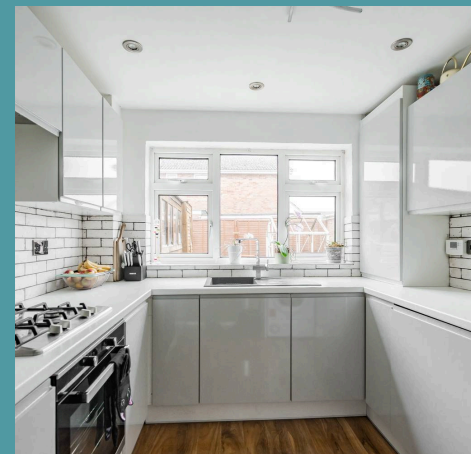
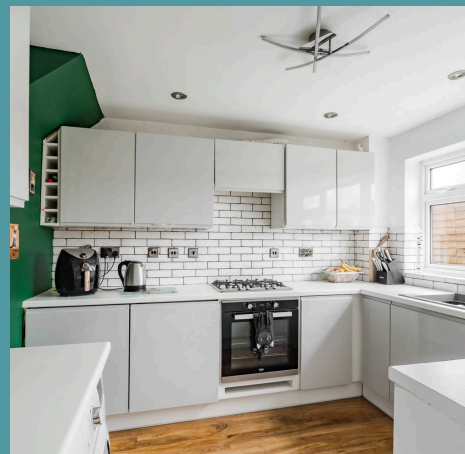
Occupying a generous corner plot in well-connected Thetford area, this spacious home offers both practicality and potential in a sought-after location. The surrounding area provides excellent transport links, local amenities, and green spaces, ensuring convenience for families and professionals alike. Inside, the property boasts a bright and inviting layout, with an open-plan living, dining, and kitchen area that seamlessly connects to the rear garden. Upstairs, three well-proportioned bedrooms offer flexibility, whether for family life or a dedicated home office. With off-road parking, a detached garage, and a wraparound garden, this home presents a fantastic opportunity to enjoy both indoor comfort and outdoor space.

Council Tax band: C

Tenure: Freehold

EPC Energy Efficiency Rating: C

EPC Environmental Impact Rating: C





30 Woodlands Drive

Thetford, Thetford

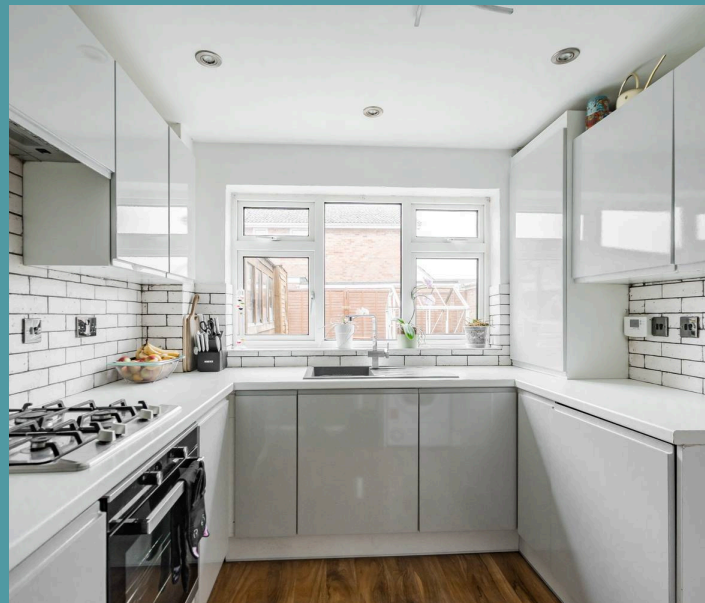
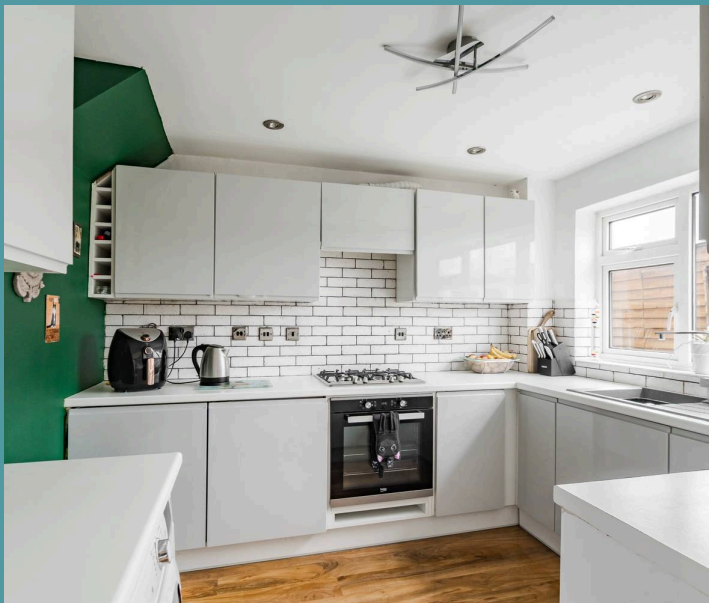
Occupying a generous corner plot in well-connected Thetford area, this spacious home offers both practicality and potential in a sought-after location. The surrounding area provides excellent transport links, local amenities, and green spaces, ensuring convenience for families and professionals alike. Inside, the property boasts a bright and inviting layout, with an open-plan living, dining, and kitchen area that seamlessly connects to the rear garden. Upstairs, three well-proportioned bedrooms offer flexibility, whether for family life or a dedicated home office. With off-road parking, a detached garage, and a wraparound garden, this home presents a fantastic opportunity to enjoy both indoor comfort and outdoor space.

The Location

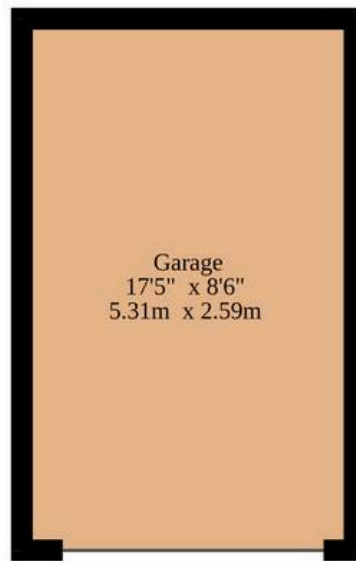
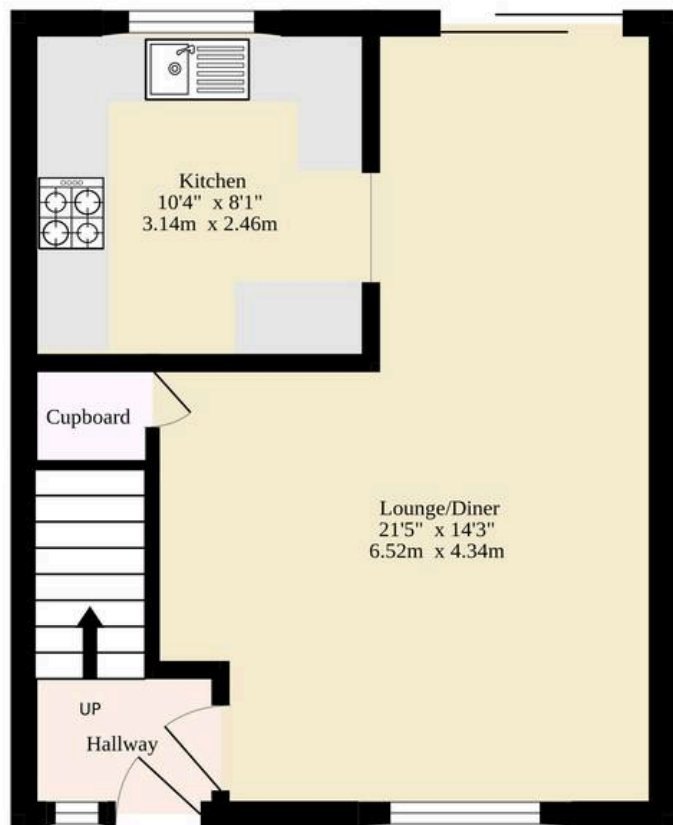
This property is located in a well-regarded area of Thetford, offering a peaceful yet accessible setting. The neighbourhood is within easy reach of local amenities, including supermarkets, shops, and restaurants, making everyday tasks convenient. Excellent transport links, including bus services and nearby road connections, provide easy access to the town centre and surrounding areas. With local schools, parks, and green spaces close by, this area is ideal for both families and professionals.

Woodlands Drive

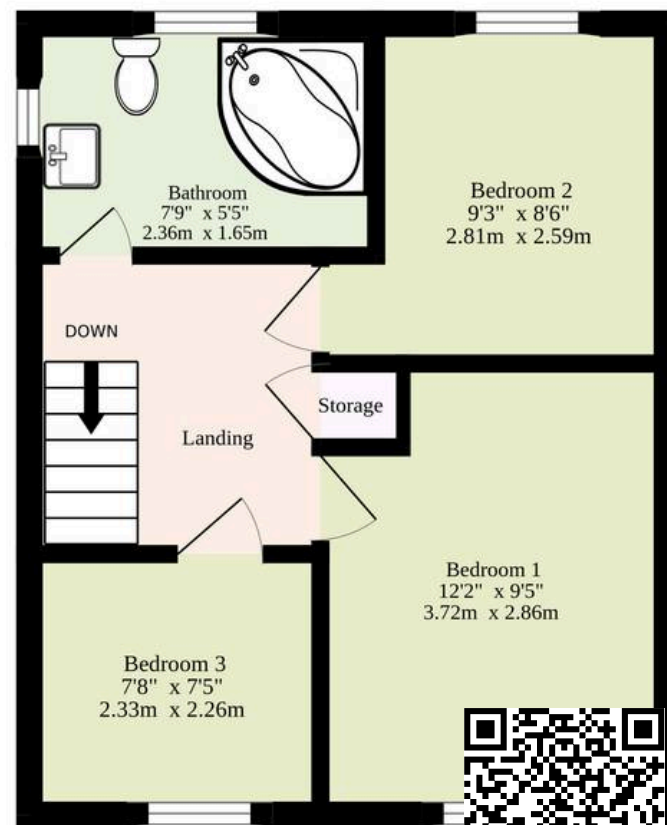
This impressive corner-plot home in well-connected Thetford offers generous space both inside and out, making it a fantastic choice for families and professionals. Stepping through the front door, you're welcomed by a bright entrance hall with a large window and a coat of arms. The open-plan living, dining, and kitchen area is bright and airy, with a large bay window overlooking the rear garden. The kitchen features white cabinetry, a white countertop, and a white subway tile backsplash. The living area has a large fireplace and a large window. The dining area has a large window and a large door leading to the rear garden. The rear garden is a large, well-maintained lawn with a large tree and a detached garage. The property also has off-road parking and a wraparound garden.



Ground Floor
563 sq.ft. (52.3 sq.m.) approx.



1st Floor
344 sq.ft. (32.0 sq.m.) approx.



TOTAL FLOOR AREA : 907 sq.ft. (84.3 sq.m.) approx.

Whilst every attempt has been made to ensure the accuracy of the floorplan contained here, measurements of doors, windows, rooms and any other items are approximate and no responsibility is taken for any error, omission or mis-statement. This plan is for illustrative purposes only and should be used as such by any prospective purchaser. The services, systems and appliances shown have not been tested and no guarantee as to their operability or efficiency can be given.

Made with Metropix ©2025