



12 Broadlands Road, Hickling
£395,000

12 Broadlands Road

Hickling, Norwich

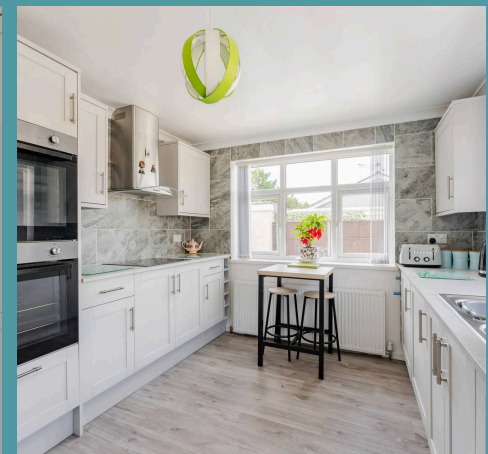
Framed by a charming windmill in the distance and endless unspoilt field views, this modern bungalow offers a picturesque countryside setting. Designed for stylish and spacious living, the home features a contemporary kitchen/diner, an impressive lounge with a log burner, and a newly extended sunlit dining area. Three well-proportioned bedrooms provide comfort and versatility, while the beautifully maintained garden offers a peaceful outdoor environment. Completing the property is a driveway with a garage/WC, ensuring both convenience and practicality in this stunning countryside home.

Council Tax band: C

Tenure: Freehold

EPC Energy Efficiency Rating: D

EPC Environmental Impact Rating: E





12 Broadlands Road

Hickling, Norwich

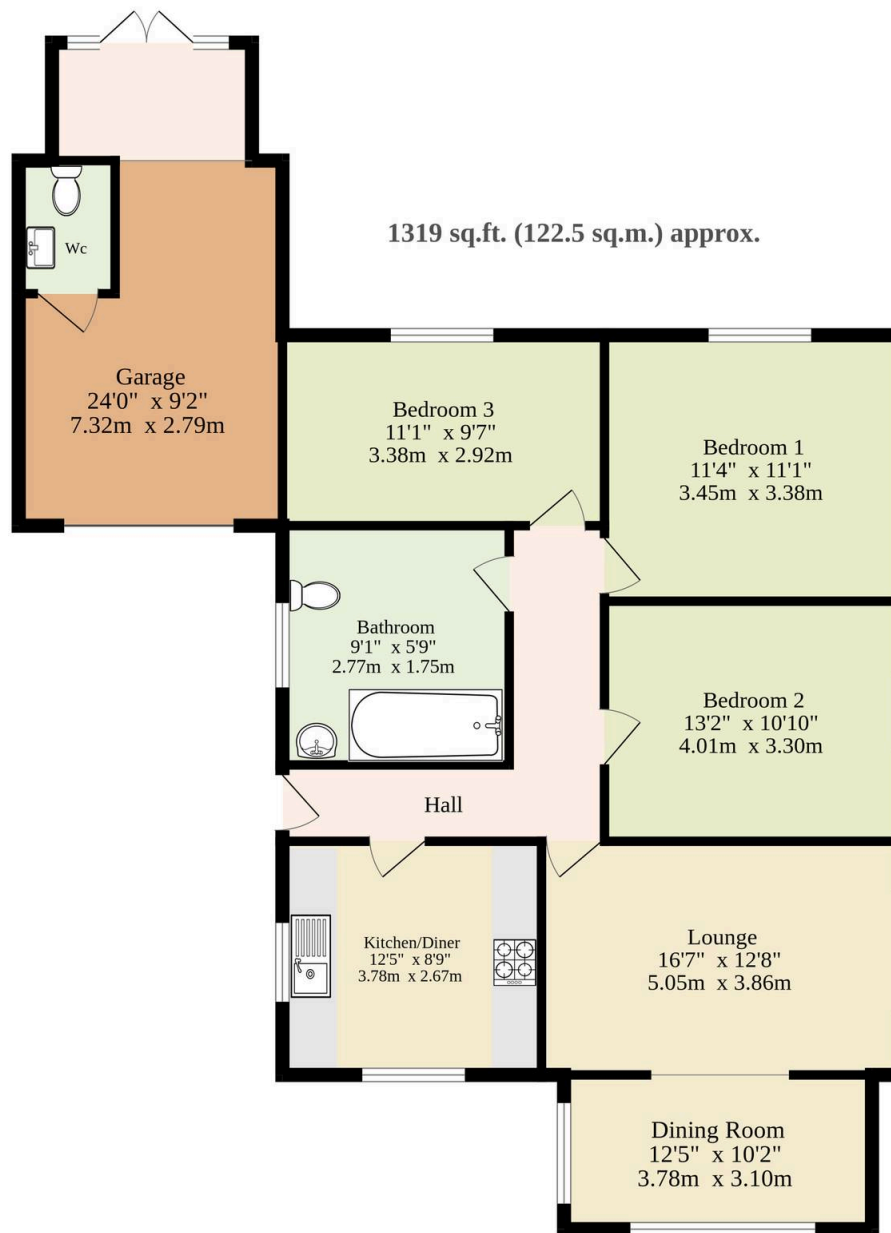
Framed by a charming windmill in the distance and endless unspoilt field views, this modern bungalow offers a picturesque countryside setting. Designed for stylish and spacious living, the home features a contemporary kitchen/diner, an impressive lounge with a log burner, and a newly extended sunlit dining area. Three well-proportioned bedrooms provide comfort and versatility, while the beautifully maintained garden offers a peaceful outdoor environment. Completing the property is a driveway with a garage/WC, ensuring both convenience and practicality in this stunning countryside home.

The Location

Located in Hickling, a charming village nestled in the heart of the Norfolk Broads, a picturesque region known for its stunning waterways, nature reserves, and scenic landscapes. Hickling offers a peaceful and idyllic setting for those seeking a tranquil escape. The village of Hickling is renowned for its natural beauty, with vast marshlands, meadows, and woodlands that provide a haven for a wide array of wildlife.

It is home to Hickling Broad, the largest of the Norfolk Broads, offering opportunities for boating, sailing, and birdwatching. In addition to its natural wonders, Hickling boasts a close-knit community and a range of local amenities. The village features a charming country pub where residents and visitors can relax and enjoy a drink or a meal in a warm and welcoming atmosphere. There are also quaint local establishments that contribute to the village's unique character.





TOTAL FLOOR AREA : 1319 sq.ft. (122.5 sq.m.) approx.

Whilst every attempt has been made to ensure the accuracy of the floorplan contained here, measurements of doors, windows, rooms and any other items are approximate and no responsibility is taken for any error, omission or mis-statement. This plan is for illustrative purposes only and should be used as such by any prospective purchaser. The services, systems and appliances shown have not been tested and no guarantee as to their operability or efficiency can be given.
Made with Metropix ©2025