



39 Renwick Park East, West Runton

Offers in Region of £450,000

39 Renwick Park East

West Runton, Cromer

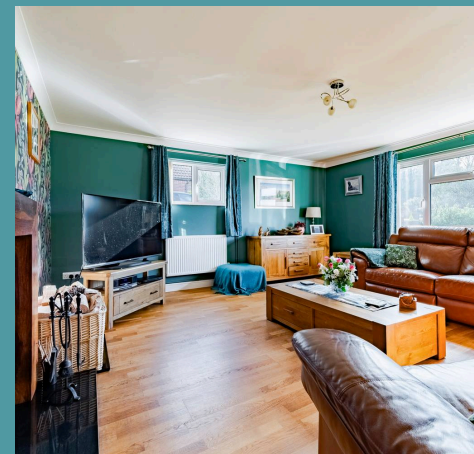
This beautifully presented two-bedroom detached bungalow offers spacious living in a sought-after location, featuring an entrance porch, reception hall with oiled oak flooring, and loft access via a pull-down ladder. The contemporary kitchen, with integrated appliances, opens to the rear patio, while the dining room flows into a light-filled conservatory overlooking the landscaped garden. Both double bedrooms are well-proportioned, with the master offering built-in wardrobes and views of the rear garden. The property includes a gravelled driveway, attached garage, and a low-maintenance front garden with mature shrubs. The private rear garden, with a large patio, vegetable plots, and mature trees, is perfect for outdoor living.

Council Tax band: D

Tenure: Freehold

EPC Energy Efficiency Rating: D

EPC Environmental Impact Rating: D





39 Renwick Park East

West Runton, Cromer

This beautifully presented two-bedroom detached bungalow offers spacious living in a highly sought-after location, with an entrance porch, reception hall featuring oiled oak flooring, and loft access via a pull-down ladder. The contemporary kitchen, complete with integrated appliances, opens out onto the rear patio, while the dining room—originally a third bedroom—flows effortlessly into a light-filled conservatory that overlooks the meticulously landscaped garden. Both double bedrooms are well-proportioned, with built-in wardrobes, and the master bedroom offers a view of the rear garden. The property also boasts a gravelled driveway, an attached garage, and a low-maintenance front garden with mature shrubs. The private rear garden, which includes a large patio, vegetable plots, and mature trees, is a perfect space for outdoor living.

The Location

Renwick Park West is nestled within the charming coastal village of West Runton, located in the heart of the stunning North Norfolk region. This peaceful and highly desirable location offers the perfect balance between countryside charm and seaside beauty. A short stroll will bring you to unspoiled sandy beaches and dramatic cliffs, ideal for coastal walks and enjoying the natural landscape.

West Runton is renowned for its picturesque village ambiance, with a selection of quaint tea rooms, traditional pubs, and independent shops, all just a short drive from the bustling towns of Cromer and Sheringham, which offer additional shopping, dining, and leisure options. Renwick Park West



Ground Floor
1247 sq.ft. (115.9 sq.m.) approx.



TOTAL FLOOR AREA : 1247 sq.ft. (115.9 sq.m.) approx.

Whilst every attempt has been made to ensure the accuracy of the floorplan contained here, measurements of doors, windows, rooms and any other items are approximate and no responsibility is taken for any error, omission or mis-statement. This plan is for illustrative purposes only and should be used as such by any prospective purchaser. The services, systems and appliances shown have not been tested and no guarantee as to their operability or efficiency can be given.

Made with Metropix ©2025