



The Haven Marsh Road, Hoveton
£850,000

The Haven Marsh Road

Hoveton, Norwich

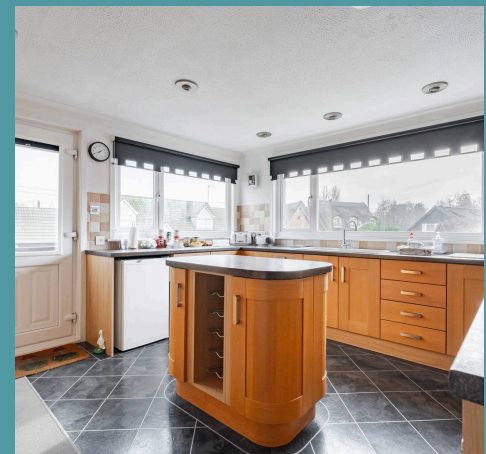
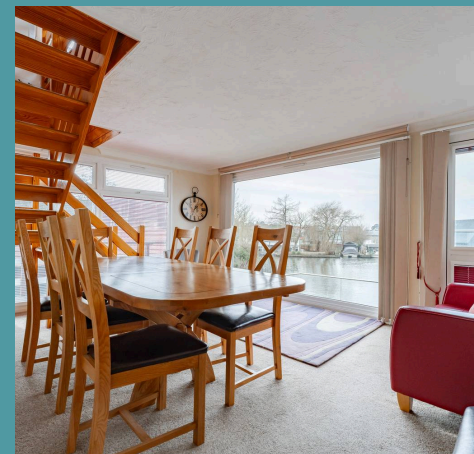
An unrivaled waterside escape lies in The Haven, a stunning three-bedroom home offering panoramic river views and a private 60ft mooring. Spanning three levels, this beautifully designed property combines generous living spaces with modern comforts, creating an idyllic setting for those who love life by the water. With balconies on each floor, a versatile layout, and a breathtaking second reception room, the home is designed to make the most of its spectacular surroundings. Complete with a newly built boat house, a spacious garage, and a gated gravel driveway, this exceptional residence presents a rare opportunity to embrace an unrivaled riverside lifestyle in Hoveton.

Council Tax band: E

Tenure: Freehold

EPC Energy Efficiency Rating: E

EPC Environmental Impact Rating: E





The Haven Marsh Road

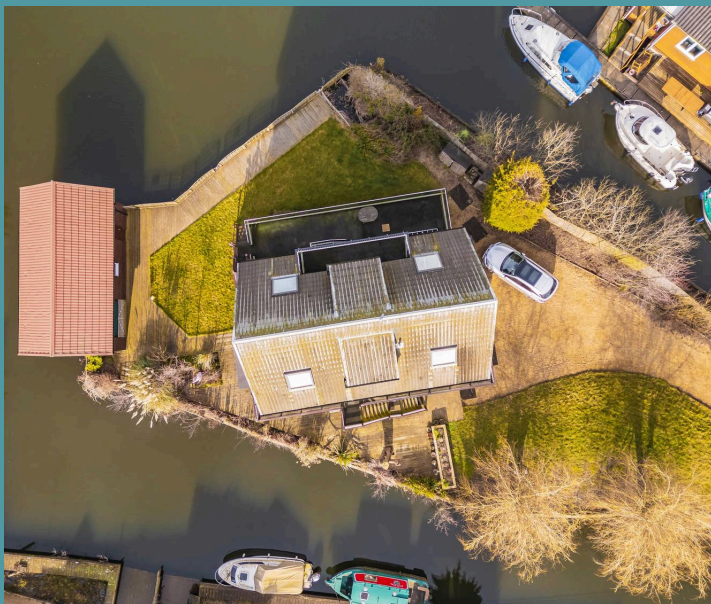
Hoveton, Norwich

An unrivaled waterside escape lies in The Haven, a stunning three-bedroom home offering panoramic river views and a private 60ft mooring. Spanning three levels, this beautifully designed property combines generous living spaces with modern comforts, creating an idyllic setting for those who love life by the water. With balconies on each floor, a versatile layout, and a breathtaking second reception room, the home is designed to make the most of its spectacular surroundings. Complete with a newly built boat house, a spacious garage, and a gated gravel driveway, this exceptional residence presents a rare opportunity to embrace an unrivaled riverside lifestyle in Hoveton.

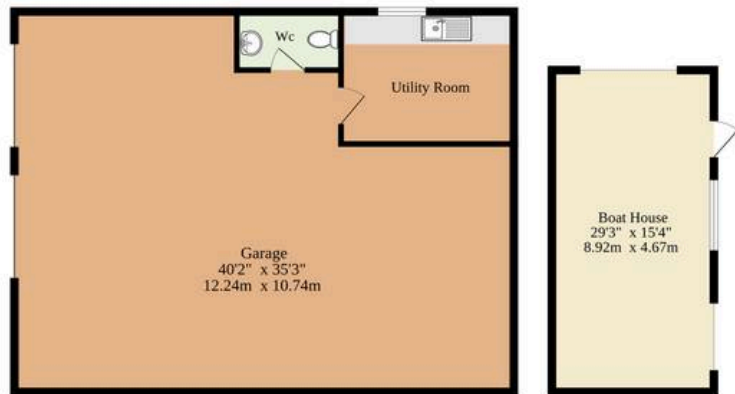
What Does Life in Wroxham Look Like?

Life in Hoveton and Wroxham is an idyllic blend of rural charm and waterside living. Known as the "Capital of the Broads," this picturesque region offers a unique lifestyle centred around the waterways. Residents and visitors alike enjoy leisurely cruises, watersports, and fishing on the River Bure and the surrounding Broads. Many homes, particularly those on prestigious roads like "The Avenues," boast stunning river views or even private moorings.

There's far more than just the waterways, though. The locally famous "Roys" brand provides the villages with many different shops for food, clothing, and general needs. There's even a petrol station. Alongside the amenities that Roys delivers, there is also schooling for all ages, a good medical centre, cafes, restaurants, fast food, fishing opportunities, and nature walks.



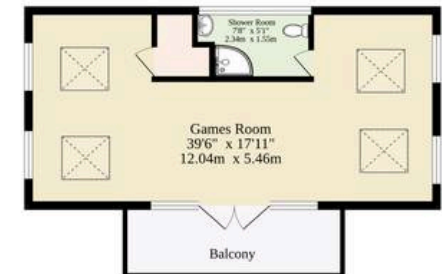
Ground Floor
1987 sq.ft. (184.6 sq.m.) approx.



1st Floor
1305 sq.ft. (121.2 sq.m.) approx.



2nd Floor
717 sq.ft. (66.6 sq.m.) approx.



Including Outbuildings And Balconies

TOTAL FLOOR AREA : 4009 sq.ft. (372.4 sq.m.) approx.

Whilst every attempt has been made to ensure the accuracy of the floorplan contained here, measurements of doors, windows, rooms and any other items are approximate and no responsibility is taken for any error, omission or mis-statement. This plan is for illustrative purposes only and should be used as such by any prospective purchaser. The services, systems and appliances shown have not been tested and no guarantee as to their operability or efficiency can be given.
Made with Metropix ©2025

