

## Flat 4, 3 Priory Plain, Great Yarmouth

£60,000 Leasehold

GUIDE PRICE £60,000 - £70,000. Located in a sought-after area, this one-bedroom flat offers a great opportunity for first-time buyers, investors, or anyone seeking a low-maintenance property in a central location. The flat includes a lounge and a separate kitchen, providing comfortable living space. It is conveniently situated close to local amenities, transport links, and the seafront, making it an ideal choice for those looking for both convenience and comfort.

Council Tax band: A

Tenure: Leasehold



GUIDE PRICE £60,000 - £70,000. Located in a sought-after area, this one-bedroom flat offers a great opportunity for first-time buyers, investors, or anyone seeking a low-maintenance property in a central location. The flat includes a lounge and a separate kitchen, providing comfortable living space. It is conveniently situated close to local amenities, transport links, and the seafront, making it an ideal choice for those looking for both convenience and comfort.

### Location

Situated in central Great Yarmouth, the location offers easy access to a variety of local amenities, including shops, restaurants, and cafes. The bustling marketplace is nearby, providing a wide selection of retail options. With excellent transport links, including bus and train stations within walking distance, commuting or exploring the surrounding areas is hassle-free. With its sandy beaches and promenade, the seafront is just a short stroll away, perfect for leisurely walks or enjoying coastal views. The area offers both the vibrancy of the town centre and the charm of nearby natural attractions.

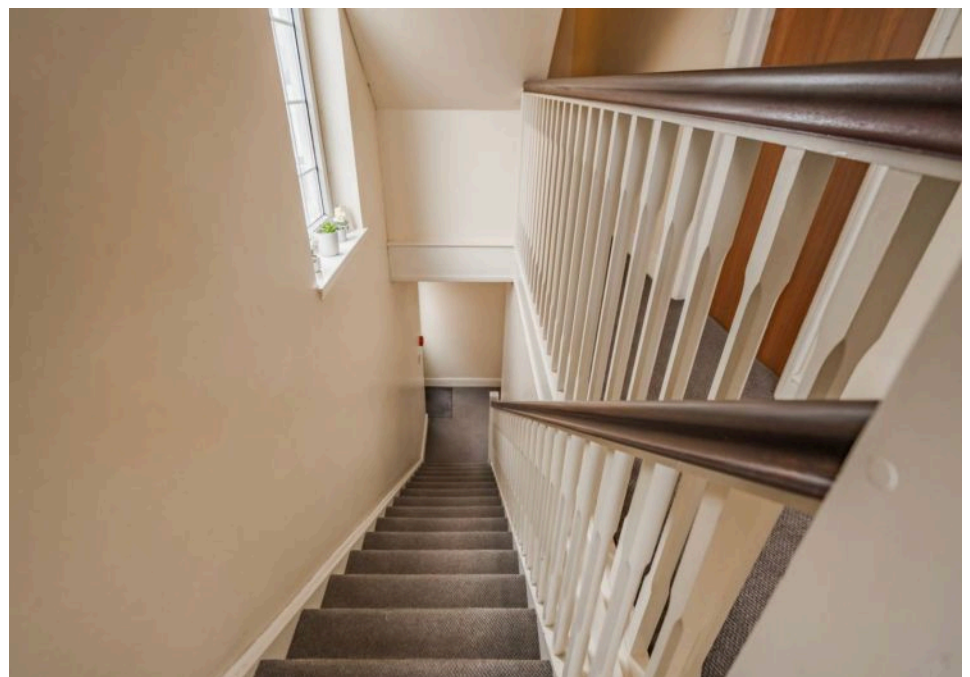


GUIDE PRICE £60,000 - £70,000.

Located in a sought-after area, this one-bedroom flat offers a great opportunity for first-time buyers, investors, or anyone seeking a low-maintenance property in a central location. The flat includes a lounge and a separate kitchen, providing comfortable living space. It is conveniently situated close to local amenities, transport links, and the seafront, making it an ideal choice for those looking for both convenience and comfort.

### Location

Situated in central Great Yarmouth





GUIDE PRICE £60,000 - £70,000. Located in a sought-after area, this one-bedroom flat offers a great opportunity for first-time buyers, investors, or anyone seeking a low-maintenance property in a central location. The flat includes a lounge and a separate kitchen, providing comfortable living space. It is conveniently situated close to local amenities, transport links, and the seafront, making it an ideal choice for those looking for both convenience and comfort.

### Location

Situated in central Great Yarmouth, the location offers easy access to a variety of local amenities, including shops, restaurants, and cafes. The bustling marketplace is nearby, providing a wide selection of retail options. With excellent transport links, including bus and train stations within walking distance, commuting or exploring the surrounding areas is hassle-free. With its sandy beaches and promenade, the seafront is just a short stroll away, perfect for leisurely walks or enjoying coastal views. The area offers both the vibrancy of the town centre and the charm of nearby natural attractions.

### Priory Plain, Great Yarmouth

Upon entering through the welcoming entrance hall, you are greeted with a space that is not only functional but also features insulated loft space for added convenience, along with a built-in cupboard providing ample storage.

As you move through, you will find a generously sized lounge area that benefits from natural light streaming through a window, creating a bright and airy atmosphere perfect for relaxing or entertaining.

The separate kitchen is well-designed with built-in cupboards and basic counter space, providing a functional area for meal preparation.

The flat includes a spacious double bedroom, offering a peaceful retreat for rest and relaxation. There's enough room for your furnishings and personal touches, making it a comfortable private space within the heart of the town.

Completing the flat is a functional bathroom, offering a practical space for your daily routines.

### Agents notes

We understand the property will be sold leasehold, connected to mains services water, electricity, gas and drainage.

62 Years left on the lease.



You can include any text here. The text can be modified upon generating your brochure.

You can include any text here. The text can be modified upon generating your brochure.

