



13 Beehive Way, Bawdeswell

Guide Price £325,000

13 Beehive Way

Bawdeswell, Dereham

Guide Price £325,000 - £350,000. This eco-friendly Abel homes build in Bawdeswell combines modern living with energy efficiency, featuring an outstanding 'A' rated EPC, air source heating, and solar panels. The spacious living room and well-designed kitchen provide an ideal setting for both relaxation and entertaining. With three generously sized bedrooms, including a main bedroom with an en-suite, and a stylish family bathroom, the home offers both comfort and functionality. Outside, the property boasts a brick-paved driveway for two cars and a beautifully landscaped rear, north-facing garden. With no onward chain, this energy-efficient home is ready for its next owner.

Council Tax band: D

Tenure: Freehold

EPC Energy Efficiency Rating: A

EPC Environmental Impact Rating: A





13 Beehive Way

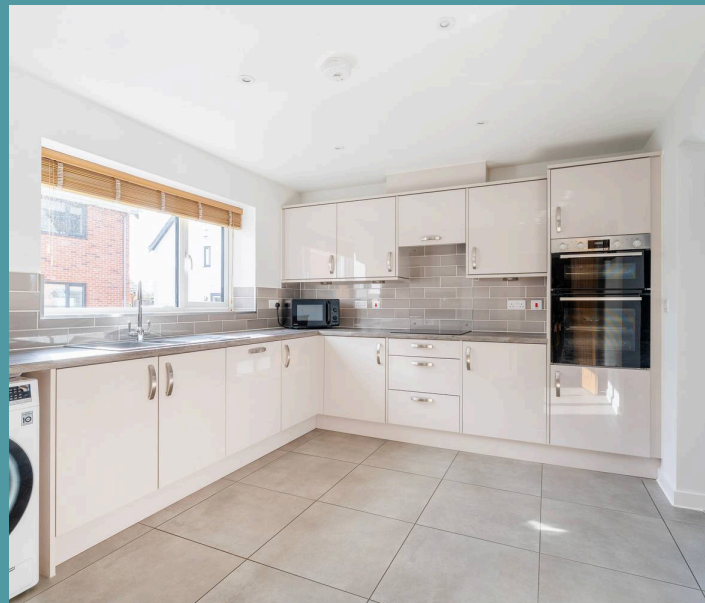
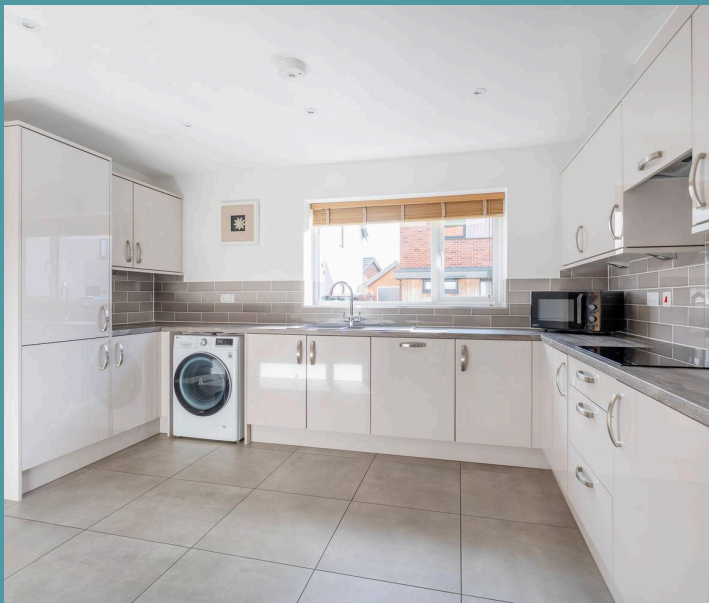
Bawdeswell, Dereham

Guide Price £325,000 - £350,000. This eco-friendly Abel homes build in Bawdeswell combines modern living with energy efficiency, featuring an outstanding 'A' rated EPC, air source heating, and solar panels. The spacious living room and well-designed kitchen provide an ideal setting for both relaxation and entertaining. With three generously sized bedrooms, including a main bedroom with an en-suite, and a stylish family bathroom, the home offers both comfort and functionality. Outside, the property boasts a brick-paved driveway for two cars and a beautifully landscaped rear, north-facing garden. With no onward chain, this energy-efficient home is ready for its next owner.

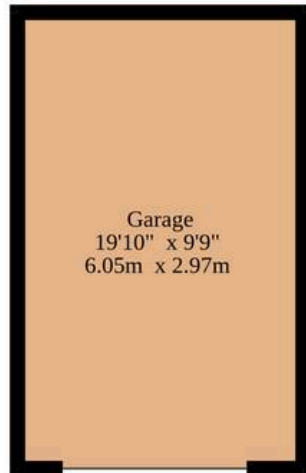
The Location

Positioned in the heart of Bawdeswell, enjoy a prime location with a wealth of amenities right at your doorstep. The Bawdeswell village hall, a hub of community activities and events, is just a stone's throw away. For garden enthusiasts, the Bawdeswell Garden Centre is a delightful place to explore. And if you need to run errands or do your daily shopping, Morrisons Daily is conveniently nearby.

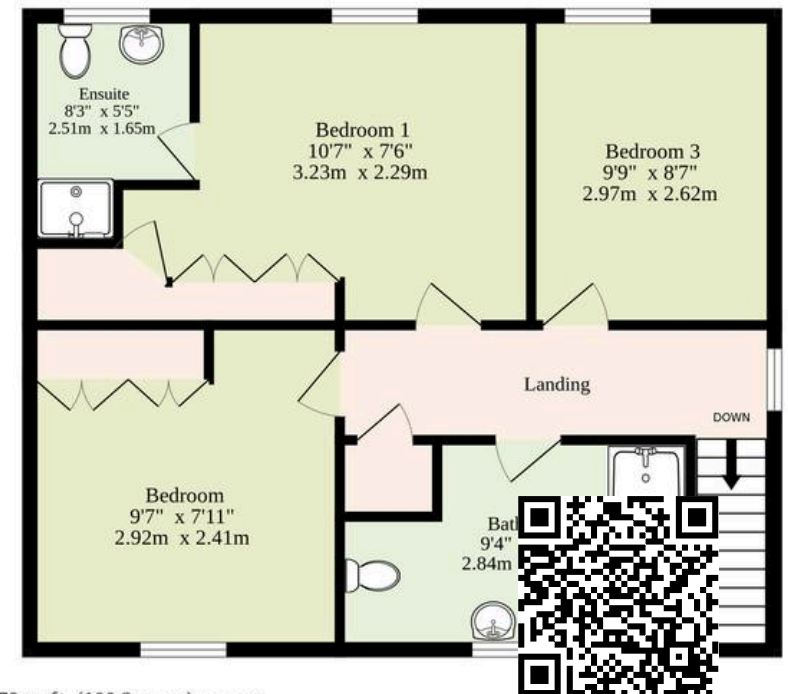
Nestled in the heart of Bawdeswell, enjoy a prime location with a wealth of amenities right at your doorstep. The Bawdeswell village hall, a hub of community activities and events, is just a stone's throw away. For garden enthusiasts, the Bawdeswell Garden Centre is a delightful place to explore. And if you need to run errands or do your daily shopping, Morrisons Daily is conveniently nearby.



Ground Floor
682 sq.ft. (63.4 sq.m.) approx.



1st Floor
397 sq.ft. (36.9 sq.m.) approx.



TOTAL FLOOR AREA : 1079 sq.ft. (100.2 sq.m.) approx.

Whilst every attempt has been made to ensure the accuracy of the floorplan contained here, measurements of doors, windows, rooms and any other items are approximate and no responsibility is taken for any error, omission or mis-statement. This plan is for illustrative purposes only and should be used as such by any prospective purchaser. The services, systems and appliances shown have not been tested and no guarantee as to their operability or efficiency can be given.

Made with Metropix ©2025