



57 Norwich Road, North Walsham

Offers Over £350,000

57 Norwich Road

North Walsham, North Walsham

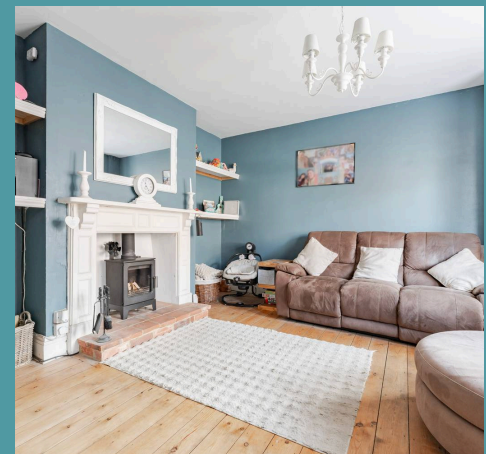
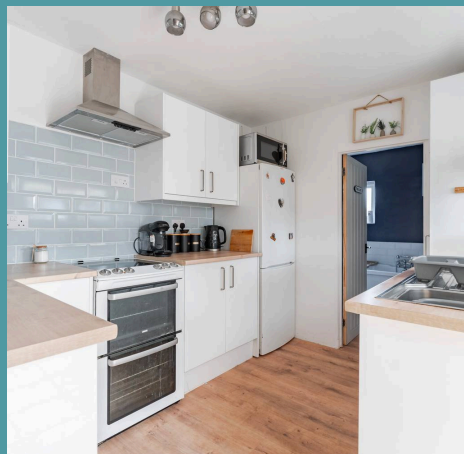
Family-friendly living meets character in this beautifully designed home, where period features and generous proportions create a welcoming atmosphere. The spacious interiors are enhanced by elegant details, from patterned flooring and exposed brickwork to classic fireplaces and wood paneling. Light-filled living areas, including a charming sitting room and a sunlit conservatory, offer comfort. Thoughtfully updated, the kitchen and bathrooms blend vintage appeal with modern convenience, while three well-sized bedrooms provide space for family life. Outside, a large garden, patio seating and dedicated parking complete this home, perfectly balancing tradition and practicality.

Council Tax band: C

Tenure: Freehold

EPC Energy Efficiency Rating: D

EPC Environmental Impact Rating: E





57 Norwich Road

North Walsham, North Walsham

Family-friendly living meets character in this beautifully designed home, where period features and generous proportions create a welcoming atmosphere. The spacious interiors are enhanced by elegant details, from patterned flooring and exposed brickwork to classic fireplaces and wood paneling. Light-filled living areas, including a charming sitting room and a sunlit conservatory, offer comfort. Thoughtfully updated, the kitchen and bathrooms blend vintage appeal with modern convenience, while three well-sized bedrooms provide space for family life. Outside, a large garden, patio seating and dedicated parking complete this home, perfectly balancing tradition and practicality.

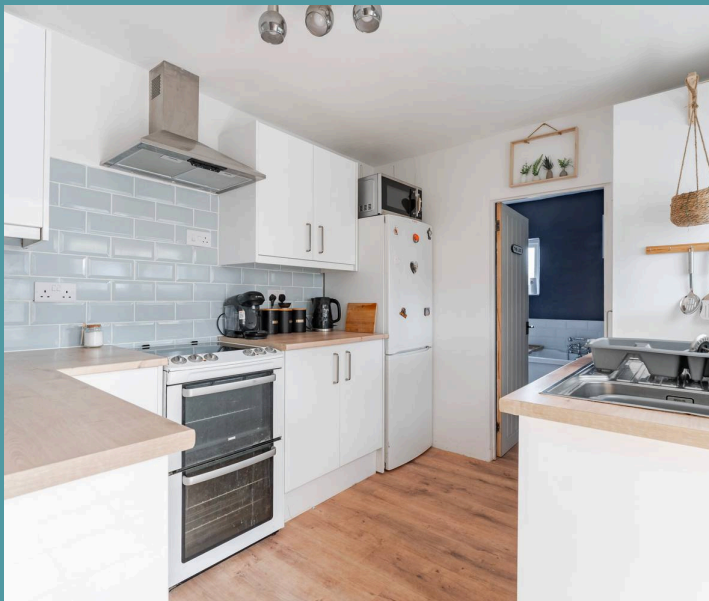
The Location

North Walsham is a bustling market town offering schooling for all ages, easy access to the city and also the North Norfolk coast plus all essential shops and amenities plus its local train station which is approx 0.8 miles away.

You can walk to attend a weekly market in the town centre, a range of supermarkets, GP surgeries, parks and schools for all ages are also available. You can find the UEA, Science park & University hospital around 18 miles away, 12 miles to Norwich Airport, 15 miles to Norwich Railway Station giving access to London and further afield plus 8.3 miles to Cromer.

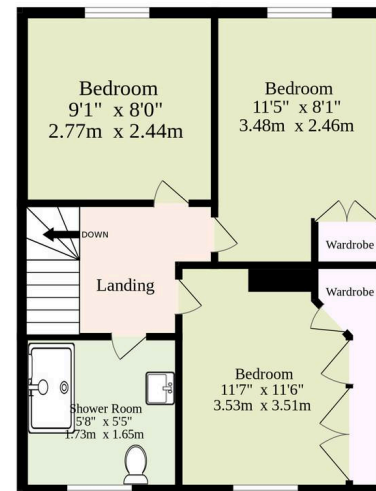
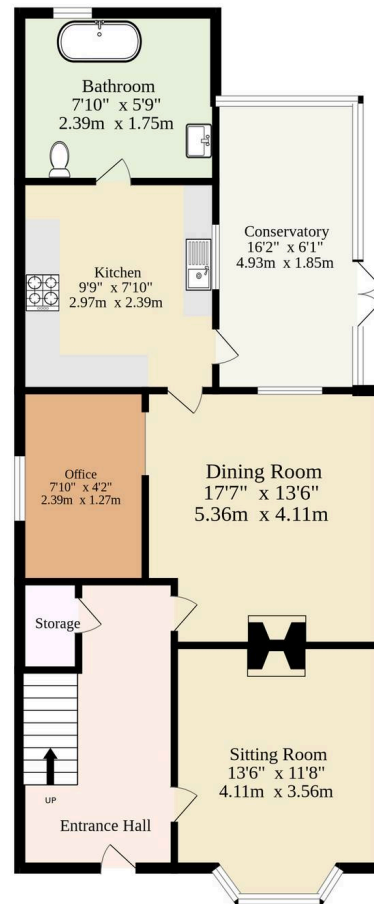
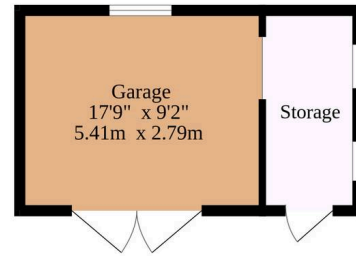
Norwich Road, North Walsham

This impressive family home perfectly blends character-filled spaces with today's conveniences.



Ground Floor
1048 sq.ft. (97.4 sq.m.) approx.

1st Floor
410 sq.ft. (38.1 sq.m.) approx.



TOTAL FLOOR AREA : 1458 sq.ft. (135.5 sq.m.) approx.

Whilst every attempt has been made to ensure the accuracy of the floorplan contained here, measurements of doors, windows, rooms and any other items are approximate and no responsibility is taken for any error, omission or mis-statement. This plan is for illustrative purposes only and should be used as such by any prospective purchaser. The services, systems and appliances shown have not been tested and no guarantee as to their operability or efficiency can be given.
Made with Metropix ©2025

