



## 6 Chapel Road, Trunch

Guide Price £300,000



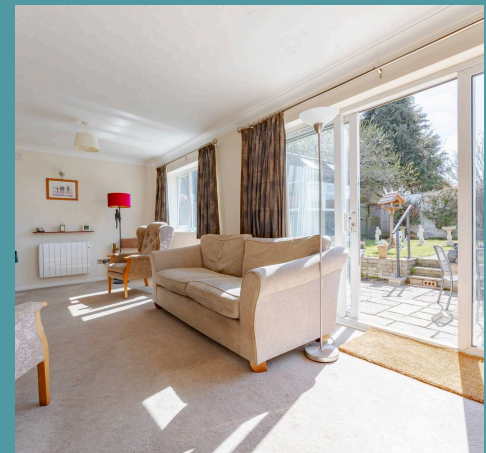
## 6 Chapel Road

Trunch, North Walsham

Guide Price: £300,000-£325,000 Beautifully updated throughout, this period cottage on Chapel Road offers spacious and flexible living across three well-proportioned bedrooms and two reception rooms. A standout reception hall greets you with parquet flooring underfoot and a galleried landing above. The home continues to impress with a contemporary kitchen, a stylishly finished shower room, and a generous dual-aspect lounge that opens out to the garden. Additional highlights include a practical first-floor WC, a low-maintenance garden with patio and pond and a detached, insulated hobby room or home office. Recent improvements include a full rewire with brushed steel sockets, modern electric heating throughout and the valuable addition of solar panels for increased efficiency and lower energy costs.

Council Tax band: B

Tenure: Freehold







## 6 Chapel Road

Trunch, North Walsham

Guide Price: £300,000-£325,000 Beautifully updated throughout, this period cottage on Chapel Road offers spacious and flexible living across three well-proportioned bedrooms and two reception rooms. A standout reception hall greets you with parquet flooring underfoot and a galleried landing above. The home continues to impress with a contemporary kitchen, a stylishly finished shower room, and a generous dual-aspect lounge that opens out to the garden. Additional highlights include a practical first-floor WC, a low-maintenance garden with patio and pond and a detached, insulated hobby room or home office. Recent improvements include a full rewire with brushed steel sockets, modern electric heating throughout and the valuable addition of solar panels for increased efficiency and lower energy costs.

### The Location

Chapel Road in Trunch sits in the heart of a picturesque North Norfolk village known for its characterful charm and strong sense of community. Surrounded by countryside and just a short drive from the seaside village of Mundesley, with Cromer's beaches and amenities only six miles away, it's a location that perfectly balances rural calm with coastal access.

Well-connected by local bus routes and part of the National Cycle Network, Trunch is ideal for both commuting and scenic outdoor adventures. The village hosts regular community events and activities, fostering a friendly and welcoming atmosphere. This property enjoys a prime spot



Ground Floor  
1163 sq.ft. (108.0 sq.m.) approx.

1st Floor  
1163 sq.ft. (108.0 sq.m.) approx.



TOTAL FLOOR AREA : 2326 sq.ft. (216.1 sq.m.) approx.

Whilst every attempt has been made to ensure the accuracy of the floorplan contained here, measurements of doors, windows, rooms and any other items are approximate and no responsibility is taken for any error, omission or mis-statement. This plan is for illustrative purposes only and should be used as such by any prospective purchaser. The services, systems and appliances shown have not been tested and no guarantee as to their operability or efficiency can be given.  
Made with Metropix ©2025