



5 St. Peters Close, Norwich

Offers Over £500,000

5 St. Peters Close

Norwich, Norwich

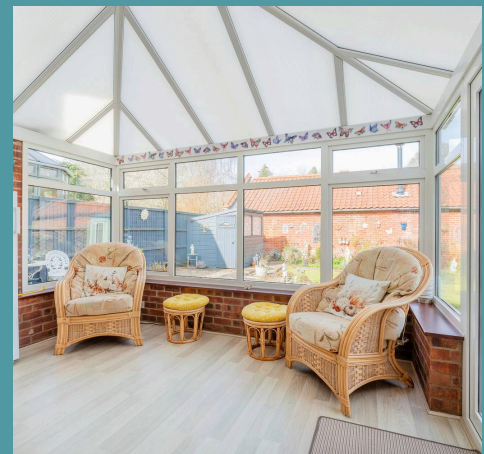
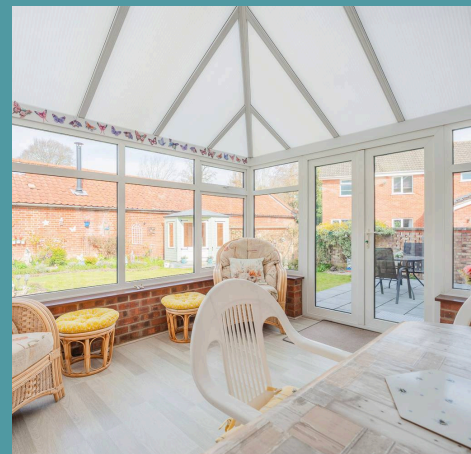
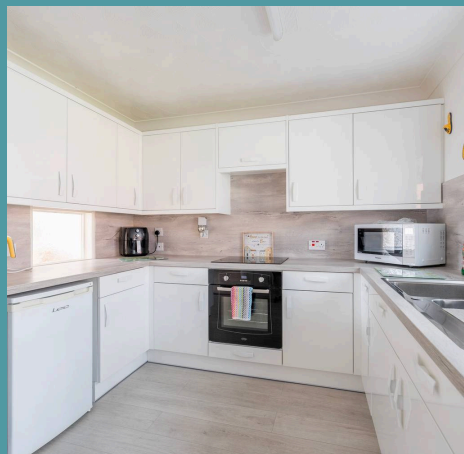
Tailored to a family lifestyle, this well-presented four-bedroom detached home in Cringleford offers generous living spaces and a practical design. The spacious layout includes a large sitting room, separate dining area, and a bright conservatory, providing plenty of room for both relaxation and entertaining. A fully fitted U-shaped kitchen ensures a functional cooking space, while the welcoming entrance hall features a useful WC and ample storage. Upstairs, four generously sized bedrooms and a modern shower room create a comfortable setting for all members of the household. Completing the home, a beautifully landscaped, non-overlooked garden, off-road parking, and a garage.

Council Tax band: E

Tenure: Freehold

EPC Energy Efficiency Rating: D

EPC Environmental Impact Rating: D





5 St. Peters Close

Norwich, Norwich

Tailored to a family lifestyle, this well-presented four-bedroom detached home in Cringleford offers generous living spaces and a practical design. The spacious layout includes a large sitting room, separate dining area, and a bright conservatory, providing plenty of room for both relaxation and entertaining. A fully fitted U-shaped kitchen ensures a functional cooking space, while the welcoming entrance hall features a useful WC and ample storage. Upstairs, four generously sized bedrooms and a modern shower room create a comfortable setting for all members of the household. Completing the home, a beautifully landscaped, non-overlooked garden, off-road parking, and a garage.

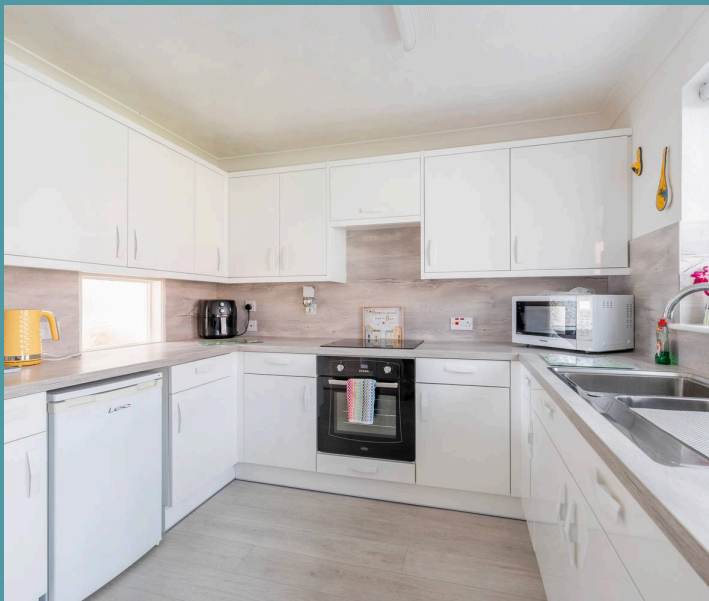
The Location

St. Peters Close, Cringleford, is located in a highly sought-after village, offering a peaceful yet well-connected setting. The area features excellent local amenities, including shops, schools, and recreational facilities, making it ideal for families and professionals.

With easy access to nearby bus routes and major roads, this location provides a convenient commute to the University of East Anglia (UEA), Norfolk and Norwich University Hospital (NNUH), and the City Centre. Surrounded by beautiful countryside, it provides quiet living while remaining close to essential services and transport links.

St. Peters Close

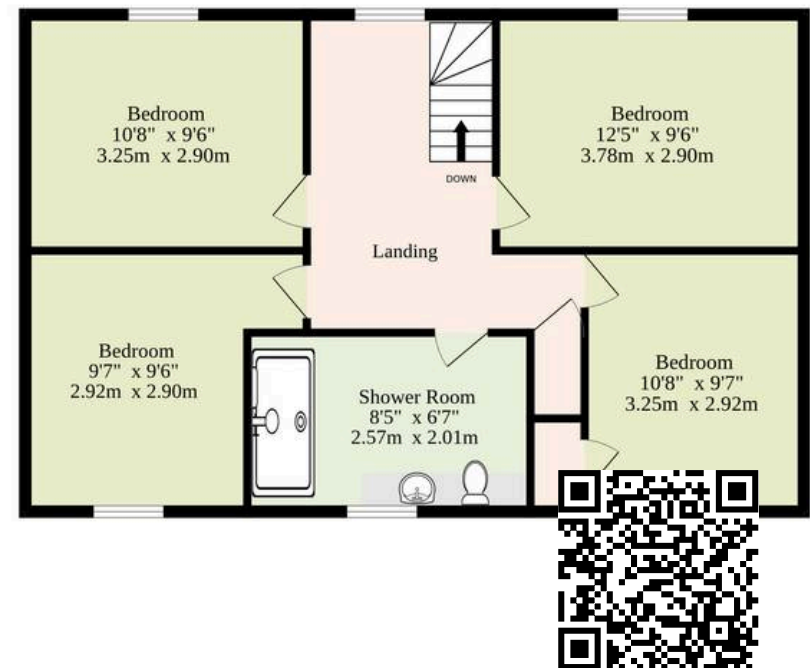
Upon entering, a large and welcoming hallway sets



Ground Floor
872 sq.ft. (81.0 sq.m.) approx.



1st Floor
551 sq.ft. (51.2 sq.m.) approx.



TOTAL FLOOR AREA : 1423 sq.ft. (132.2 sq.m.) approx.

Whilst every attempt has been made to ensure the accuracy of the floorplan contained here, measurements of doors, windows, rooms and any other items are approximate and no responsibility is taken for any error, omission or mis-statement. This plan is for illustrative purposes only and should be used as such by any prospective purchaser. The services, systems and appliances shown have not been tested and no guarantee as to their operability or efficiency can be given.

Made with Metropix ©2025

