



11 Nelson Close, Bradenham
£230,000

11 Nelson Close

Bradenham, Thetford

Field views provide a picturesque backdrop to this well-proportioned two-bedroom bungalow in the peaceful area of Bradenham, IP25. The layout is thoughtfully designed, featuring a welcoming entrance porch, two comfortable bedrooms, and a centrally positioned bathroom with a three-piece suite. A spacious sitting room with a large front-facing window flows into the L-shaped kitchen, offering ample storage and workspace. Additional practical benefits include a utility room with rear garden and garage access, as well as off-road parking to the front. With a good-sized garden and scope for modernisation, this property presents an excellent opportunity to create a truly personalised home.

Council Tax band: C

Tenure: Freehold





11 Nelson Close

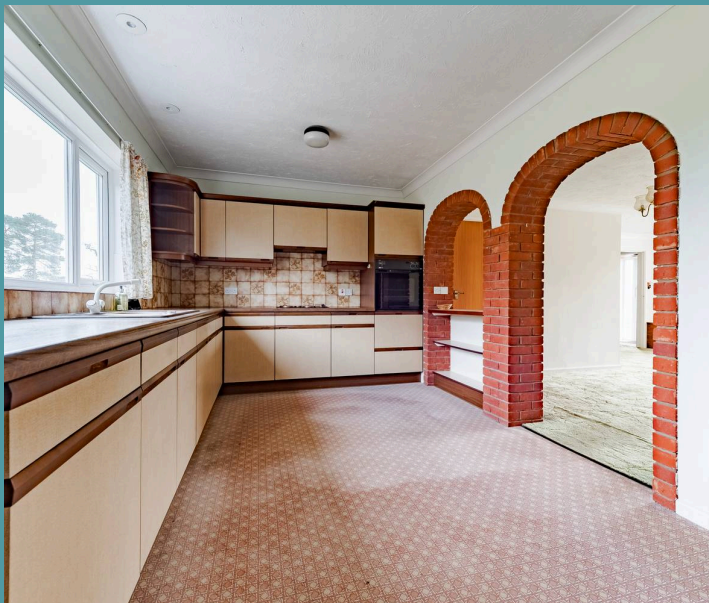
Bradenham, Thetford

Field views provide a picturesque backdrop to this well-proportioned two-bedroom bungalow in the peaceful area of Bradenham, IP25. The layout is thoughtfully designed, featuring a welcoming entrance porch, two comfortable bedrooms, and a centrally positioned bathroom with a three-piece suite. A spacious sitting room with a large front-facing window flows into the L-shaped kitchen, offering ample storage and workspace. Additional practical benefits include a utility room with rear garden and garage access, as well as off-road parking to the front. With a good-sized garden and scope for modernisation, this property presents an excellent opportunity to create a truly personalised home.

The Location

Located in the picturesque village of Bradenham, Nelson Close offers an ideal blend of countryside charm and convenience. Set in the heart of Norfolk, this highly sought-after village enjoys stunning rural surroundings while maintaining easy access to nearby towns such as Dereham and Swaffham, both offering a range of local amenities, schools, and transport links.

The property sits within walking distance of the beautiful St Mary's Church and expansive green spaces, perfect for leisurely walks or outdoor activities. Bradenham is celebrated for its strong community spirit and peaceful village atmosphere, offering a haven for those seeking a quiet lifestyle without sacrificing connectivity. With a harmonious blend of scenic beauty and modern comforts nearby, this location is perfect for



Ground Floor
1085 sq.ft. (100.8 sq.m.) approx.



TOTAL FLOOR AREA : 1085 sq.ft. (100.8 sq.m.) approx.

Whilst every attempt has been made to ensure the accuracy of the floorplan contained here, measurements of doors, windows, rooms and any other items are approximate and no responsibility is taken for any error, omission or mis-statement. This plan is for illustrative purposes only and should be used as such by any prospective purchaser. The services, systems and appliances shown have not been tested and no guarantee as to their operability or efficiency can be given.
Made with Metropix ©2025