



The Willows Street Farm Barns, Catfield

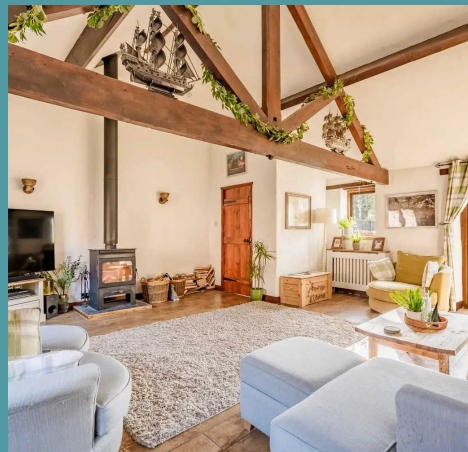
The Willows Street Farm Barns

Catfield, Great Yarmouth

Upon entry, this charming property showcases a delightful kitchen/diner with wooden beams and a classic butler sink, seamlessly flowing into a generous living room featuring brick accents and a cosy wood burner. The modern bathroom and ensuite shower room offer tasteful retreats, while the three well-sized bedrooms cater to various needs. Outside, the south-facing garden boasts a lawn and patio area, enclosed for privacy and security, complemented by off-road parking for convenience.

THE LOCATION

Nestled in the serene village setting of Street Farm Barns, Catfield, NR29, offers an idyllic location for those seeking tranquility. This quiet village boasts essential amenities, including a village post office, a charming church, a welcoming pub and schooling options for families. The well-rounded nature of Catfield extends to its proximity to neighbouring villages and towns, providing residents with additional amenities and conveniences. Ideal for those desiring a peaceful lifestyle, this location combines the charm of village living with easy access to a broader range of facilities in nearby communities.



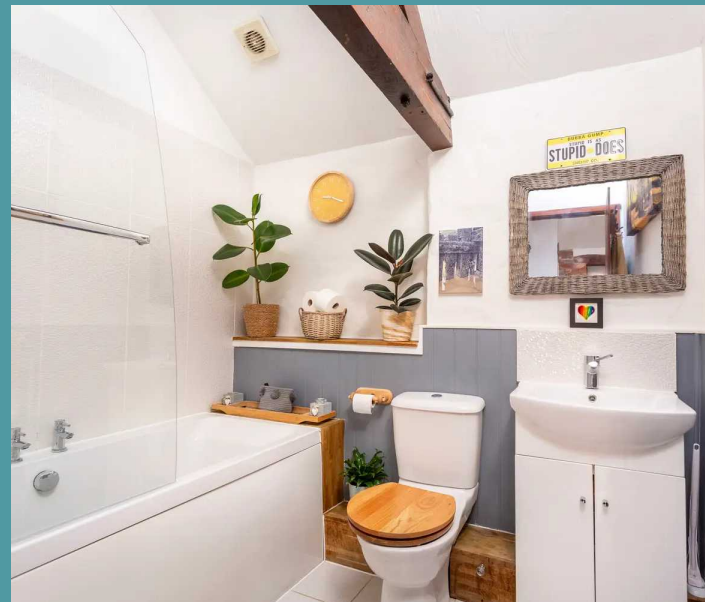
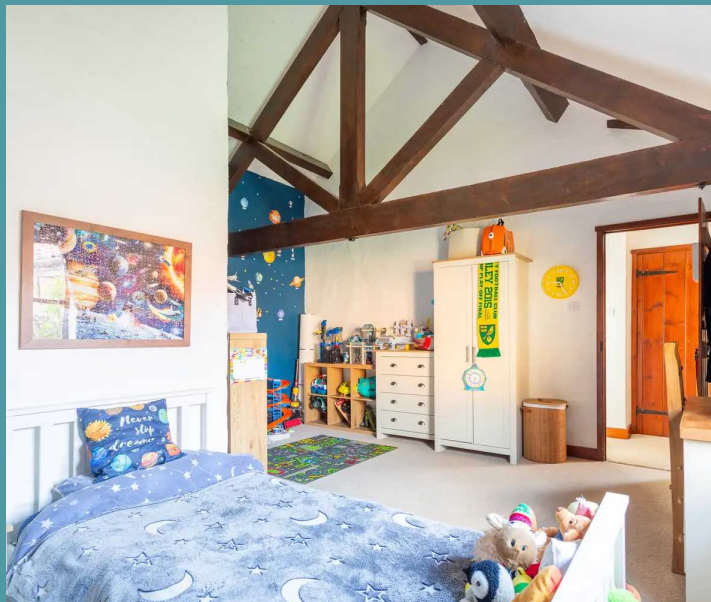


The Willows Street Farm Barns

Catfield, Great Yarmouth

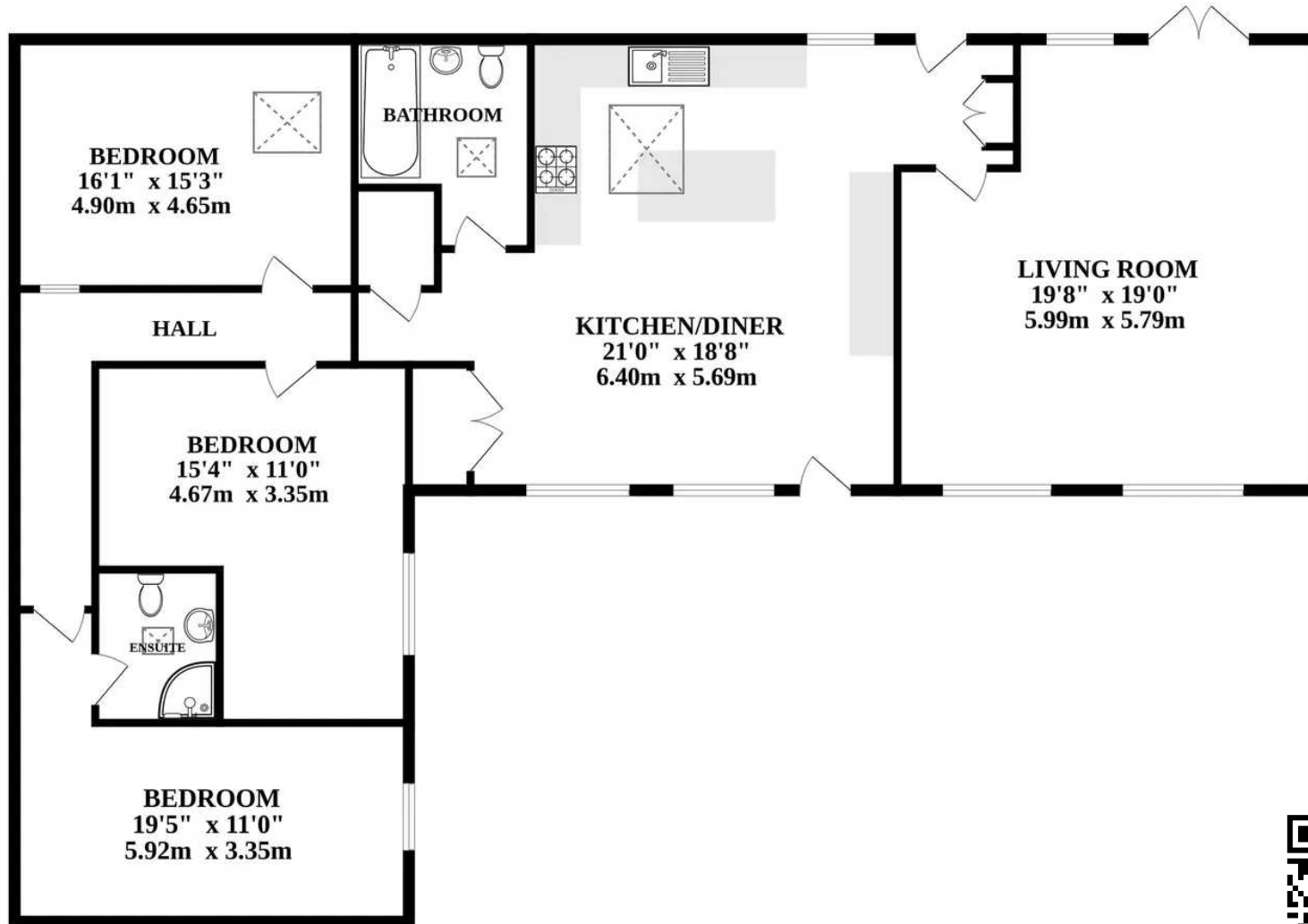
THE PROPERTY

Upon entering, you are greeted by a delightful kitchen/diner boasting wooden beams, a classic butler sink and ample space for versatile dining arrangements, making it the heart of the home for family gatherings and entertaining guests. The property seamlessly flows into a generous living room featuring brick accents, a cosy wood burner and an overall pleasant ambiance, providing the perfect space to unwind and relax after a long day.



The modern bathroom is tastefully designed with contemporary fixtures and fittings, offering a retreat for daily self-care routines. The master bedroom boasts an ensuite shower room for added convenience and privacy, while the remaining two bedrooms are equally well-sized to cater to your evolving needs, whether you require additional living space, a home office, or a guest room.

GROUND FLOOR





The Willows Street Farm Barns

Catfield, Great Yarmouth

Stepping outside, the property presents a south-facing garden plot, offering a great expanse of lawn and a patio area ideal for dining or simply basking in the sun. The garden is thoughtfully enclosed with fencing, providing privacy and security for children and pets to roam freely. Convenience is key with off-road parking available, ensuring hassle-free arrivals and departures.

AGENTS NOTE

We understand this property will be sold freehold connected to mains water, electricity and drainage.

Oil central heating

