



19 Dell Court Dell Road, Lowestoft

Fixed Price £130,000

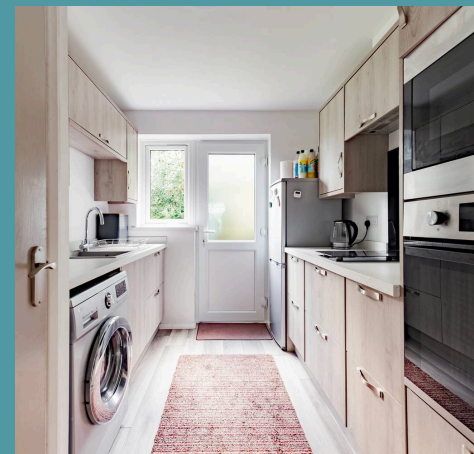
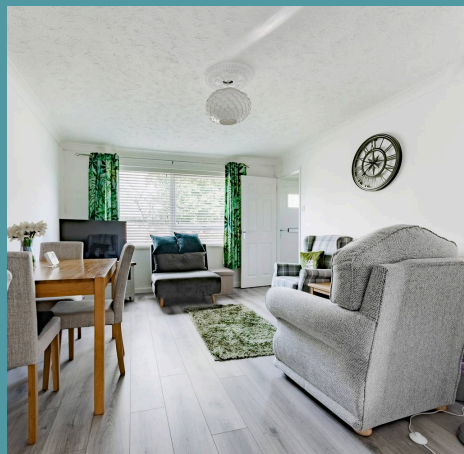
19 Dell Court Dell Road

Lowestoft

Welcome to this charming one-bedroom terraced bungalow in the coastal town of Lowestoft. Showcasing a modern interior, that is presented in excellent condition, offering a comfortable and inviting living space. Including a comfortable sitting/dining room, a kitchen, a double bedroom and a shower room. Externally, you will find a well-kept shared garden and one allocated off-road parking space.

Location

This home is located on the most easterly point of the British Isles, in the traditional seaside town of Lowestoft. This wonderful seaside destination is steeped in history and offers a delightful blend of coastal allure and urban convenience. With its Blue Flag award-winning sandy beaches, Victorian seafront gardens and two charming piers, residents are treated to strolls along the shore and tranquil moments amidst nature's beauty. There are a number of schools in the area to suit all ages, a range of amenities including a Post Office, Bus Station and Train Station, which both run regular services to Norwich and plenty of shopping facilities and restaurants.





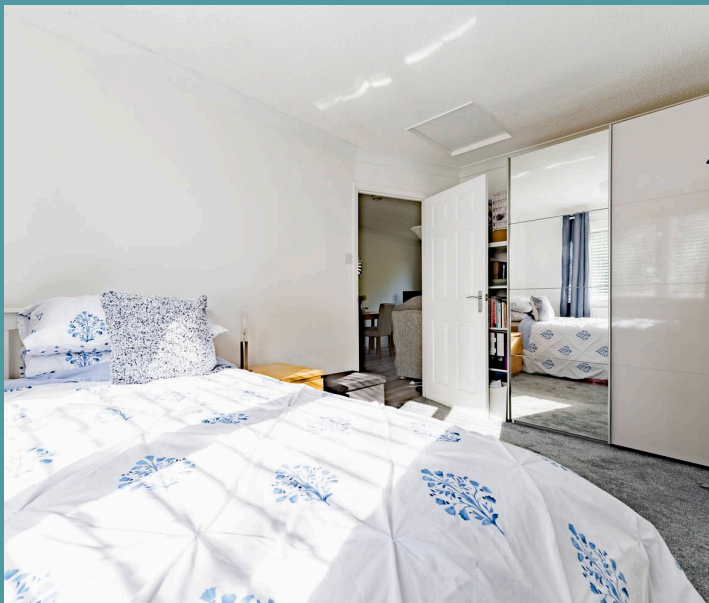
19 Dell Court Dell Road

Lowestoft

Upon entering, you are greeted by a spacious sitting/dining room, ideal for relaxation and entertaining guests. The neutral decor complements the abundance of natural light that floods the room, creating a warm and welcoming atmosphere. This main living area provides ample space for both lounging and dining, accommodating various furniture configurations to suit your lifestyle. The kitchen, adjacent to the living area, is equipped with modern fixtures and fittings, providing a functional space for meal preparation. Including sleek wall and base units, integrated appliances and storage space.

The property features a double bedroom, thoughtfully designed to offer the utmost comfort and privacy. Completing the accommodation is a shower room, comprising of a three piece suite, including a hand basin, a toilet and a shower cubicle.

The shared garden is well-kept, with a laid to lawn and a small patio for seating arrangements. The property benefits from an allocated off-road parking space, ensuring convenience and ease.





19 Dell Court Dell Road

Lowestoft

Agents notes

We understand that this property is leasehold, with 138 years left on the lease.

Ground rent - £10 p/a.

Maintenance fee - £1,540 p/a, including building insurance.

Connected to mains water, electricity, gas and drainage.

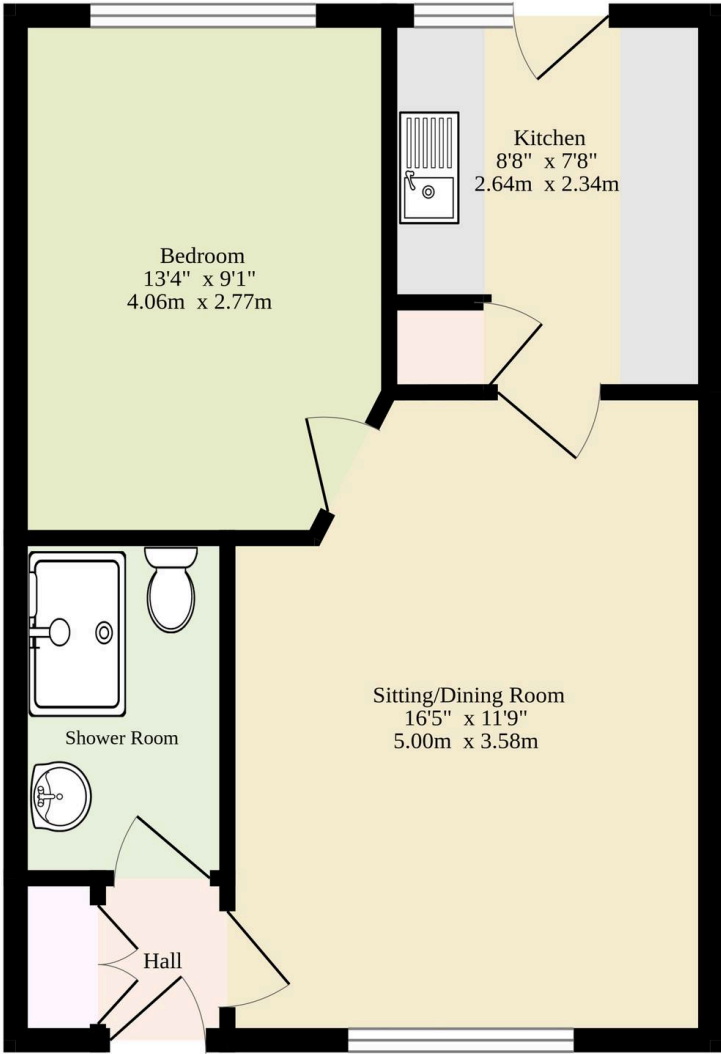
Heating system - Gas central heating.

Council Tax Band: A

- End-terrace bungalow in the coastal town of Lowestoft
- Well-presented with modern interiors, ready for you to move straight into
- Comfortable sitting/dining room, inviting relaxation and entertaining
- Kitchen equipped with modern fixtures and fittings
- Double bedroom and a shower room
- Well-kept garden
- Allocated off-road parking space
- Combi boiler and double glazed windows
- Close to local shops, bus routes, healthcare facilities and the coast



Ground Floor
379 sq.ft. (35.2 sq.m.) approx.



Sqft Does Not Include The Shower Room And The Hall

TOTAL FLOOR AREA : 379 sq.ft. (35.2 sq.m.) approx.

Whilst every attempt has been made to ensure the accuracy of the floorplan contained here, measurements of doors, windows, rooms and any other items are approximate and no responsibility is taken for any error, omission or mis-statement. This plan is for illustrative purposes only and should be used as such by any prospective purchaser. The services, systems and appliances shown have not been tested and no guarantee as to their operability or efficiency can be given.
Made with Metropix ©2025