



15 Cawston Road, Reepham

Guide Price £450,000 - £475,000



# 15 Cawston Road

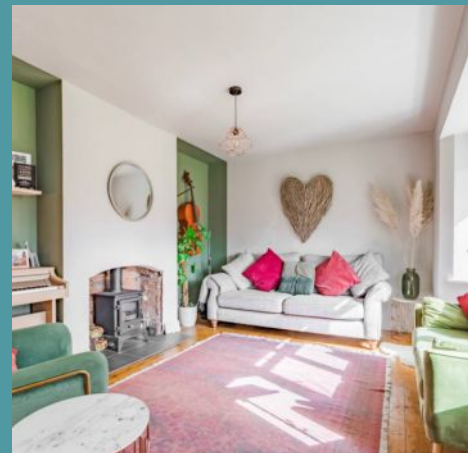
Reepham, Norwich

This stunning three-bedroom detached home gracefully fuses contemporary style with thoughtful design, offering a luxurious living experience in a highly desirable area. With its bespoke handmade kitchen, brushed brass fixtures and inviting living spaces, the property exudes a sophisticated charm throughout. The spacious garden provides a private space perfect for outdoor entertainment, while the home's excellent location ensures easy access to top-rated schools and family-friendly amenities. Generous bedrooms, a recently renovated bathroom, and thoughtful storage solutions further enhance the appeal of this exceptional home. Ideal for modern family living, this property offers the perfect balance.

## The Location

Positioned in the desirable town of Reepham, Cawston Road benefits from a prime location known for its excellent schooling options and well-connected yet community-focused setting. This area is particularly popular with families, offering convenient bus links and a selection of local shops to cater to everyday essentials.

Charming cafés, including The Dial House and The Kings Arms, provide inviting spots to relax, while The Ratcatchers is a renowned choice for exceptional dining. For those with young children, Roarr! Dinosaur Adventure offers a fantastic day out just a short drive away, packed with activities and prehistoric fun. Meanwhile, Norwich Golf Club is perfect for a leisurely round or a delicious Sunday roast. With larger retail destinations also within easy reach.







## 15 Cawston Road

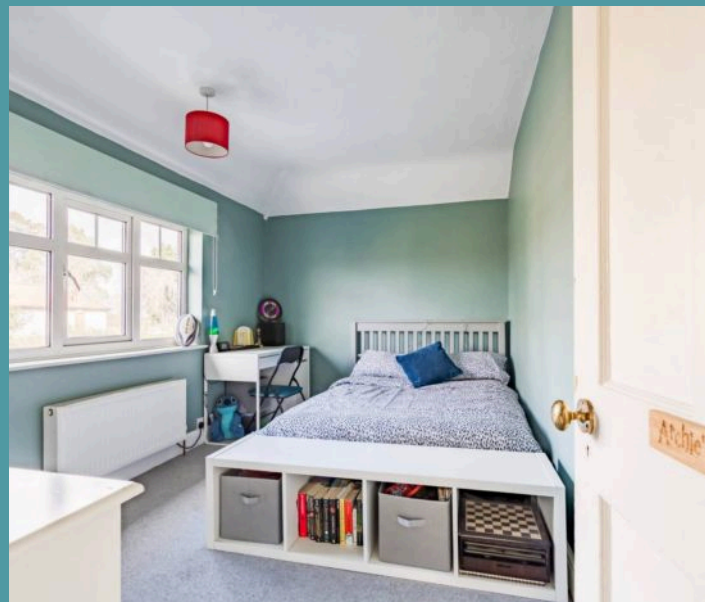
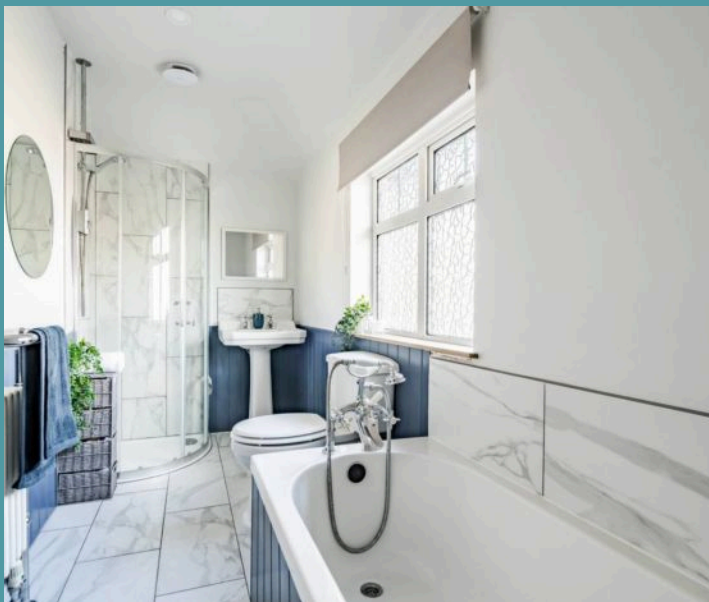
Reepham, Norwich

### Cawston Road

Welcome to this stunning three-bedroom detached home, ideally located in a highly sought-after area renowned for its excellent schooling options and family-friendly atmosphere. As you step into the property, you're immediately greeted by a well-lit entrance hallway, offering the perfect separation before you enter the main living spaces. The layout of the ground floor provides an excellent flow, making it both functional and welcoming for modern family living.

The sitting room features a beautiful focal log burner. Paired with two green-painted alcoves that have been fitted with shelves, the space feels warm and inviting. The large bay window allows an abundance of natural light to flood the room, creating a bright and airy atmosphere. The carefully selected colourful furniture complements the room's character, adding a unique touch.

The star of the home is undoubtedly the kitchen and family living area, which exudes personal charm. The bespoke, handmade kitchen is finished in a rich colour, providing an instant sense of luxury and warmth. The breakfast bar seating area offers a relaxed space for family gatherings, while the brushed brass fixtures elevate the overall feel of the room with a classy, contemporary edge.







## 15 Cawston Road

Reepham, Norwich

Integrated appliances and a well-designed pantry ensure you have all the storage space you need, while the utility cupboard adds extra practicality. Two Velux windows above, combined with two additional windows to the side, as well as bi-fold doors to the back, invite an abundance of light into the room. The herringbone flooring ties the space together, creating an elegant finish to this stunning area of the home. Upstairs, the property offers three large, generously sized bedrooms that provide ample space for relaxation and personalisation. The recently renovated bathroom is equally impressive, featuring a navy colour scheme paired with chrome fixtures. With its four-piece suite, this bathroom offers both style and functionality, providing the perfect space to unwind at the end of the day.

The garden is a real asset to the property, offering a large, private outdoor space that is perfect for both recreation and entertaining. The space includes a well-maintained lawn, a patio area, and is enclosed by mature hedging, providing a sense of seclusion and privacy. The front garden offers ample parking space for your vehicles, with the added bonus of additional scope for even more parking if required. This home truly has it all, combining contemporary design with practical features and an enviable location.

