



4 Astley Terrace, Melton Constable

Offers in Region of £170,000

4 Astley Terrace

Melton Constable, Melton Constable

Astley Terrace in Melton Constable presents a beautifully modernised two-bedroom mid-terraced home, perfect for first-time buyers. Recently renovated to a high standard, the property features a contemporary kitchen, updated shower room, and modern specifications throughout, including oil-fired central heating and double glazing. With a convenient layout, the home offers a welcoming lounge, stylish kitchen, and practical utility room with WC. Both bedrooms are well-sized, with the master boasting a walk-in wardrobe and the second overlooking the peaceful rear garden. The fully enclosed garden and quiet village location make this property an ideal choice for those seeking a comfortable, move-in-ready home with easy access to local amenities.

The Location

Astley Terrace is ideally located in the peaceful village of Melton Constable, offering a rural setting with easy access to nearby amenities. Just a short distance away, the village of Briston provides additional conveniences, including a local shop, post office, primary school, and a popular pub, ensuring that all daily needs are met. The nearby surgery also offers healthcare services, making it a convenient option for residents.

For those who enjoy outdoor pursuits, the surrounding countryside offers scenic walks and nature spots, while still being within easy reach of larger towns for further shopping and leisure options. Melton Constable's position in this peaceful part of Norfolk, combined with its proximity to Briston, makes it an ideal location for those seeking a balance of quiet village life with access to essential services and amenities.





4 Astley Terrace

Melton Constable, Melton Constable

Astley Terrace, Melton Constable

This beautifully modernised 2-bedroom mid-terraced home offers a fantastic opportunity for first-time buyers. Located in a peaceful row of terraces, the property has been recently renovated to a high standard, featuring a contemporary kitchen and shower room.

The home is designed with modern specifications throughout, including oil-fired central heating and double glazing, ensuring comfort and energy efficiency. With no onward chain, this property is ready to move into, making it a perfect choice for those looking to settle in quickly.

The inviting lounge offers a warm and welcoming space, filled with natural light from a front-facing window. With a practical layout, the lounge features laminate flooring, built-in storage, and a radiator for extra warmth.

Adjacent to the lounge is the modern kitchen, designed for both style and functionality. Equipped with sleek work surfaces, wall and base units, and quality appliances, including a built-in dishwasher and fridge-freezer, it's an ideal space for cooking and entertaining. The kitchen is further complemented by a rear-facing window, providing natural light and ventilation.





4 Astley Terrace

Melton Constable, Melton Constable

The home also benefits from a convenient utility room and WC, offering additional space for laundry and storage needs. Both bedrooms are well-proportioned, with the master bedroom featuring a walk-in wardrobe for added convenience.

The second bedroom overlooks the rear garden, making it a peaceful and private space. The shower room, which has been recently updated, includes a shower cubicle, W/C, and wash hand basin, with modern tiling and a double-glazed window.

Outside, the property boasts a fully enclosed rear garden, providing a private outdoor space, perfect for relaxing or entertaining.

Agents Note

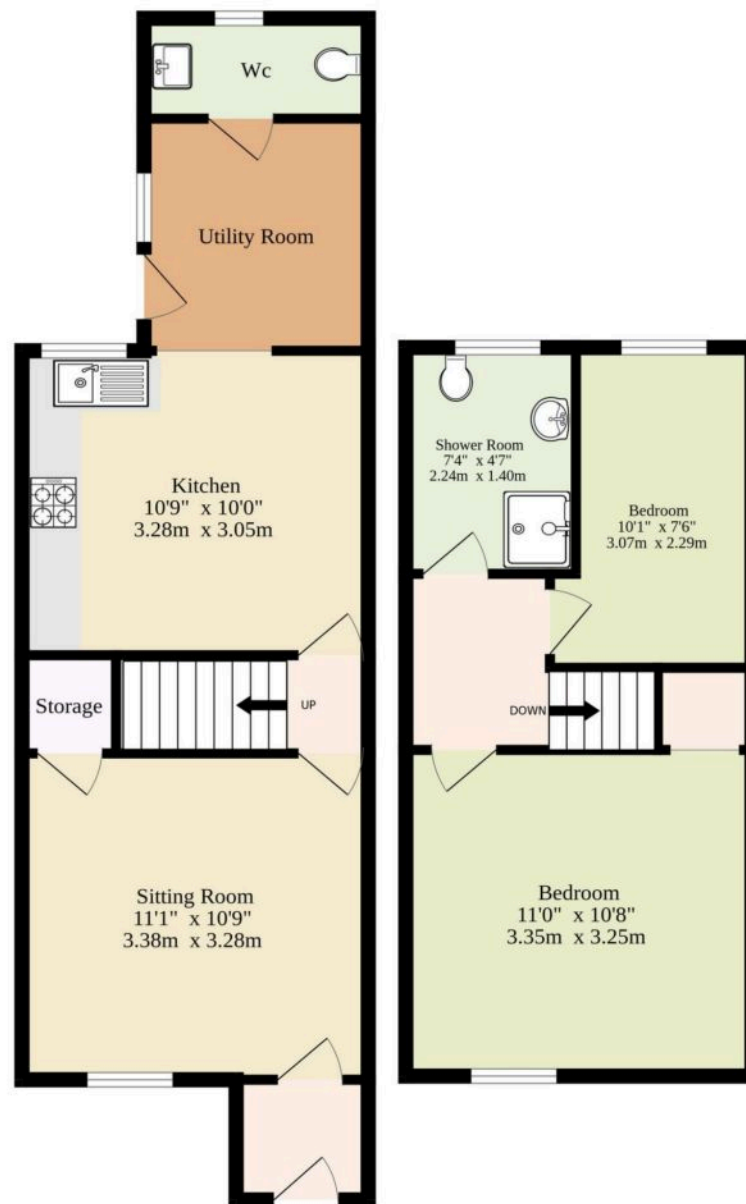
Sold Freehold

Connected to oil-fired heating - alongside mains water, electricity and drainage.



Ground Floor
304 sq.ft. (28.2 sq.m.) approx.

1st Floor
248 sq.ft. (23.0 sq.m.) approx.



TOTAL FLOOR AREA : 552 sq.ft. (51.3 sq.m.) approx.

Whilst every attempt has been made to ensure the accuracy of the floorplan contained here, measurements of doors, windows, rooms and any other items are approximate and no responsibility is taken for any error, omission or mis-statement. This plan is for illustrative purposes only and should be used as such by any prospective purchaser. The services, systems and appliances shown have not been tested and no guarantee as to their operability or efficiency can be given.
Made with Metropix ©2025

