



15 Fir Lane, Lowestoft

Offers in Region of £170,000

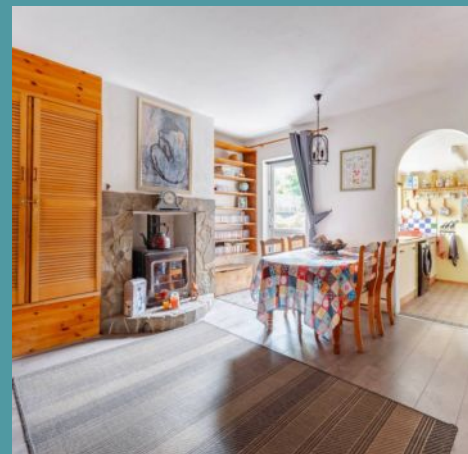
15 Fir Lane

Lowestoft

Introducing this charming end of terrace house in the coastal town of Lowestoft, perfect for both first-time buyers and investors. Highlighting two reception rooms, a fitted kitchen, a ground floor bathroom and three bedrooms. Externally, you will find an extensive garden that is fully enclosed and off-road parking. Don't miss the chance to acquire this home and experience all it has to offer.

Location

This home is located on the most easterly point of the British Isles, in the traditional seaside town of Lowestoft. This wonderful seaside destination is steeped in history and offers a delightful blend of coastal allure and urban convenience. With its Blue Flag award-winning sandy beaches, Victorian seafront gardens and two charming piers, residents are treated to strolls along the shore and tranquil moments amidst nature's beauty. There are a number of schools in the area to suit all ages, a range of amenities including a Post Office, Bus Station and Train Station, which both run regular services to Norwich and plenty of shopping facilities and restaurants.



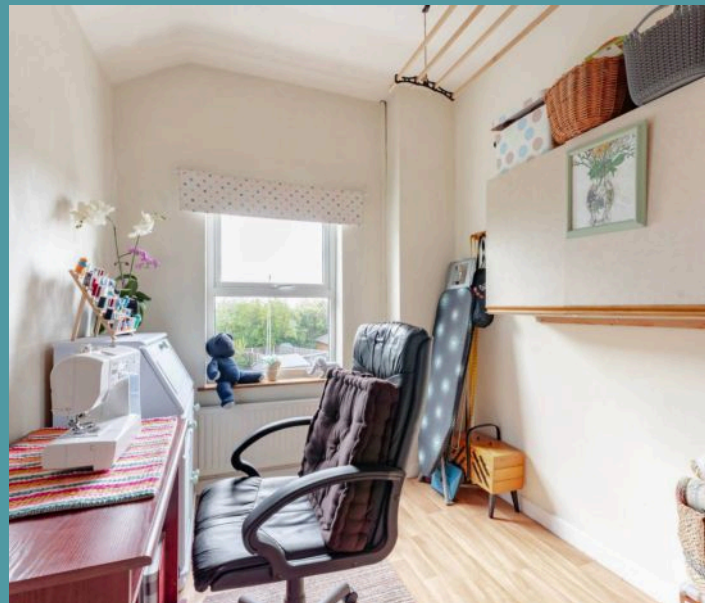
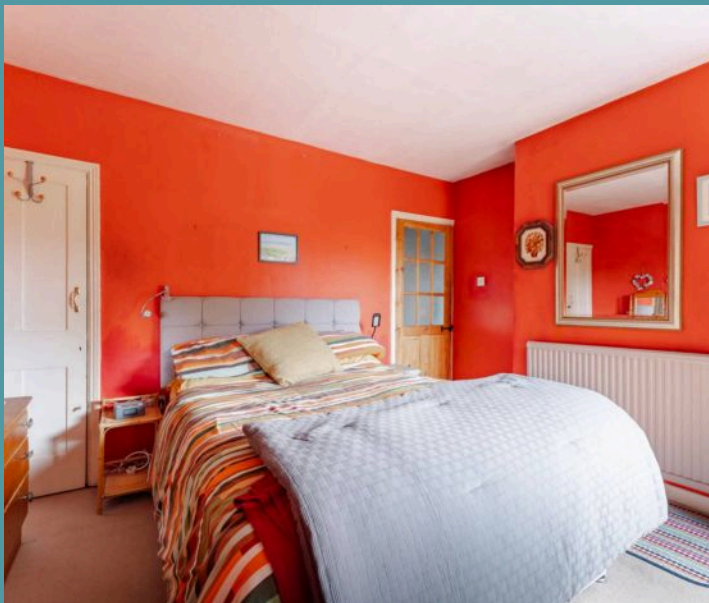


15 Fir Lane

Lowestoft

Upon entering the property, you are greeted by a warm and welcoming ambience that flows throughout the home. The ground floor comprises two generously proportioned reception rooms, providing the perfect setting for relaxation and entertaining guests. The layout allows for versatile use of the space, catering to a variety of lifestyle needs. The fitted kitchen is both stylish and functional, offering ample storage and workspace for cooking your favourite meals. Completing the ground floor is the convenient bathroom, accommodating all residents in the household.

Ascending to the first floor, you will find three well-appointed bedrooms, each thoughtfully designed to offer relaxation and privacy. The third bedroom has the versatility to be a home office, dressing room or a playroom, depending on your own requirements.



Step outside into the extensive south/east facing garden, offering endless possibilities for outdoor enjoyment, whether it be gardening, al fresco dining, or simply unwinding in the fresh air. Complemented by storage sheds for your garden equipment and tools. It is fully enclosed for privacy and seclusion. Off-road parking is available at the rear of the property.



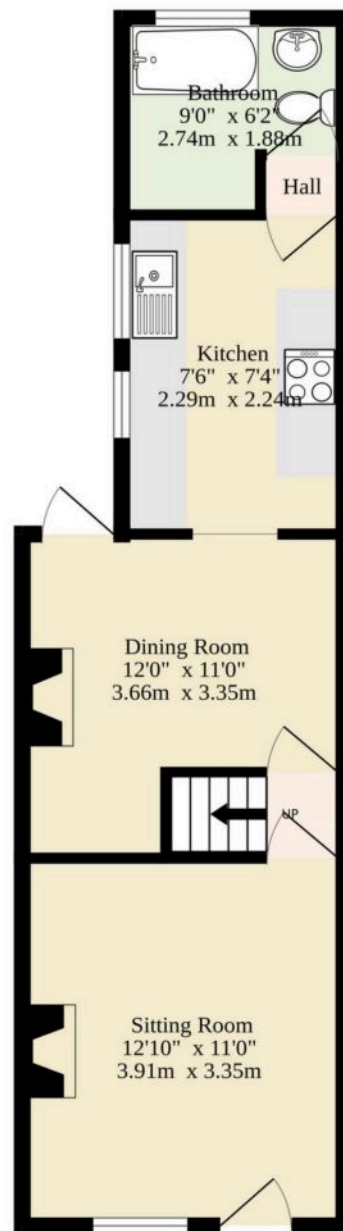
15 Fir Lane

Lowestoft

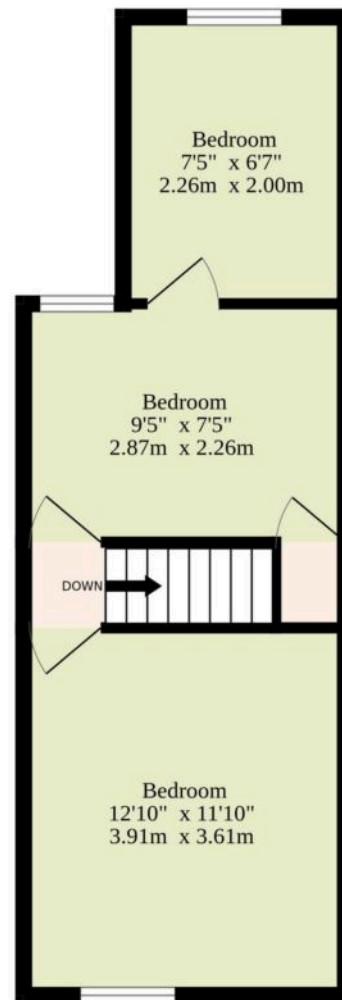
- End of terrace residence in the coastal town of Lowestoft
- Perfect first home or investment purchase
- Two reception rooms inviting relaxation and entertaining
- Fitted kitchen
- Ground floor bathroom
- Three bedrooms
- Extensive south/east facing garden that is fully enclosed for privacy
- Off-road parking available
- Close to local shops, schools, transport links and healthcare facilities



Ground Floor
389 sq.ft. (36.1 sq.m.) approx.



1st Floor
270 sq.ft. (25.1 sq.m.) approx.



TOTAL FLOOR AREA : 659 sq.ft. (61.2 sq.m.) approx.

Whilst every attempt has been made to ensure the accuracy of the floorplan contained here, measurements of doors, windows, rooms and any other items are approximate and no responsibility is taken for any error, omission or mis-statement. This plan is for illustrative purposes only and should be used as such by any prospective purchaser. The services, systems and appliances shown have not been tested and no guarantee as to their operability or efficiency can be given.
Made with Metropix ©2025