



## Crest-O-Cliff, Mill Lane, Bacton

Guide Price £300,000



# Crest-O-Cliff, Mill Lane

Bacton, Norwich

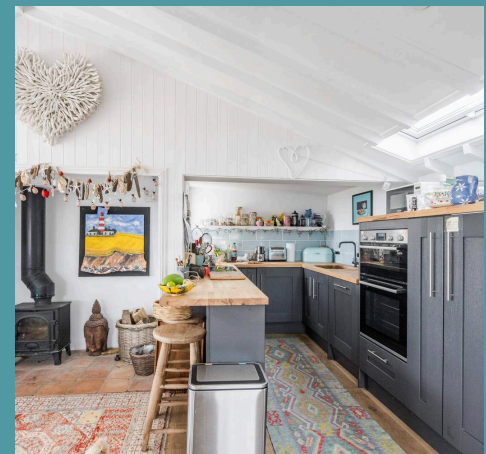
Guide Price £300,000 - £325,000. From the very first glance, this seaside home might keep its best secrets hidden—but step inside, and you're in for a striking transformation. Inside, the home unfolds with striking personality and thoughtful design, from the mosaic-floored hallways to the sunlit, open-plan living space that invites the outdoors in. Each room has been crafted with its own coastal charm, whether it's the vaulted beamwork, clever built-in storage or the dreamy main bedroom that opens directly onto the deck. The heart of the home—a stylish U-shaped kitchen—pairs dark cabinetry with warm wooden surfaces, creating a space that's as functional as it is beautiful. The garden here is the beach—step off the decking and your toes are already sinking into soft sand, with only the dunes between you and the sea. Altogether, this is a place where every corner offers comfort, light, and just the right touch of seaside magic.

Council Tax band: A

Tenure: Freehold

EPC Energy Efficiency Rating: D

EPC Environmental Impact Rating: E







## Crest-O-Cliff, Mill Lane

Bacton, Norwich

Guide Price £300,000 - £325,000. From the very first glance, this seaside home might keep its best secrets hidden—but step inside, and you're in for a striking transformation. Inside, the home unfolds with striking personality and thoughtful design, from the mosaic-floored hallways to the sunlit, open-plan living space that invites the outdoors in. Each room has been crafted with its own coastal charm, whether it's the vaulted beamwork, clever built-in storage or the dreamy main bedroom that opens directly onto the deck. The heart of the home—a stylish U-shaped kitchen—pairs dark cabinetry with warm wooden surfaces, creating a space that's as functional as it is beautiful. The garden here is the beach—step off the decking and your toes are already sinking into soft sand, with only the dunes between you and the sea. Altogether, this is a place where every corner offers comfort, light, and just the right touch of seaside magic.

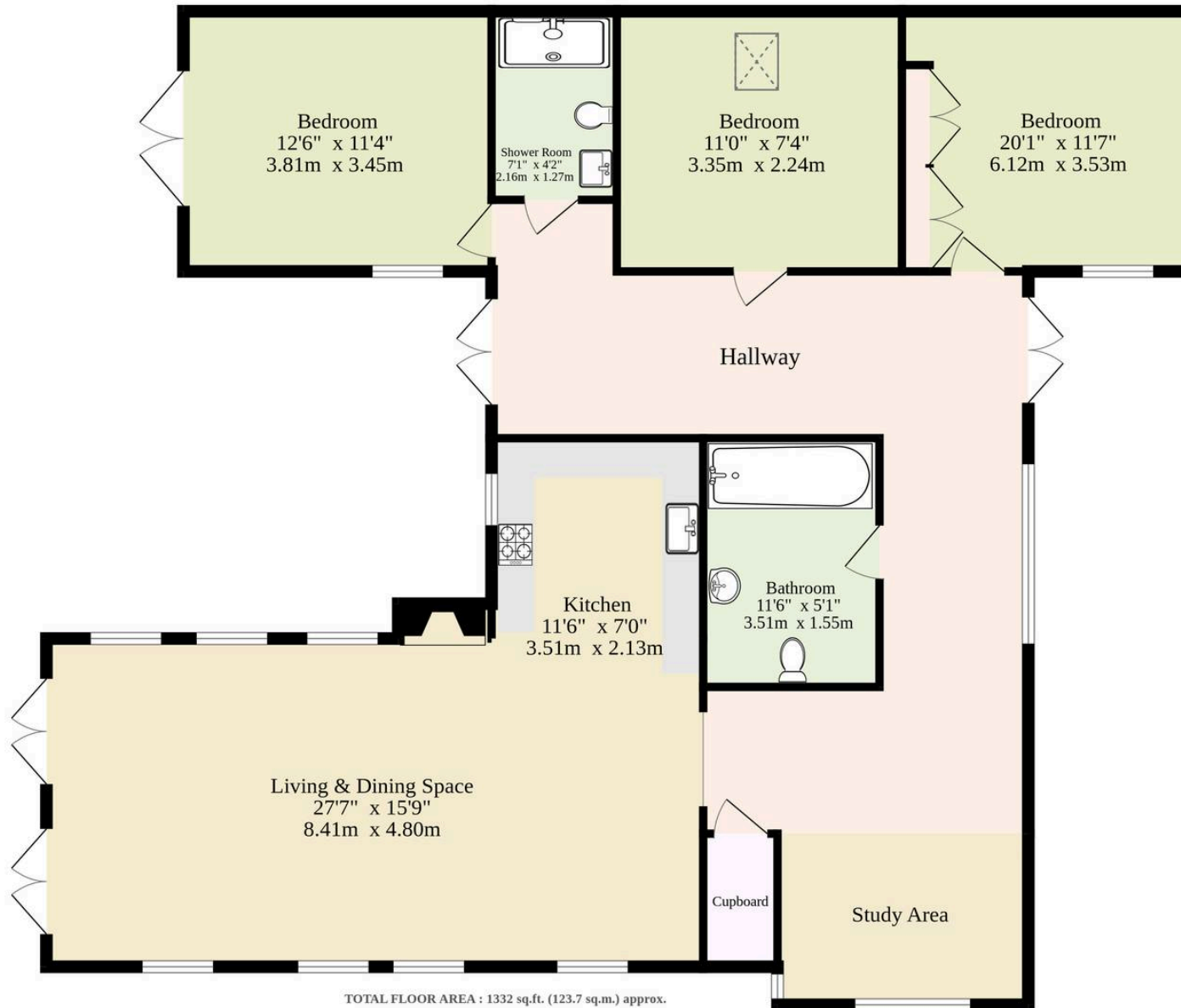
### The Location

Mill Lane in Bacton delivers the true essence of coastal living—where the sea is your nearest neighbour and the horizon stretches endlessly. Just moments from the shoreline, this laid-back location promises daily strolls on the sand, the soothing soundtrack of the waves and skies that put on a show with every sunrise and sunset.

Bacton itself offers a charming mix of essentials—a friendly local shop, a cosy café and a pub to wind down in after salty-aired adventures. For a broader range of amenities, North Walsham is just a short drive away. Whether you're in the mood for exploring the wild beauty of the Norfolk Broads,



**Ground Floor**  
**1332 sq.ft. (123.7 sq.m.) approx.**



TOTAL FLOOR AREA : 1332 sq.ft. (123.7 sq.m.) approx.

Whilst every attempt has been made to ensure the accuracy of the floorplan contained here, measurements of doors, windows, rooms and any other items are approximate and no responsibility is taken for any error, omission or mis-statement. This plan is for illustrative purposes only and should be used as such by any prospective purchaser. The services, systems and appliances shown have not been tested and no guarantee as to their operability or efficiency can be given.  
Made with Metropix ©2025

