



10 Mill Lane, Horsford

Guide Price £500,000

10 Mill Lane

Horsford, Norwich

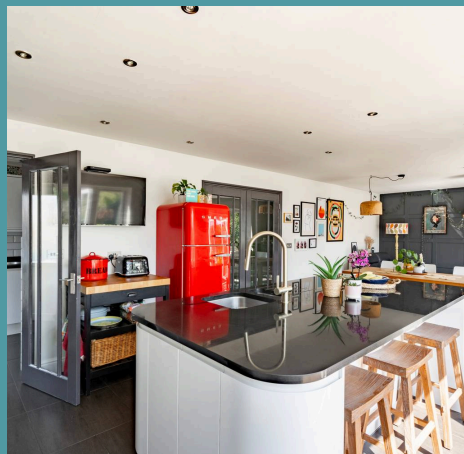
Guide Price £500,000 - £525,000. The vendor's influence has truly brought this home to life, transforming it into a beautifully designed and deceptively spacious detached chalet bungalow. Every corner of the property has been thoughtfully considered, creating an inviting and versatile space that effortlessly caters to modern family living. The open-plan kitchen and dining area, with its striking kitchen island and warm wood burner, is an exceptional space for both everyday living and entertaining, flowing naturally into the sun-soaked, south-facing garden. Five generous double bedrooms, including a master suite with a walk-in wardrobe and en-suite, provide the perfect space for family members, while the well-maintained garden offers a private setting. With a large driveway, garage, and practical living spaces, this home is a true testament to contemporary design.

Council Tax band: C

Tenure: Freehold

EPC Energy Efficiency Rating: D

EPC Environmental Impact Rating:





10 Mill Lane

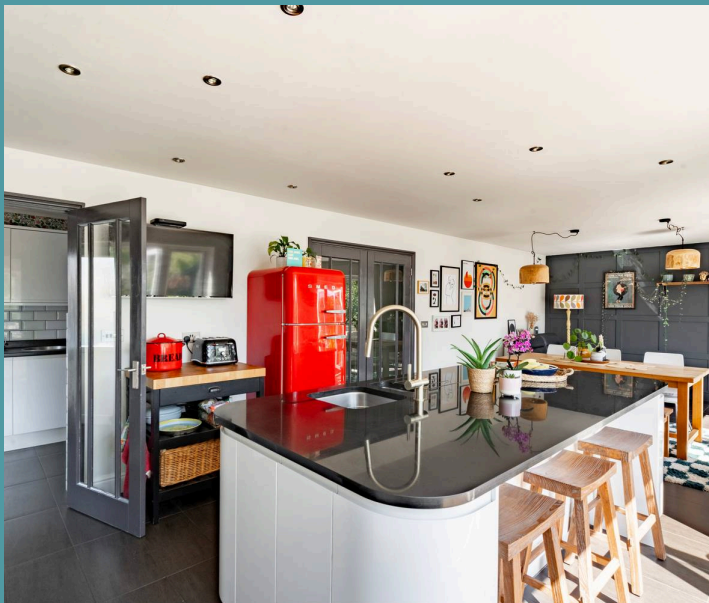
Horsford, Norwich

Guide Price £500,000 - £525,000. The vendor's influence has truly brought this home to life, transforming it into a beautifully designed and deceptively spacious detached chalet bungalow. Every corner of the property has been thoughtfully considered, creating an inviting and versatile space that effortlessly caters to modern family living. The open-plan kitchen and dining area, with its striking kitchen island and warm wood burner, is an exceptional space for both everyday living and entertaining, flowing naturally into the sun-soaked, south-facing garden. Five generous double bedrooms, including a master suite with a walk-in wardrobe and en-suite, provide the perfect space for family members, while the well-maintained garden offers a private setting. With a large driveway, garage, and practical living spaces, this home is a true testament to contemporary design.

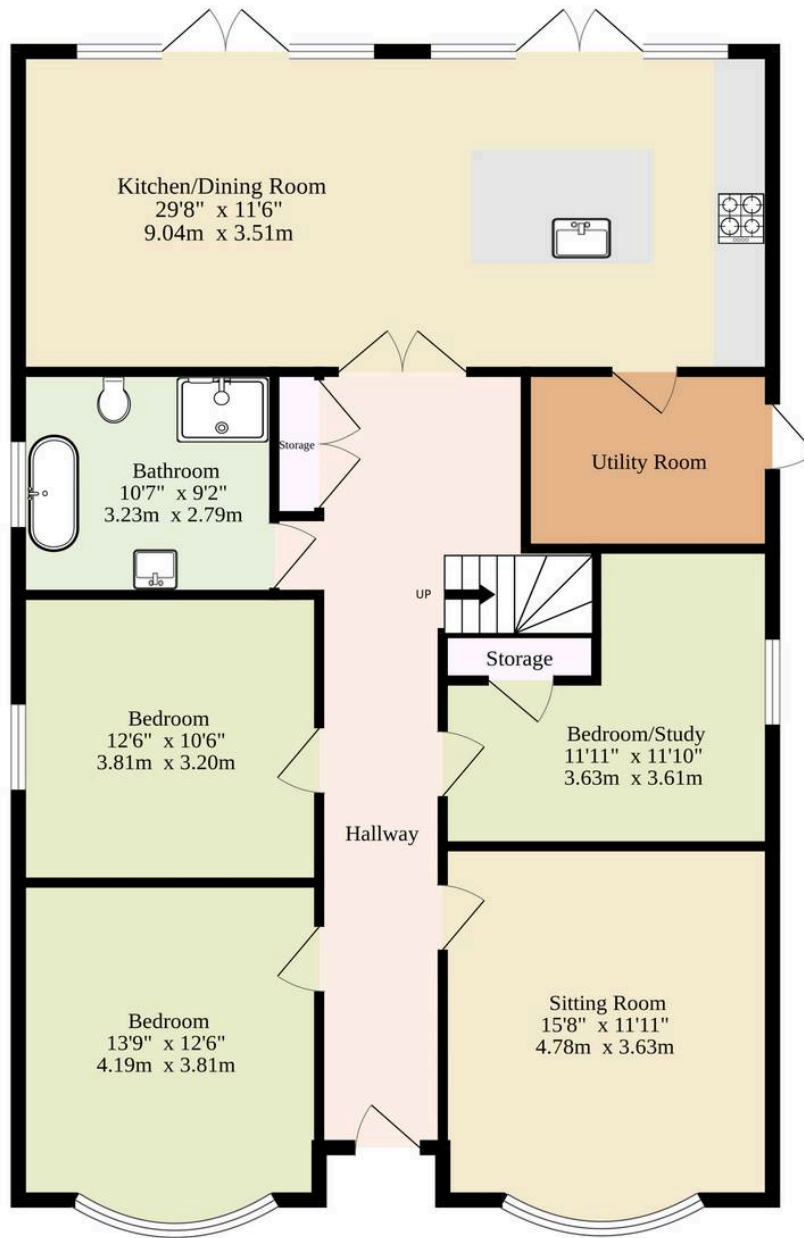
The Location

Mill Lane is set in the thriving village of Horsford, offering a fantastic mix of convenience and rural charm. The village is home to a medical centre, pharmacy, dental practice, veterinary facility, supermarket with a post office, traditional bakers and butchers, as well as hairdressers and barbers. Residents can enjoy a range of dining options, from a pub serving street food to a fish and chip shop, Chinese takeaway, kebab shop, and an Indian restaurant.

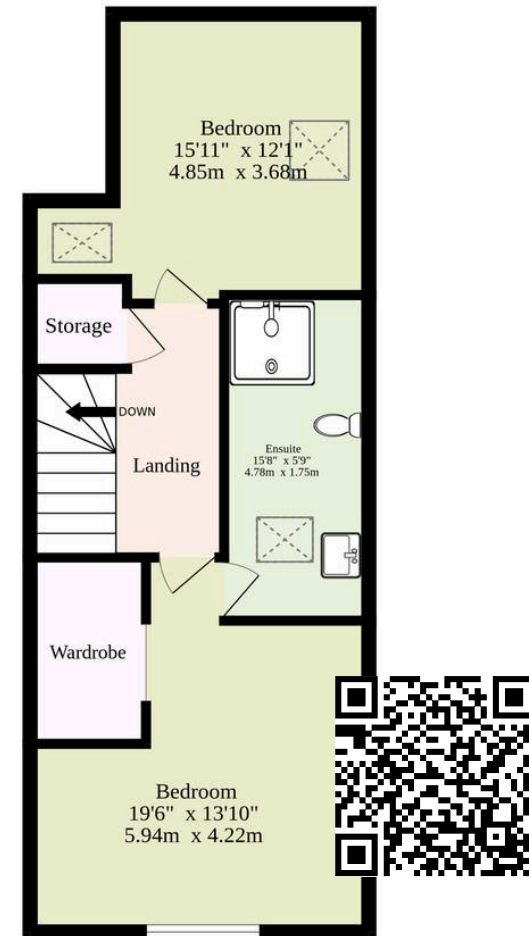
With additional retail units under development, Horsford continues to grow while maintaining a strong sense of community. Sports enthusiasts can take advantage of the local football club, Norfolk



Ground Floor
1418 sq.ft. (131.7 sq.m.) approx.



1st Floor
556 sq.ft. (51.7 sq.m.) approx.



TOTAL FLOOR AREA : 1974 sq.ft. (183.4 sq.m.) approx.

Whilst every attempt has been made to ensure the accuracy of the floorplan contained here, measurements of doors, windows, rooms and any other items are approximate and no responsibility is taken for any error, omission or mis-statement. This plan is for illustrative purposes only and should be used as such by any prospective purchaser. The services, systems and appliances shown have not been tested and no guarantee as to their operability or efficiency can be given.

Made with Metropix ©2025