



207 Clapham Road North, Lowestoft

Offers Over £135,000

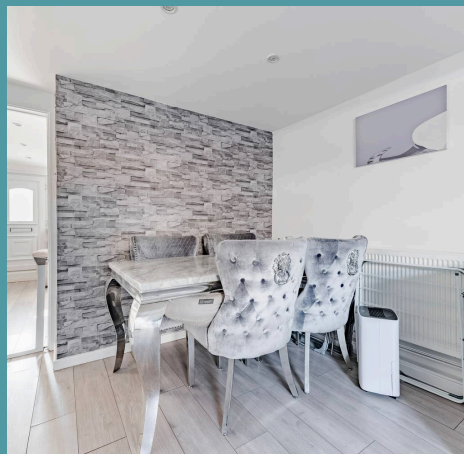
207 Clapham Road North

Lowestoft

Introducing this fully renovated mid-terraced house in the coastal town of Lowestoft. Its contemporary and comfortable design is perfectly suited for first-time buyers or investors. Highlighting a light-filled living room, an open-plan kitchen/dining room with modern fixtures and fittings, a newly-installed bathroom and two double bedrooms. Externally, you will find a low maintenance courtyard and the potential for off-road parking (stp). Acquire this home today to experience a lifestyle of comfort and ease, moments away from a wide range of amenities.

Location

This home is located on the most easterly point of the British Isles, in the traditional seaside town of Lowestoft. This wonderful seaside destination is steeped in history and offers a delightful blend of coastal allure and urban convenience. With its Blue Flag award-winning sandy beaches, Victorian seafront gardens and two charming piers, residents are treated to strolls along the shore and tranquil moments amidst nature's beauty. There are a number of schools in the area to suit all ages, a range of amenities including a Post Office, Bus Station and Train Station, which both run regular services to Norwich and plenty of shopping facilities and restaurants.





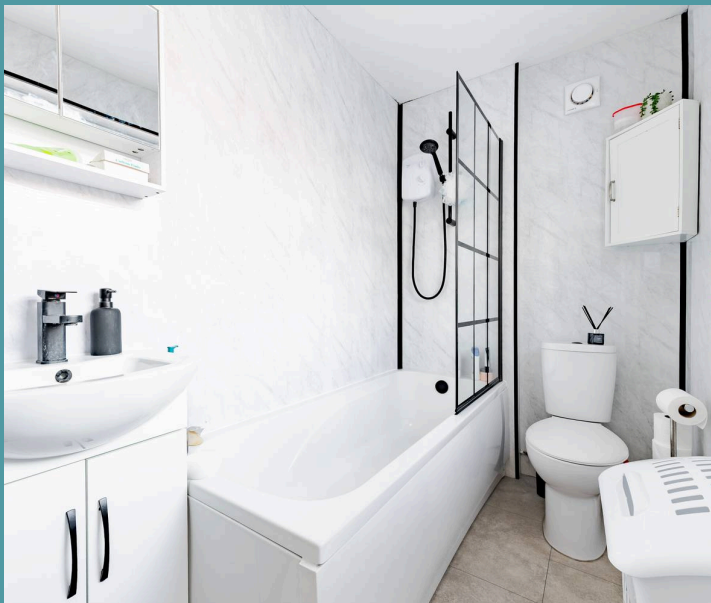
207 Clapham Road North

Lowestoft

Upon entering, you are greeted by a light-filled living room, providing the perfect space for relaxation and entertaining. The neutral colour palette and stylish decor make this room both inviting and versatile, catering to a variety of interior design preferences. Continuing through to the open-plan kitchen/dining room, residents will appreciate the seamless integration of modern fixtures and fittings, enhancing the cooking experience and creating a welcoming ambience for intimate family meals or socialising with loved ones. Completing the ground floor accommodation is a well-appointed shower room, comprising of a newly installed three-piece suite.

Ascending the stairs to the first floor, two generously proportioned double bedrooms await, each thoughtfully designed to offer the utmost comfort and privacy. The second bedroom can be versatile, with the option to be a home office, dressing room or guest room.

Externally, you will find a low maintenance courtyard and the potential for off-road parking at the front of the residence (stp).





207 Clapham Road North

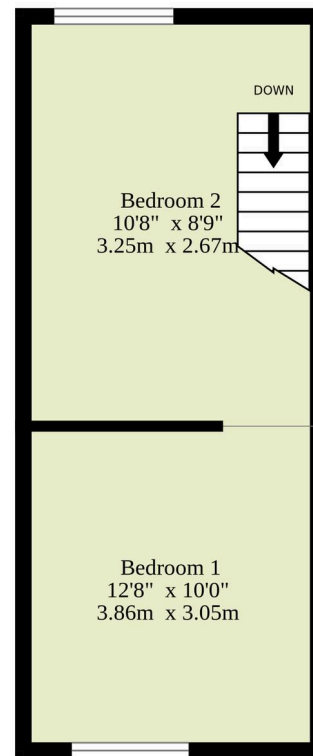
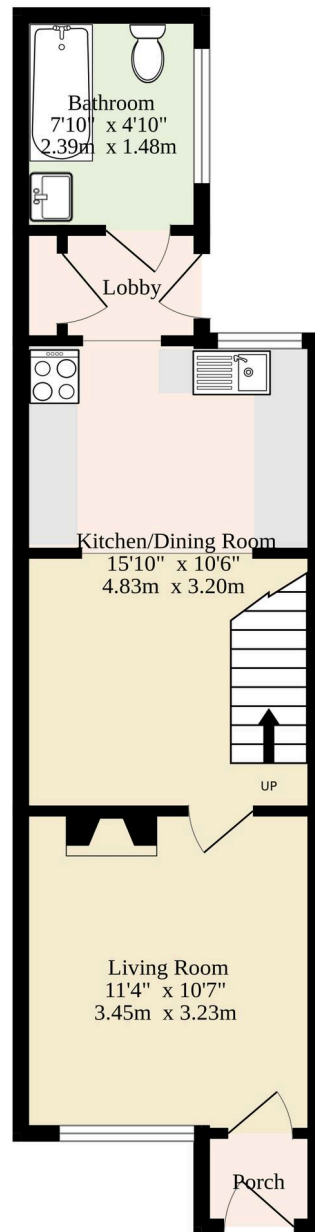
Lowestoft

- Mid-terrace residence in the coastal town of Lowestoft
- Perfect first home or investment purchase
- Fully renovated throughout with a contemporary design
- Light-filled sitting room inviting relaxation and entertaining
- Open-plan kitchen/dining room with modern fixtures and fittings
- Ground floor shower room with a newly installed three-piece suite
- Two double bedrooms
- Low maintenance courtyard and the potential for off-road parking (stp)
- Within walking distance to the town centre and the coast
- Close to local shops, schools, a bus station, a train station and healthcare facilities



Ground Floor
324 sq.ft. (30.1 sq.m.) approx.

1st Floor
220 sq.ft. (20.4 sq.m.) approx.



TOTAL FLOOR AREA : 544 sq.ft. (50.5 sq.m.) approx.

Whilst every attempt has been made to ensure the accuracy of the floorplan contained here, measurements of doors, windows, rooms and any other items are approximate and no responsibility is taken for any error, omission or mis-statement. This plan is for illustrative purposes only and should be used as such by any prospective purchaser. The services, systems and appliances shown have not been tested and no guarantee as to their operability or efficiency can be given.
Made with Metropix ©2025