



35 Pakefield Street, Lowestoft

Guide Price £230,000 - £250,000

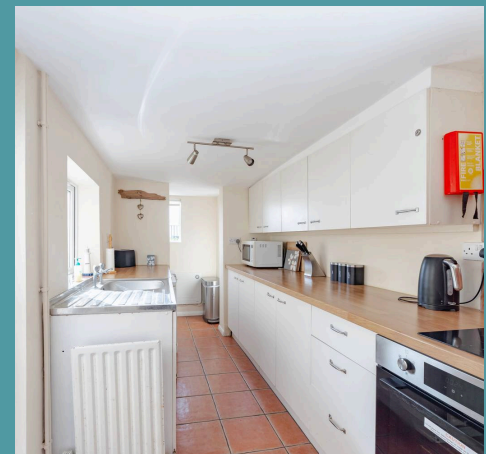
35 Pakefield Street

Lowestoft

Moments away from the scenic coastline with direct sea views, lies this mid-terrace residence that is currently a successful holiday let, with the potential to be a beautiful first home. Showcasing two inviting reception rooms, a modern kitchen, two double bedrooms, a bathroom, a WC and a low-maintenance courtyard. Don't miss the chance to make this remarkable property yours and experience the best of coastal living in the heart of Pakefield.

Location

This property is situated in Pakefield, in the seaside town of Lowestoft. This wonderful seaside destination is steeped in history and offers a delightful blend of coastal allure and urban convenience. With its Blue Flag award-winning sandy beaches, Victorian seafront gardens and two charming piers, residents are treated to strolls along the shore and tranquil moments amidst nature's beauty. There are several schools in the area to suit all ages, a range of amenities including a Post Office, Bus Station and Train Station, which both run regular services to Norwich and plenty of shopping facilities and restaurants.





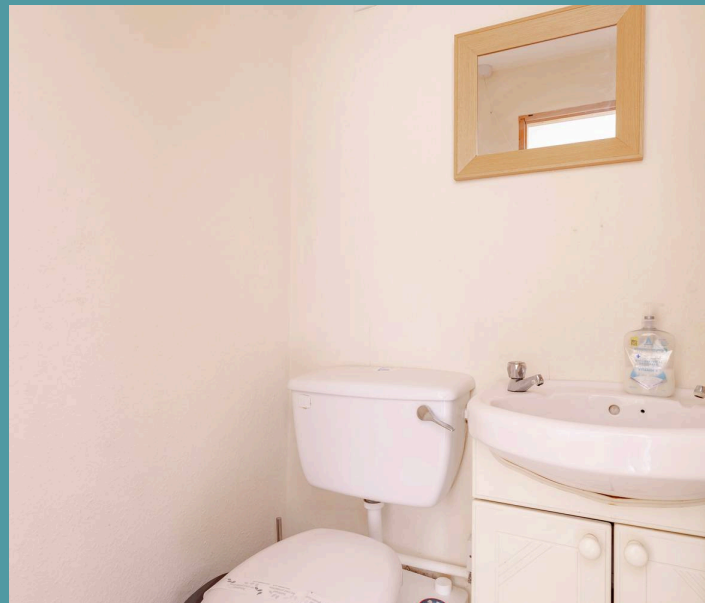
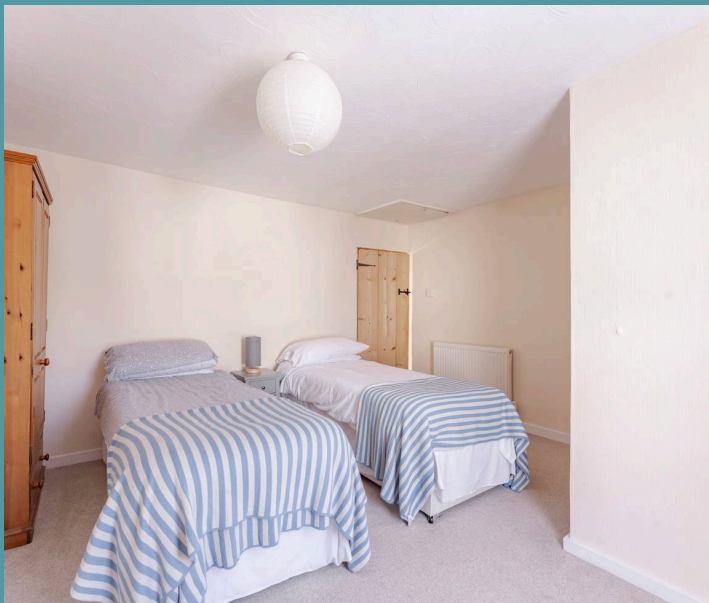
35 Pakefield Street

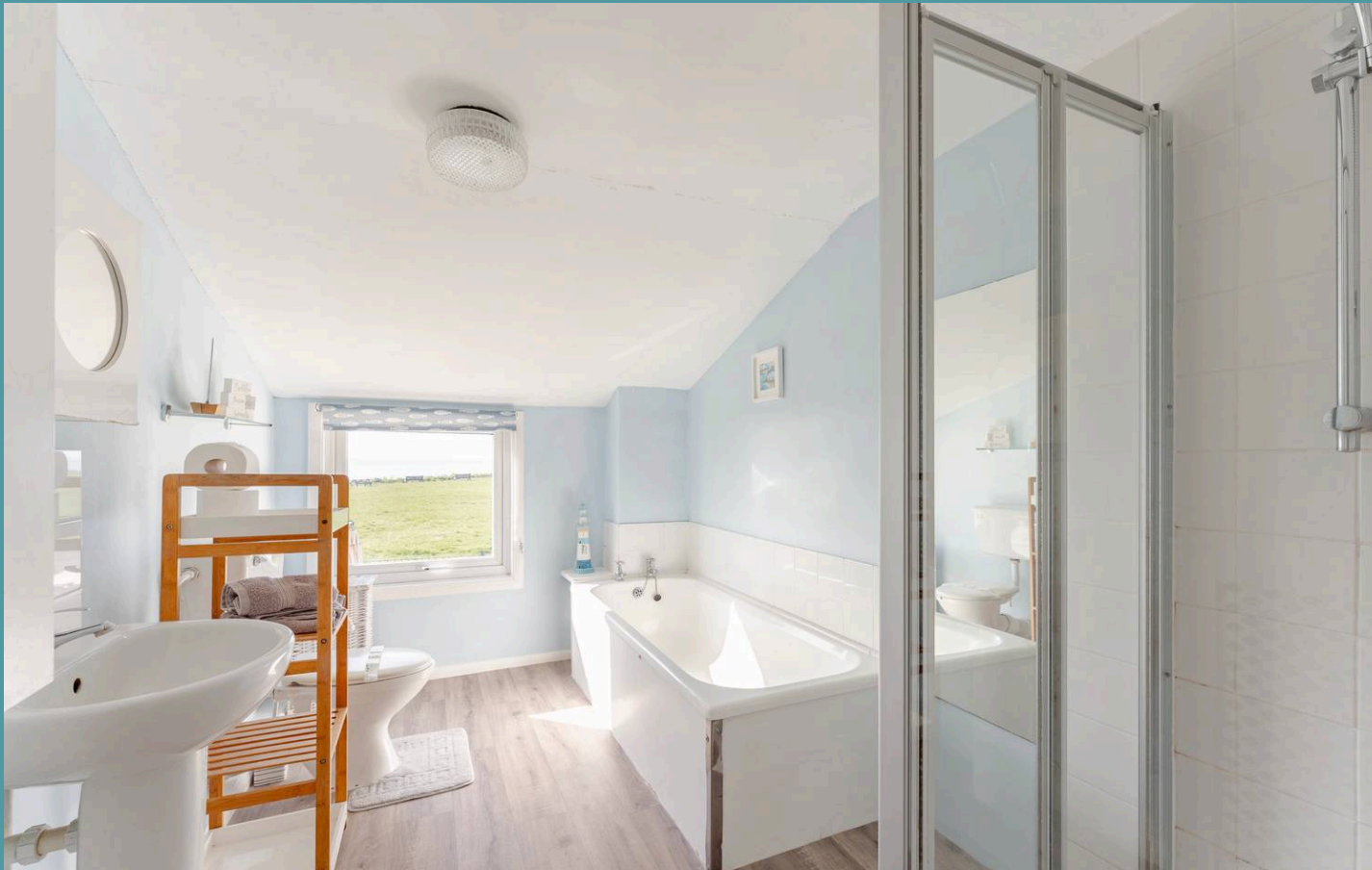
Lowestoft

Upon entering, one is greeted by a sense of warmth and comfort that pervades throughout the home. The ground floor features two inviting reception rooms, with one showcasing a charming wood burner that not only adds a touch of cosiness but also creates an ideal setting for relaxation and intimate gatherings. The kitchen is equipped with modern fixtures and fittings, including wall and base units, appliances and storage, to be able to cook your favourite meals.

Ascending the stairs, you will encounter two double bedrooms, each thoughtfully designed to offer relaxation and privacy. One bedroom is complemented by a WC and a storage cupboard, whilst the other bedroom has access into the bathroom, comprising of a four piece suite, with a window framing views of the scenic coast.

Outside, a low-maintenance courtyard awaits, offering a private space where residents can enjoy alfresco dining or simply relax in the serenity of their surroundings, overlooking an open field and the sea.





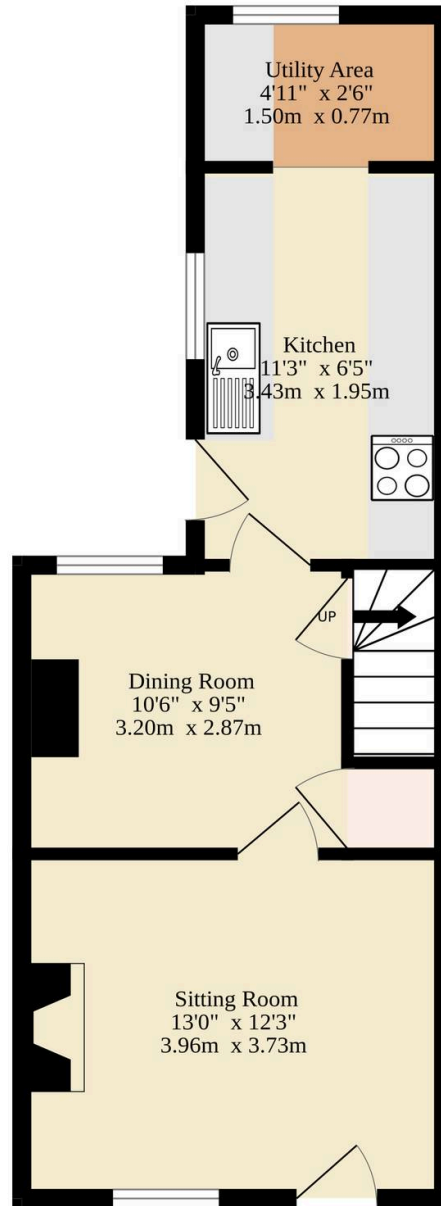
35 Pakefield Street

Lowestoft

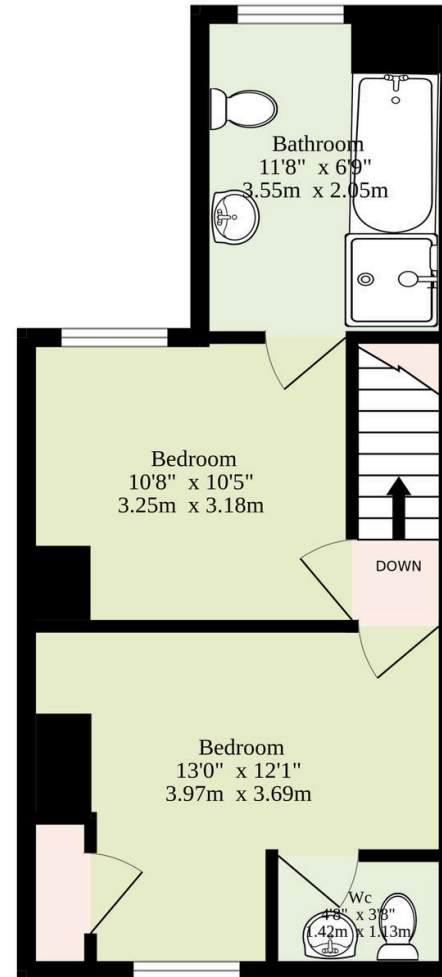
- Mid-terrace residence in the sought-after area of Pakefield
- Moments away from the coast with direct sea views
- A successful holiday let, with the option to be a first home
- Available fully furnished
- Two reception rooms, one accentuated by a wood burner, inviting relaxation and entertaining
- Kitchen equipped with modern fixtures and fittings
- Two double bedrooms, a WC and a bathroom
- Low maintenance courtyard suitable for your outdoor seating arrangements
- Close to local shops, transport links, healthcare facilities and scenic walks



Ground Floor
341 sq.ft. (31.7 sq.m.) approx.



1st Floor
364 sq.ft. (33.8 sq.m.) approx.



TOTAL FLOOR AREA : 705 sq.ft. (65.5 sq.m.) approx.

Whilst every attempt has been made to ensure the accuracy of the floorplan contained here, measurements of doors, windows, rooms and any other items are approximate and no responsibility is taken for any error, omission or mis-statement. This plan is for illustrative purposes only and should be used as such by any prospective purchaser. The services, systems and appliances shown have not been tested and no guarantee as to their operability or efficiency can be given.
Made with Metropix ©2025